

## Community Engagement Charter released for consultation

The Community Engagement Charter changes the way that local and state governments are required to consult with the community during the preparation of changes to planning strategies and policies (such as rezonings).

Rather than legislative one-size-fits-all approach the Charter requires those consulting to tailor the engagement to suit the project and the communities who are interested and may be impacted by the proposed change(s).

It recognises that with technological advances there are many options to successfully consult with communities.

Local and state governments and other bodies consulting on planning matters will be required to meet the following principles in undertaking engagement:

- 01 Engagement is genuine
- 02 Engagement is inclusive and respectful
- 03 Engagement is fit for purpose
- 04 Engagement is informed and transparent
- 05 Engagement is reviewed and improved

The Planning Commission is responsible for ensuring that the engagement undertaken meets the principles of the Charter.

Those engaging will also be required to measure the success of their engagement to ensure that engagement practices continue to improve.

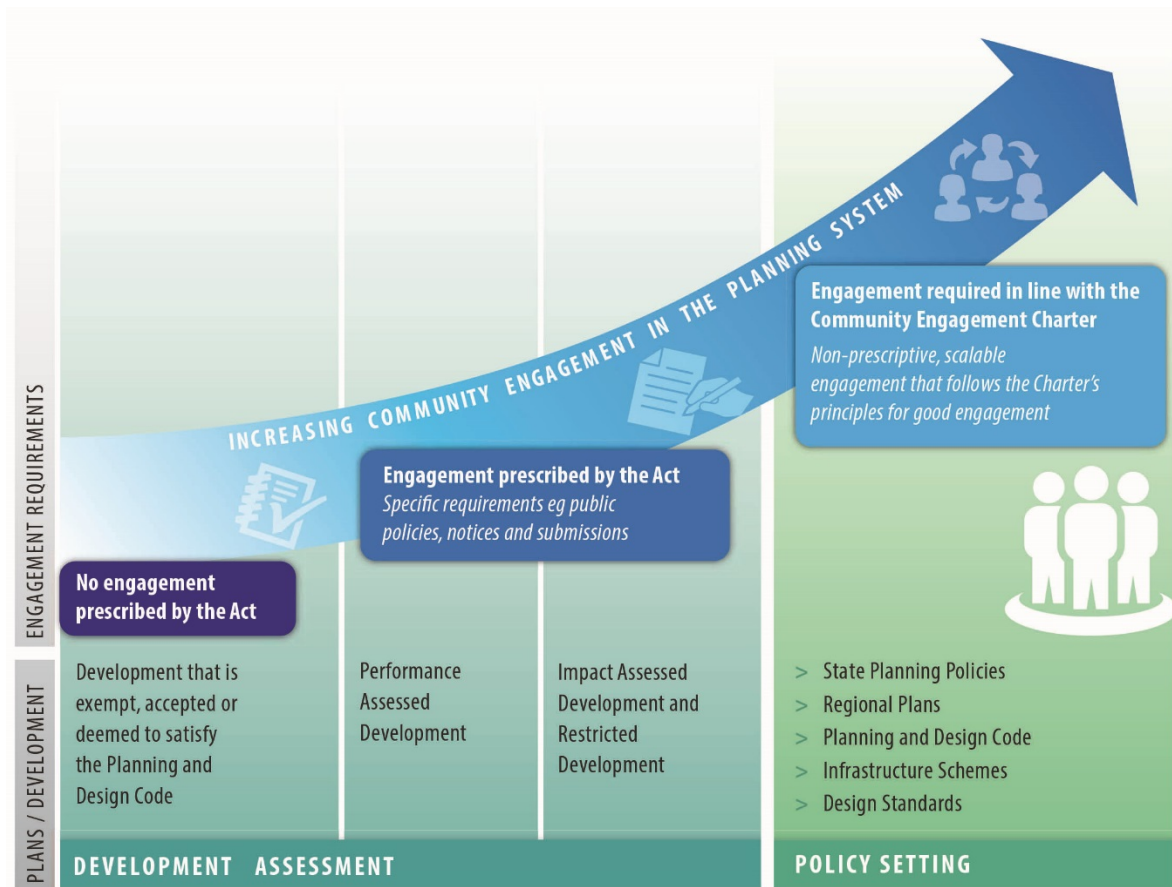


### What it will mean for the community

When a rezoning proposal, new planning policies or spatial directions may change the type of developments in an area that may affect you, you should expect:

- To become aware of the opportunities to provide your feedback about the proposals etc.
- That there will be different opportunities and methods to get involved.
- That the extent of your involvement in the engagement process will depend on the significance of the change and the likely impact.
- That there will be greater opportunity to be involved in the earlier stages of projects.
- Information will be relevant and easy to understand.
- The outcomes of the consultation process and reasons for the decision will be clear.
- To understand the policy framework in your area and how your area may change in the future.

Development Assessment is not covered by the Charter, however the new legislation includes clear processes for public notification.



### COMMUNITY ENGAGEMENT IN THE PLANNING SYSTEM

(As required by the Planning, Development and Infrastructure Act, 2016)

### Submissions on the draft Charter and Guide may be made as follows:

- By:** 8 December 2017
- Email to:** [DPTI.PlanningEngagement@sa.gov.au](mailto:DPTI.PlanningEngagement@sa.gov.au)
- Comment on:** [www.saplanningportal.sa.gov.au](http://www.saplanningportal.sa.gov.au)
- On line survey:** [www.saplanningportal.sa.gov.au](http://www.saplanningportal.sa.gov.au)
- Mail to:** The State Planning Commission  
GPO Box 1815, Adelaide, SA, 5001