

# Historical thematic frameworks and local heritage

Duncan Marshall

2016

# Overview

- Key messages
- Introduction
- The broader context – Australian heritage conservation practice
- What are historical themes?
- Historical themes as an important tool in the identification of local heritage places

# Key messages

Historic thematic frameworks can be a powerful tool in the best-practice identification of local heritage places in South Australia:

- they provide a vital structured approach to local heritage survey work
- based on a good understanding of local history and tailored to the specific locality, these frameworks can guide both the survey work itself as well as inform the assessment of values of individual places as well as groups of places from surveys

# Key messages

- they can help with understanding the specific history of places in a wider context, relating that specific history to broader historical themes in the local area, including whether such themes are more or less important, with many or few places related to the theme, and provide clues to the relative importance of specific places
- they provide a safety net to ensure consideration of important themes which are not always obvious amongst the readily-found and most obvious population of heritage places

# RENEWING OUR PLANNING SYSTEM

Placing Local Heritage on Renewed Foundations

## Heritage reform – an exploration of the opportunities

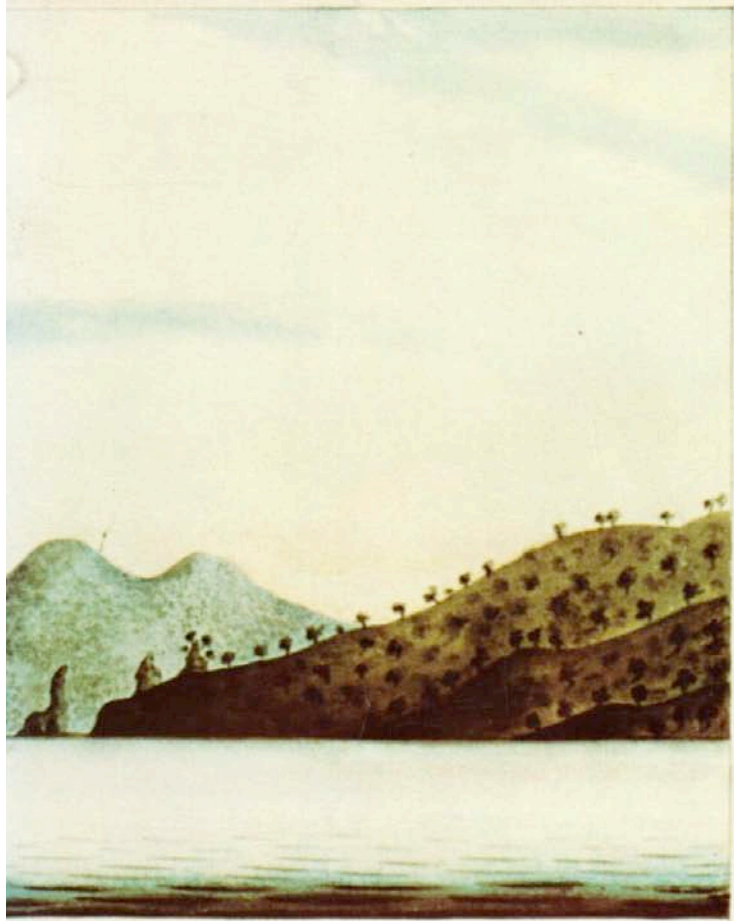
### Local Heritage Discussion Paper

The State Government is committed to improving the ways we recognise and manage local heritage places in South Australia.

This discussion paper has been prepared to encourage high-level ideas and feedback from experts and practitioners involved in local heritage practice in this state. Responses will inform planning policies in this specialised area, including the creation of a new Bill.



REPORT  
OF THE  
NATIONAL  
ESTATE



TER. BAY. a. 176. 3. dis.

# THE BURRA CHARTER

The Australia ICOMOS Charter for  
Places of Cultural Significance 2013



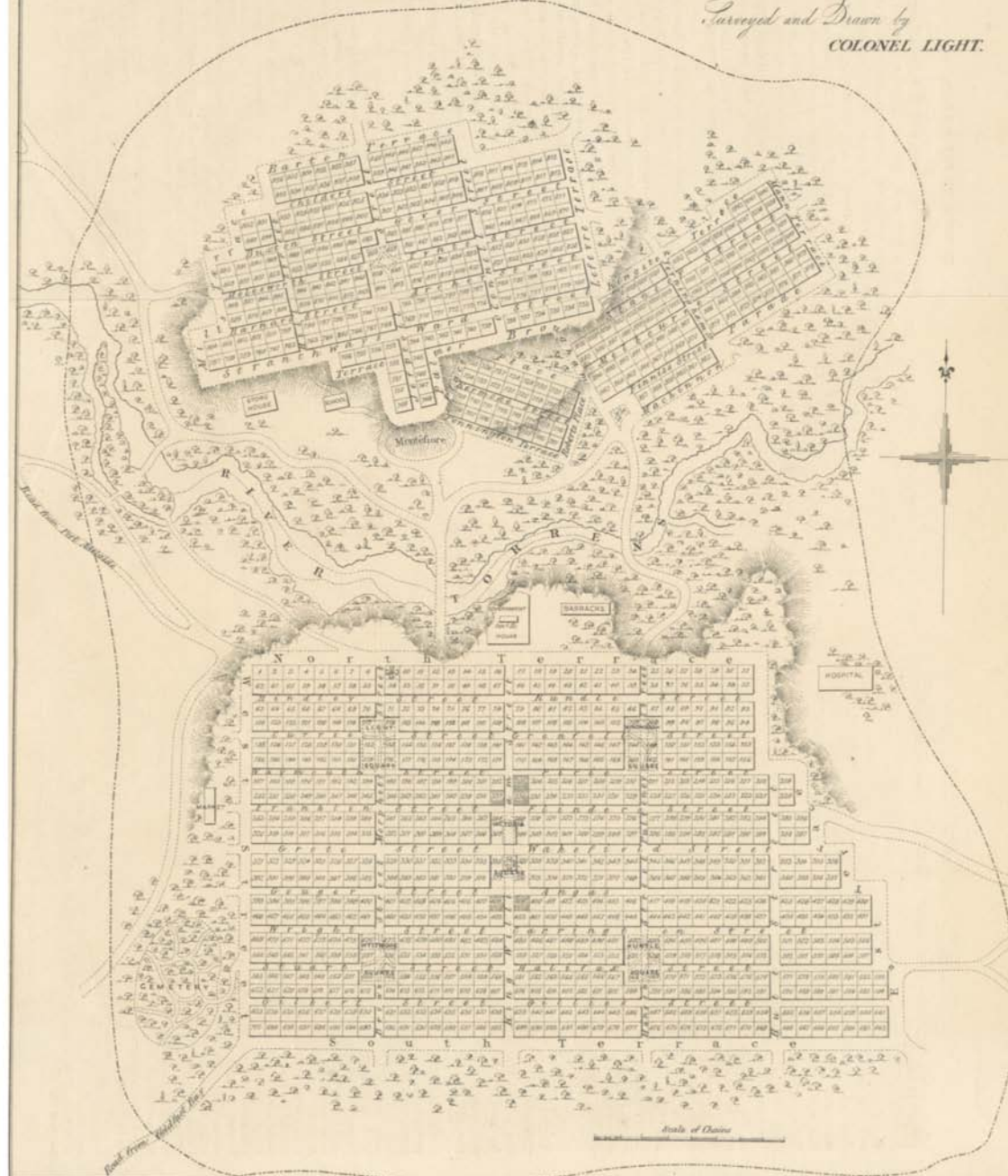
Australia ICOMOS Incorporated  
International Council on Monuments and Sites



# PLAN OF THE CITY OF ADELAIDE,

With the Acre Allotments numbered.

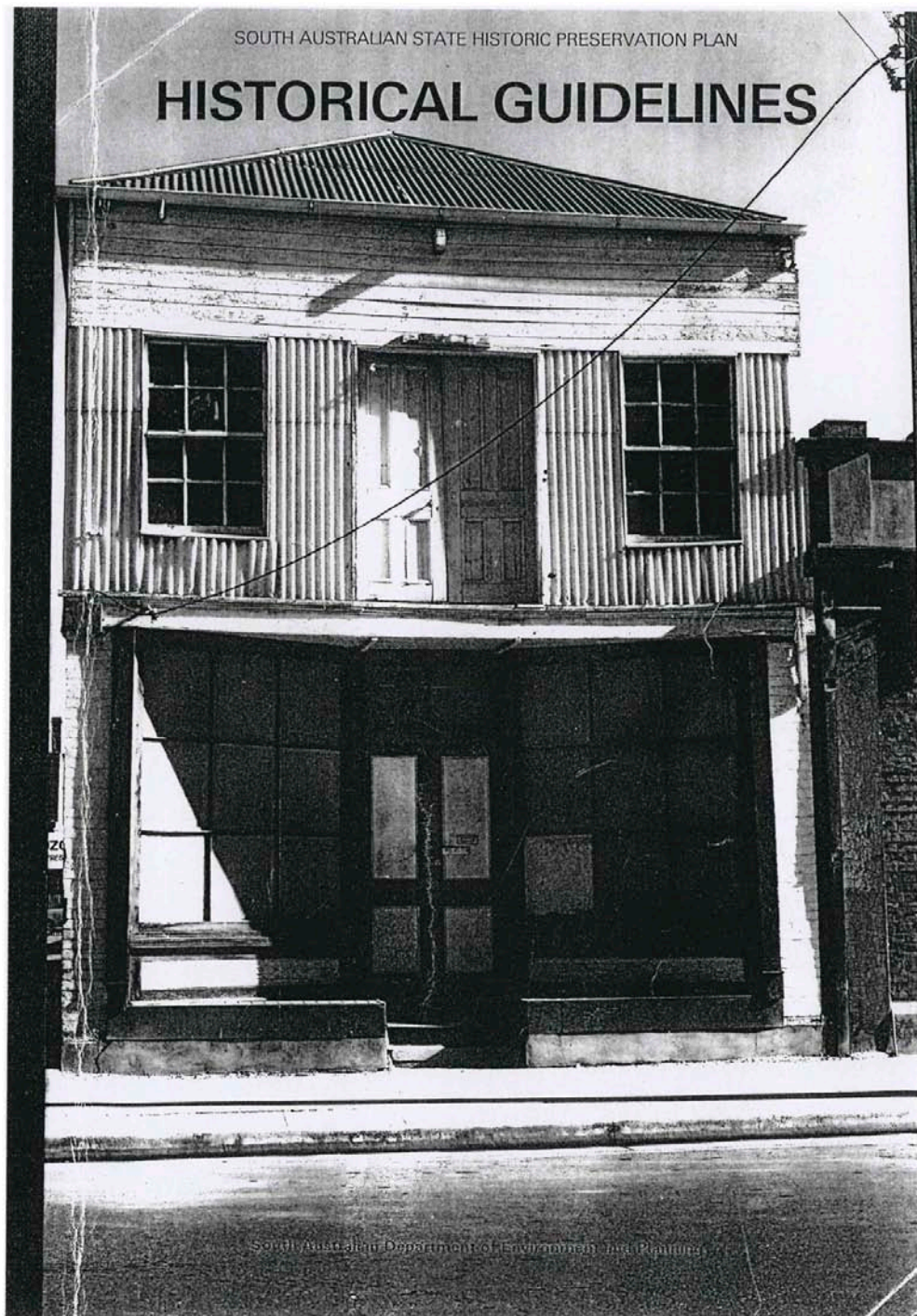
*Surveyed and Drawn by*  
COLONEL LIGHT.





SOUTH AUSTRALIAN STATE HISTORIC PRESERVATION PLAN

# HISTORICAL GUIDELINES



South Australian Department of Environment and Planning

# Burra Charter

Cultural significance definition...

- aesthetic, historic, scientific, social or spiritual value for past, present or future generations (Australia ICOMOS 2013, Article 1.2)



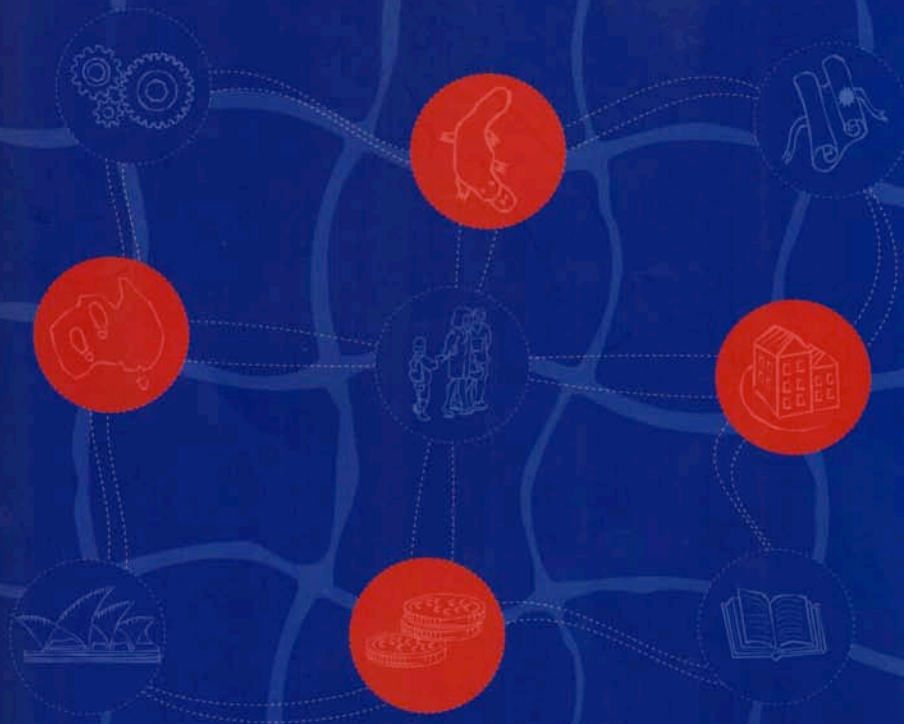
# Victoria's Framework of Historical Themes



# AUSTRALIAN HISTORIC THEMES

A framework for use in heritage assessment and management

AUSTRALIAN HERITAGE COMMISSION



AUSTRALIAN HERITAGE  
COMMISSION



# Australian Historic Themes example

- **Theme group** – Governing
- **Theme** – Defending Australia
- **Sub-themes...**
  - Providing for the common defence
  - Preparing to face invasion
  - Going to war
  - Building fortifications
  - Training



Includes references to Update 1.  
For changes (edits/additional words)  
refer separate document: Update 1  
Addendum March 2009



# Stonnington thematic history

- Provides an explanation of the themes and activities that have been important in shaping the present-day City of Stonnington
- Is not intended as a complete social or political history of the municipality, but rather as a summary of human use and impact upon the landscape
- Not a chronological record



# Stonnington thematic history

- The history is organised according to themes so as to provide a context to assist with the identification of heritage places that illustrate the rich natural and cultural history of the study area



# Stonnington thematic history

- **Pastoralism** – Mansions and houses associated with pastoralists – *Carmyle, Como, Trawalla*
- **Crown land sales** – Malvern Hill Hotel, houses and buildings associated with early crown allotment estates such as *Avoca*, subdivisions such as the *Gascoigne Estate*





'Carmyle' Carmyle Ave

<http://www.baysidebush.org.au/node/1512>

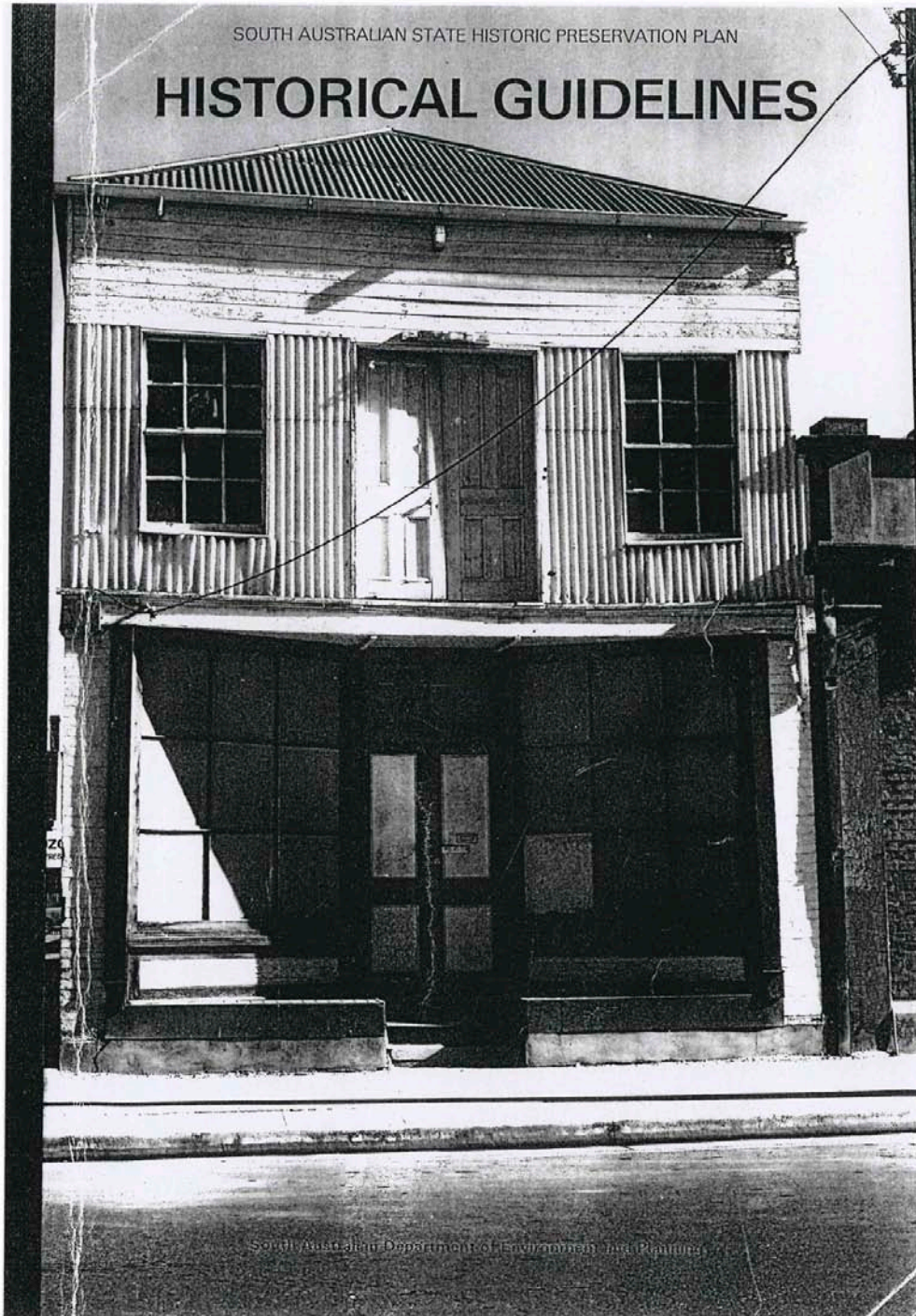
# Stonnington thematic history

The study area is **important within the metropolitan area** for its associations with many of the important early pastoralists who played **an important role in the development of Victoria**. While **many of the mansions and houses associated with pastoralists have been demolished**, those that survive include *Carmyle*, *Como*, and *Trawalla*, which provide **important evidence of the wealth of the pastoralists and their position of influence in society**.



SOUTH AUSTRALIAN STATE HISTORIC PRESERVATION PLAN

# HISTORICAL GUIDELINES



South Australian Department of Environment and Planning

