



4 Walkable neighbourhoods

Increase the percentage of residents living in walkable neighbourhoods in Inner, Middle and Outer Metropolitan** Adelaide by 25% by 2045

A 'walkable neighbourhood' is where the daily needs of most residents can be met within a short trip of where they live or work. It provides close access by foot, bike or public transport - through the provision of well-designed infrastructure - to jobs, shopping, learning, open space, recreation, and other amenities and services.

Walkable neighbourhoods have extensive economic, social, health and environmental benefits.

Higher density is needed to provide economic support to increase and improve local services and infrastructure (e.g. public transport, shops and community infrastructure).

This target will incorporate the following criteria:

1. **Public open space** (greater than 4000m² in size) (400m / 5 min walk)
2. **Primary schools** (1km / 15 mins walk)
3. **Frequent bus services** (including Go Zones) (400m / 5 min walk) **OR**
Train station or tram/o-Bahn stop (800m / 10 min walk)
4. **Shops** (800m / 10 mins walk)

How this target will be measured

Each of the spatial data layers developed for this target is based on the criteria identified. The following maps show areas that currently has access to each individual criteria (open space, primary schools, shops, and high frequency public transport), and the cumulative effect of the four criteria combined. The walking distance from each criteria was measured using network analysis rather than 'as the crow flies'. The higher the rating, the more walkable the neighbourhood. Population data at the ABS mesh block level (approximately 30 to 60 households) was overlaid to estimate the population within each walkability category. The results are shown on Map 17.

A walkable neighbourhood is one where at least 3 out of the 4 criteria are met.

Current status

This is a new target, determined using a multi-criteria GIS analysis.

The baseline for 3 and 4 out of 4 for:

- Inner Metro: 73%

- Middle Metro: 53%
- Outer Metro (in established urban areas): 30%

Consideration is being given to an Outer Metro sub-region target.

A 25% increase by 2045 would result in over 90% of residents living within at least 3 out of 4 criteria in Inner Metro, 66% in Middle Metro and 36% in townships and other established urban areas**.

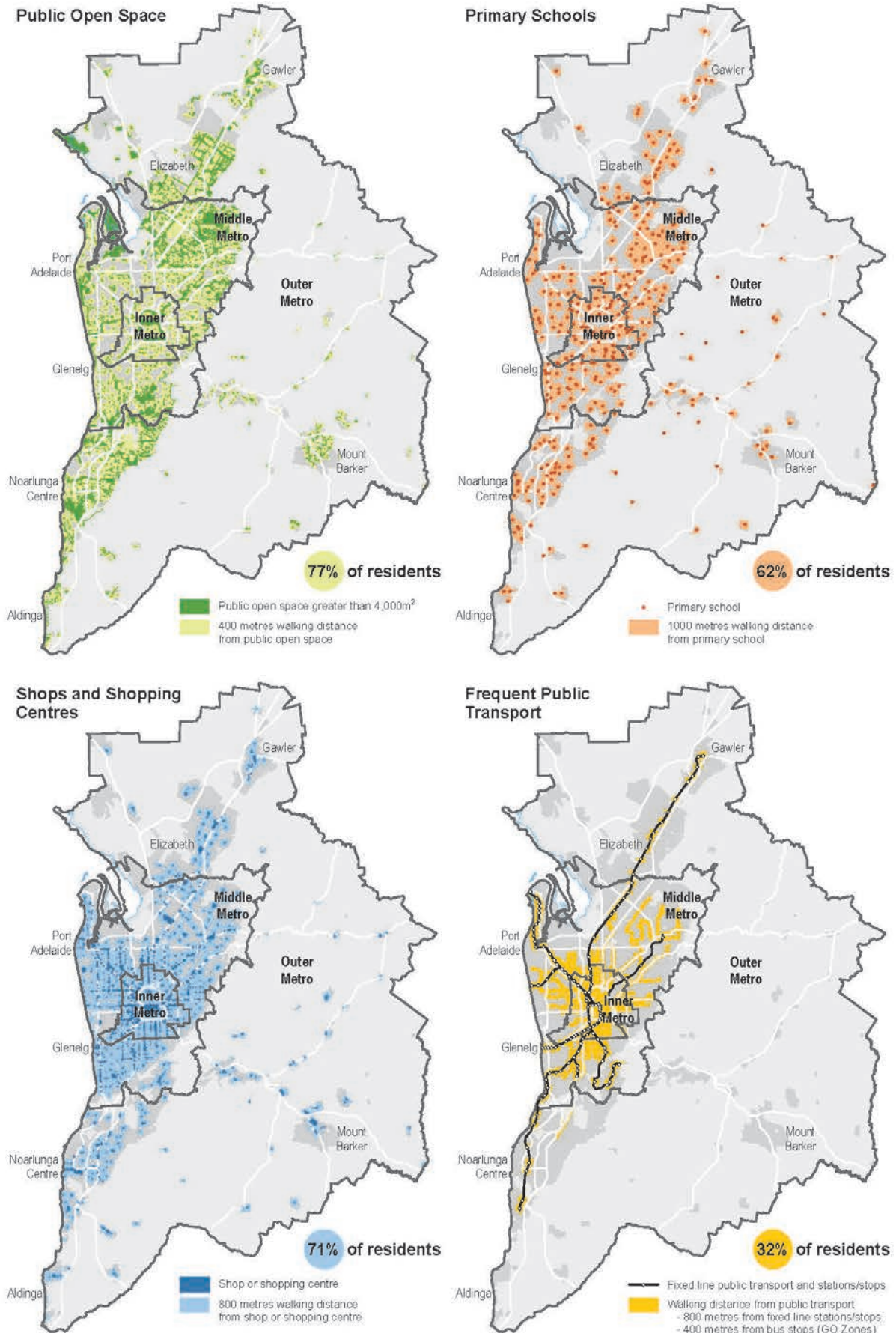
Future investigations

Additional criteria will be investigated such as social infrastructure. Tailored criteria for outer metropolitan Adelaide will also be investigated for possible inclusion.

* Includes playgrounds, parks and shared open spaces.

** Established urban areas, including townships, in Outer Metropolitan Adelaide.

Map 17 — Inner, Middle and Outer Metro areas showing the four walkable neighbourhoods criteria



PLN ID: 5279



Map 18 — Proportion of population within walking distance of services

