

Park Terrace, Robe Terrace, Walkerville Terrace and Mann Road Intersection Upgrade

Dear Resident / Business Owner

The Department of Planning, Transport and Infrastructure (DPTI) is upgrading the intersection of Park Terrace, Robe Terrace, Walkerville Terrace and Mann Road, Gilberton. This State Government funded project will improve traffic flow, decrease traffic delays and reduce the potential for crashes along the Inner Ring Route.

We are writing to provide a project update and to advise of traffic conditions during the Christmas period. Works are approximately 75% complete, and will continue in January and February 2020.

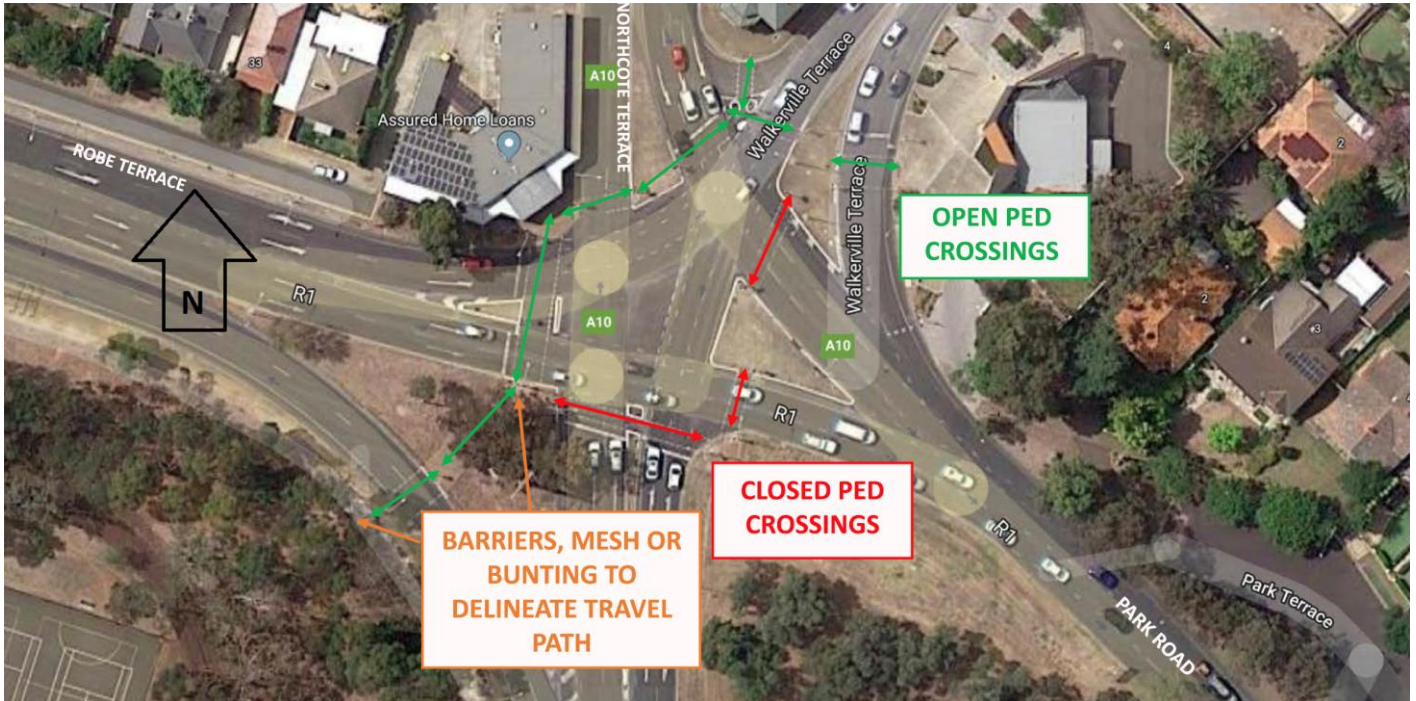
Works will **not** occur on the project from **20 December 2019 to 5 January 2020**. All traffic lanes will remain open with a 40 km/h speed restriction in place.

Works in the New Year will include:

- Excavation and paving on the south west and south east corners.
- Installation of light poles.
- Reinstatement of pedestrian crossings.
- Traffic signal works.
- Kerbing, asphalt, and line marking.
- Landscaping.

Some pedestrian crossings will remain closed during the break, however, access through the intersection will be provided via the pedestrian crossings, shown in the map overleaf.

Barriers, mesh or bunting will be in place to delineate pedestrian paths on the south west corner and the southern side of the pedestrian crossing on Mann Road. There will be signage in place advising of closed footpaths and to direct pedestrians to the correct path. The temporary road and pedestrian conditions can be seen in the map overleaf.



Traffic and pedestrian conditions during the Christmas/New Year period

DPTI appreciates your patience and cooperation while these important works are undertaken.

If you have any questions or would like to speak to a member of the project team, please call 1300 794 880 or email dpti.communityrelations@sa.gov.au.

Yours sincerely

Community and Stakeholder Engagement Team

Department of Planning, Transport and Infrastructure

December 2019