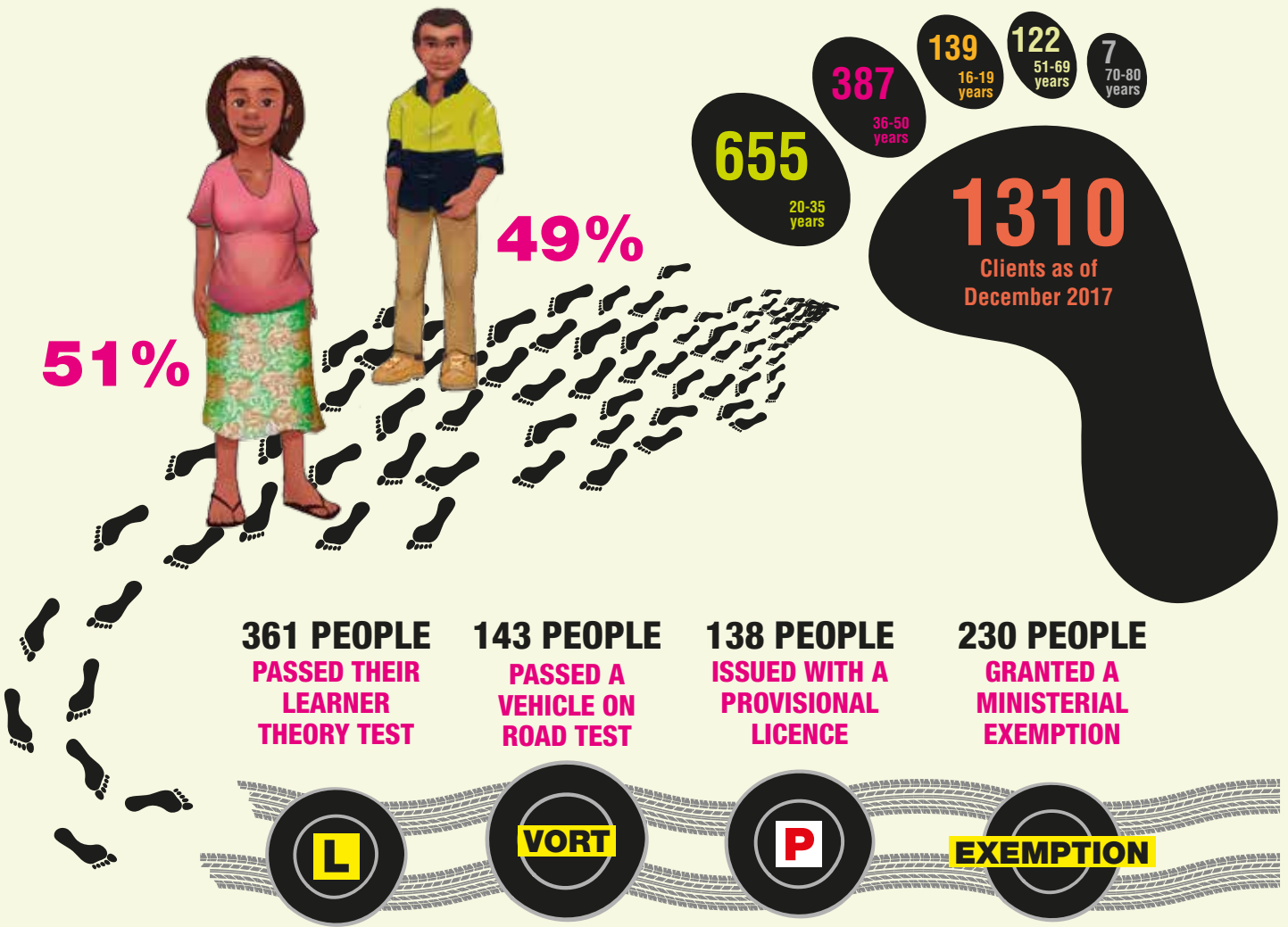




# HOW'S IT TRACKING?



<b>PLANNED FOR</b> <b>2018</b>	<p>TEAM MEMBERS <b>4</b></p>	<p>DRIVING INSTRUCTORS <b>7</b></p>	<p>TRAINING VEHICLES <b>4</b></p>	<p>TEAM VISITS <b>27</b></p>	<p><b>COMMUNITIES</b></p> <p>Amata Iwantja Kaltjiti Mimili Nyapari</p> <p>Pipalyatjara Pukatja Oak Valley Yalata Kanpi</p>
-----------------------------------	----------------------------------	---	---------------------------------------	----------------------------------	--

FOR MORE INFORMATION ABOUT ON THE RIGHT TRACK REMOTE, VISIT [www.dpti.sa.gov.au/ontherighttrack](http://www.dpti.sa.gov.au/ontherighttrack)



Government of South Australia  
Department of Planning,  
Transport and Infrastructure