



Cape Jervis and Kangaroo Island Ports Upgrade

Project Update – July 2024

Major works to upgrade the port infrastructure at Cape Jervis and Penneshaw are underway, and we are making good progress. This update provides an overview of key activities scheduled over the coming months and how we are working to minimise impacts on the environment, the community and tourism.

Cape Jervis Update



Image 1: Works underway at the Cape Jervis Port precinct

Works to construct the rock anchors, that provide stability to the new structure, are continuing. In June, we brought additional construction equipment to site, including marine barges and a piling rig. We can then construct a piling platform adjacent to the SeaLink terminal building and begin piling.

Piling works will mostly be undertaken at night to minimise any interface with ferry services. We are doing all we can to reduce noise, however, some noise can still be expected throughout piling works.



Government
of South Australia

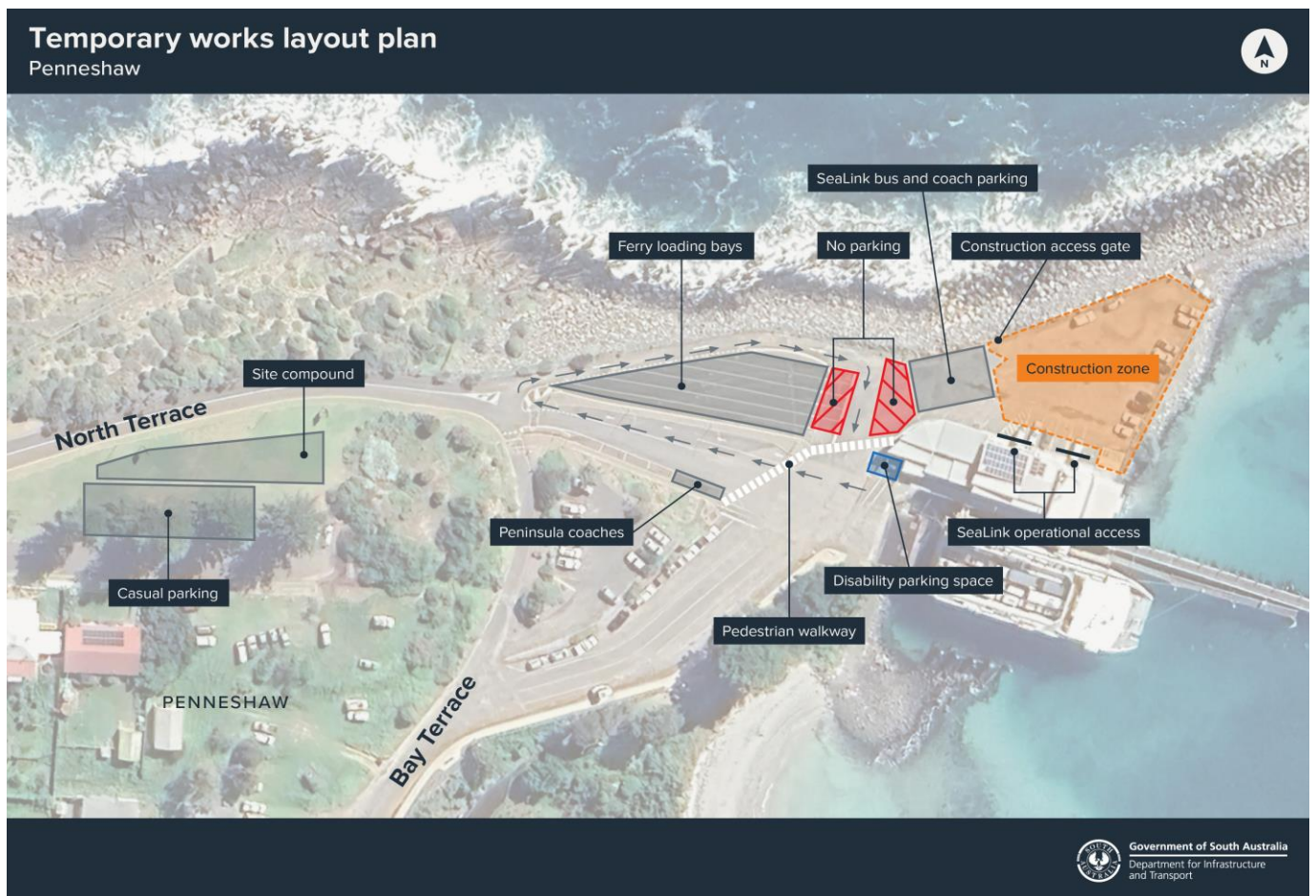
Department for Infrastructure
and Transport

Penneshaw Update

Site facilities have been set up on North Terrace and changed traffic conditions are in place to ensure public and worker safety in and around work zones. Bus parking remains near the terminal and some additional casual parking has been created on Bay Terrace to accommodate visitors to the terminal precinct. A new temporary operational access point for SeaLink staff has been installed. Please refer to the site layout map below.

Following the installation of a temporary gangway, works to demolish the remaining identified sections of the Penneshaw jetty will continue through July. Construction of the upgraded and realigned jetty is set to commence later in the year.

A significant portion of works will need to be undertaken at night in order to limit impacts to ferry services. Every effort will be made to minimise the impact of night works in the community and to the environment by utilising noise and light management tools, such as directional lighting and noise suppression blankets.



Temporary electronic signs have been installed at the Penneshaw harbour precinct. These signs will be used to provide important information about upcoming works, including night works. We also encourage you to subscribe for project updates at www.dit.sa.gov.au/kiports

Those registered will receive regular project updates, as well as advance notice of all upcoming night works in Penneshaw.



Image 2: A pair of Penneshaw's Little Penguins (*Eudyptula*)

Protecting the environment

We understand that the waters surrounding the project sites are located within the Encounter Marine Park and border Backstairs Passage. While these waters are a migratory path for Southern Right Whales (*Eubalaena australis*) and Humpback Whales (*Megaptera novaeangliae*), the high level of marine traffic and disturbance at both ports means that the project footprint is generally unfavourable for native fauna, other than the Little Penguins and Hooded Plovers.

We know Little Penguins (*Eudyptula minor*) are active in the vicinity of the Penneshaw site area all year-round. We have enjoyed working closely with the Penneshaw Penguin Centre to learn more about the Little Penguins and how they move in the area.

Surveys have been undertaken in partnership with the Penneshaw Penguin Centre and the KI Landscape Board, to determine the presence of nearby burrows. The findings outlined in these surveys have informed our construction methodology and mitigation measures. We also have clear processes in place to ensure the safety of marine life if any were to stray into the work zone.

Mitigating Environmental Impacts

Some of the mitigation measures that we will implement include:

- Noise management practices, such as the use of bored piles, to minimise vibrational and noise disturbances.
- Use of directional lighting, which will focus on the work site and be directed away from identified burrows.
- Inclusion of Little Penguin specific information in site inductions to ensure all workers are aware of the presence of the penguins and nearby burrows.

We will continue to work closely with the Penneshaw Penguin Centre to review our mitigation and construction methodology, ensuring we protect and safeguard the unique environment of Kangaroo Island.

Cruise ship update

We know how important the cruise ship industry is to Kangaroo Island and we have made a commitment to ensure cruise ship tenders can continue to berth at Penneshaw during the Port Upgrade.

Along with our contractor, we have been investigating possible interim solutions for cruise ship tenders at Penneshaw. Options considered included Christmas Cove Marina and a temporary facility within the Penneshaw Port, adjacent the current facility.

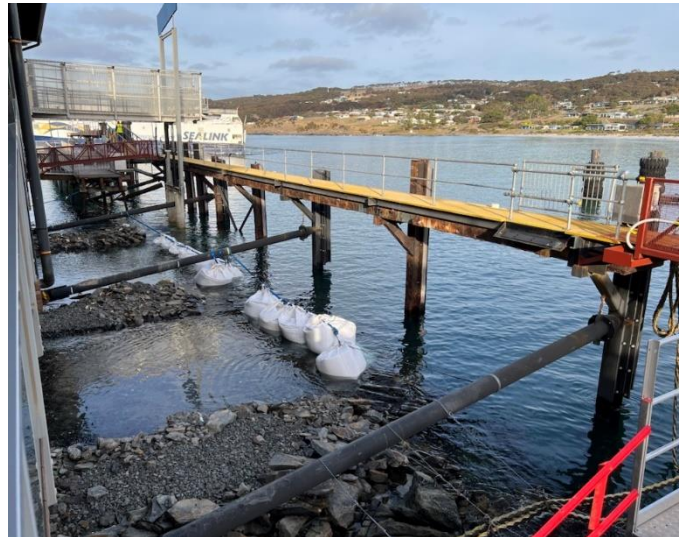


Image 3: Works underway at the Penneshaw Port Precinct

To assist with these investigations, site surveys were undertaken in the area, as well as meetings with key stakeholders such as the South Australian Tourism Commission, the Kangaroo Island Tourism Alliance and KI Council.

It has been determined that temporary facilities within the Penneshaw Port is the most suitable solution. These facilities will be in place ready to be used for cruise ship tender berthing when cruises resume in October 2024. This option will ensure uninterrupted tourism to Kangaroo Island, while allowing construction of the new berthing and mooring infrastructure to continue. We'll provide more information on these temporary cruise ship tender facilities closer to the time.

On completion of the project, the existing cruise ship landing and realigned jetty will reopen to the public, ensuring a seamless transition and access for cruise ship passengers to explore Kangaroo Island.

Kangaroo Island Road Safety and Bushfire Resilience Package

With current works completed, our crews will return after the colder months to finalise all works by late 2024. Prior to leaving the Island, we will reinstate posted speed limits within our work areas on Hog Bay Road and Playford Highway until works re-commence in September 2024. For more information visit www.dit.sa.gov.au/KIRoads

The draft **Penneshaw Harbour Precinct Master Plan** is currently being prepared following initial community and stakeholder feedback. The draft plan will be shared in the coming months.

Further information

For more information, and to register to receive future project updates, please call us on 1300 794 880, email us at DIT.KangarooIsland@sa.gov.au or visit www.dit.sa.gov.au/KIPorts