

# ROAD CRASHES in South Australia

Statistical Summary of Road Crashes  
& Casualties in 2022



**ROAD  
SAFETY**



Government  
of South Australia

**Prepared by Department for Infrastructure and Transport**

Only available in electronic format from the Department for Infrastructure and Transport Road Safety website:  
<http://dpti.sa.gov.au/towardszerotogether>

**Further Information**

For further information concerning road crash statistics for South Australia, write to the

Department for Infrastructure and Transport  
GPO Box 1533  
ADELAIDE SA 5000  
**Email:** [DT.CommunityRelations@sa.gov.au](mailto:DT.CommunityRelations@sa.gov.au)

*Full Title:* Road Crashes in South Australia: Statistical Summary of Road Crashes & Casualties in 2022

*Type of Report and Period Covered:* Statistical, 2022

*Pages:* 63

ISSN 2653-1224

*Key Words:* crash, crash rate, casualty, serious injury, injuries, age, blood alcohol concentration, day, hour, fatality, month, road user, severity, sex, vehicle movement, year, statistical

**The data presented in this report is for information purposes only and should be used with care before drawing conclusions not contained in this report. Numbers may not match with future publications due to the database continually being updated with new information.**

© Department for Infrastructure and Transport, the Government of South Australia, 2022. This work is licensed under the Creative Commons Attribution 4.0 Licence which allows re-users to copy and distribute the work in any medium or format in unadapted form only, and only so long as attribution is given to the Department for Infrastructure and Transport, the Government of South Australia. The license allows for commercial use. All other rights are reserved.

Re-users of this work are required to attribute the work as follows: Department for Infrastructure and Transport, the Government of South Australia, >>Road Crashes in South Australia: Statistical Summary of Road Crashes & Casualties in 2022<<, Sourced on >>insert date the content was sourced<<, >>dpti.sa.gov.au/towardszerotogether<<

# Contents

<b>KEY POINTS 2022</b>	<b>3</b>
<b>SUMMARY DATA FOR 2022</b>	<b>4</b>
<b>PREFACE</b>	<b>5</b>
How are crashes processed?	5
Scope	5
Related Publications	5
Acknowledgements	5
Definitions & Explanatory Notes	6
<b>CRASH AND CASUALTY TRENDS</b>	
Table 1 Trends in South Australia, 1995 - 2022	9
Figure 1 Data Trends in South Australia, 1995 - 2022	10
Figure 2 Fatality Rate in South Australia, 1995 - 2022	10
Table 2 Comparison with other Australian Jurisdictions, 2022	11
Table 3a Road Crash Fatalities by Age Group compared with Deaths Registered in South Australia, 2021	11
Table 3b Age of Passenger Vehicles Involved in Serious Casualty Crashes, 2018 - 2022	11
Table 4 Casualties by Road User Type and Severity, 1995 - 2022	12
Table 5 Casualties by Age Group and Severity, 1995 - 2022	13
Table 6 Casualties by Sex and Severity, 1995 - 2022	14
Table 7 Crashes and Casualties by Region and Severity, 1995 - 2022	15
<b>ROAD CRASHES in 2022</b>	<b>16</b>
<b>Time Distribution of Crashes</b>	
Table 8 Crashes and Casualties during Holiday Periods by Severity	17
Table 9a Casualty Crashes by Time of Day, Day of Week	18
Figure 3 Casualty Crashes by Time of Day, Day of Week	18
Table 9b Casualties by Time of Day, Day of Week	19
Table 9c All Crashes by Time of Day, Day of Week	19
Table 10 Crashes and Casualties by Month of Year and Severity	19
<b>Crash Type</b>	
Table 11a Crashes and Casualties by Crash Type and Severity: <i>Metropolitan Adelaide</i>	20
Table 11b Crashes and Casualties by Crash Type and Severity: <i>Rural</i>	20
Table 11c Crashes and Casualties by Crash Type and Severity: <i>South Australia</i>	21
Table 12 Hit Fixed Object Crashes by Object First Hit and Severity	21
Table 13 Single Vehicle Crashes by Motor Vehicle Type and Severity	21
Figure 4 Definition for Coding Accidents Table	22
Table 14a Crashes and Casualties by Crash Type Code and Severity: <i>Metropolitan Adelaide</i>	23
Table 14b Crashes and Casualties by Crash Type Code and Severity: <i>Rural</i>	25
Table 14c Crashes and Casualties by Crash Type Code and Severity: <i>South Australia</i>	27
<b>Location &amp; Distribution of Crashes</b>	
Table 15a Crashes and Casualties by Location Type and Severity: <i>Metropolitan Adelaide</i>	29
Table 15b Crashes and Casualties by Location Type and Severity: <i>Rural</i>	29
Table 15c Crashes and Casualties by Location Type and Severity: <i>South Australia</i>	30
Table 16a Crashes and Casualties by Traffic Control and Severity: <i>Metropolitan Adelaide</i>	30
Table 16b Crashes and Casualties by Traffic Control and Severity: <i>Rural</i>	31
Table 16c Crashes and Casualties by Traffic Control and Severity: <i>South Australia</i>	31
Table 17 Crashes and Casualties by Area Speed Limit, Region & Severity	32
Table 18 Crashes and Casualties by Light Conditions, Region & Severity	32
Table 19 Crashes and Casualties by Vertical Alignment, Region & Severity	33
Table 20 Crashes and Casualties by Horizontal Alignment, Region & Severity	33
Table 21 Crashes and Casualties by Road Moisture, Region & Severity	34
Table 22 Crashes and Casualties by Route and Severity	34
Table 23a Crashes and Casualties by Local Government Area and Severity: <i>Metropolitan Adelaide: Council Roads</i>	35
Table 23b Crashes and Casualties by Local Government Area and Severity: <i>Metropolitan Adelaide: Departmental Roads</i>	36
Table 23c Crashes and Casualties by Local Government Area and Severity: <i>Metropolitan Adelaide: All Roads</i>	37
Table 24a Crashes and Casualties by Local Government Area and Severity: <i>Rural: Council Roads</i>	38
Table 24b Crashes and Casualties by Local Government Area and Severity: <i>Rural: Departmental Roads</i>	40
Table 24c Crashes and Casualties by Local Government Area and Severity: <i>Rural: All Roads</i>	42
Table 25 Top Intersections with highest number of Casualty Crashes 2022	44

<b>Motor Vehicle Type, Movement &amp; Involvement</b>		
Table 26	Motor Vehicles Involved in and Responsible for Crashes by Region and Severity	45
Table 27	Crashes and Casualties by Vehicle Movement of Motor Vehicle Responsible and Severity	46
Table 28	Crashes and Casualties by Pedestrian Responsible, Movement and Severity	46
Table 29	Crashes by Motor Vehicle Type Involved and Severity	47
<b>Speed Involvement</b>		
Table 30	Crashes and Casualties by Speed Involvement and Severity	47
<b>CASUALTIES in 2022</b>		<b>48</b>
<b>Road User</b>		
Table 31	Casualties by Road User Type, Severity, Age & Sex	49
Table 32	Casualties by Unit Type and Severity	50
Table 33	Motor Vehicle Casualties by Position in Vehicle and Severity	50
<b>Seatbelts &amp; Helmets</b>		
Table 34	Casualties by Road User Type, Safety Device and Severity	51
<b>Alcohol</b>		
Table 35	Driver and Motorcycle Rider Casualties with BAC	52
<b>Drugs</b>		
Table 36	Driver and Motorcycle Rider Casualties with Drugs	52
<b>Responsibility</b>		
Table 37a	Road User Involved in and Responsible for Crashes by Age & Sex: <i>Fatal Crashes</i>	53
Table 37b	Road User Involved in and Responsible for Crashes by Age & Sex: <i>Serious Injury Crashes</i>	54
Table 37c	Road User Involved in and Responsible for Crashes by Age & Sex: <i>Minor Injury Crashes</i>	55
Table 37d	Road User Involved in and Responsible for Crashes by Age & Sex: <i>Property Damage Crashes</i>	56
Table 37e	Road User Involved in and Responsible for Crashes by Age & Sex: <i>All Crashes</i>	57
Table 38	Drivers & Motorcycle Riders Involved in and Responsible for Crashes by Licence Type and Severity	58
Table 39a	Drivers & Motorcycle Riders Responsible for Crashes by Licence Type and Age: <i>Fatal Crashes</i>	58
Table 39b	Drivers & Motorcycle Riders Responsible for Crashes by Licence Type and Age: <i>Serious Injury Crashes</i>	59
Table 39c	Drivers & Motorcycle Riders Responsible for Crashes by Licence Type and Age: <i>Minor Injury Crashes</i>	59
Table 39d	Drivers & Motorcycle Riders Responsible for Crashes by Licence Type and Age: <i>Property Damage Crashes</i>	60
Table 39e	Drivers & Motorcycle Riders Responsible for Crashes by Licence Type and Age: <i>All Crashes</i>	60
<b>REFERENCE INFORMATION for South Australia</b>		<b>61</b>
<b>Demographic Data</b>		
Table 40	Estimated Population by Age and Sex	62
Table 41	Licence and Permit Holders by Age and Sex	62
<b>Vehicle Information</b>		
Table 42	Motor Vehicle on Register by Vehicle Type	63
Table 43	Vehicle Kilometres Travelled by Jurisdiction	63

# Key Points 2022

- A total of 13,355 crashes were processed for South Australia in 2022 - 68 fatal crashes, 575 serious injury crashes, 2,906 minor injury crashes and 8,806 property damage crashes. This resulted in 71 lives lost, 652 serious injuries and 3,600 minor injuries.

The 71 lives lost that occurred in 2022 resulted in a fatality rate per 100 000 population of 3.9, below the national figure of 5.9.

- **Greater Adelaide area** - The number of fatal crashes resulting in lives lost in the Greater Adelaide area decreased in 2022 compared to 2021, as did the number of serious injury crashes. There were 31 fatal crashes, nine less than the previous year and ten less than the previous five-year average.

There were 338 serious injury crashes in 2022, this is a 35% decrease from the 523 in 2021 and is 17% below the previous five-year average of 412 each year.

Within Greater Adelaide, 29% of fatal crashes in 2022 were at intersections, up from 25% in 2021.

- **Rural areas** - Fatal crashes resulting in lives lost have decreased in rural areas in 2022 compared to 2021. There were 37 fatal crashes in rural areas in 2022, 17 less than 2021 and 15 below the previous five-year average.

Serious injury crashes increase from 193 in 2021 to 237 in 2022, up also on the previous five-year average of 205 each year.

In rural areas, 70% of fatal crashes were single vehicle crashes, such as a vehicle rolling over or hitting objects such as trees. This is a decrease from 78% in 2021.

- **Young road users** - The number of 16-19 year olds who lost their life remained the same, nine people in this age group lost their life in 2022, this is the same number as 2021 and equal to the five year average of nine lives lost each year. The number of lives lost in the 20-24 year old range lowered from 10 in 2021 to 7 in 2022, the previous five year average was 11 lives lost each year.

The number of 16-24 year olds seriously injured decreased from 185 in 2021 to 120 in 2022, this is below the five year average of 136 for 16-24 year olds seriously injured each year.

- **Older road users** - The number of people aged 70 or over who lost their life decreased from 18 in 2021 to 11 in 2022. This is the lowest during the last five-year period and 10 below the five-year average.

Serious injuries decreased from 95 in 2021 to 83 in 2022, the previous five-year average is 97 serious injuries for this age group each year.

- Drivers (incl. heavy vehicle drivers) who lost their lives declined from 46 in 2021 to 38 in 2022. Passengers who lost their lives also decreased from 16 in 2021 to nine in 2022. The previous five-year average shows 48 drivers and 13 passengers lost their lives each year.

Drivers (incl. heavy vehicle drivers) seriously injured decreased from 332 in 2021 to 268 in 2022. Passengers seriously injured also decreased from 119 in 2021 to 106 in 2022. The previous five-year average shows 313 drivers and 106 passengers were serious injured each year.

- **Motorcyclists** - The number of lives lost decreased from 18 in 2021 to 13 in 2022. The five-year average of motorcyclists killed is 18 per year.

Serious injuries declined from 193 in 2021 to 147 in 2022, below the previous five-year average of 160 serious injuries each year.

- **Pedestrians** - The number of lives lost decreased from 14 in 2021 to 11 in 2022. This number is below the average of 13 deaths per year over the previous five years.

Serious injuries also decreased for pedestrians from 84 in 2021 to 76 in 2022, this is above the five-year average of 64 pedestrians serious injured each year.

- **Cyclists** - The number of lives lost decreased from five in 2021 to three in 2022. The five-year average of cyclists killed is five per year.

The number of cyclists serious injured has also decreased from 93 in 2021 to 53 in 2022. The five-year average of cyclists seriously injured is 70 per year.

- **Seatbelts** - 36% of drivers and passengers who lost their life in 2022 were not wearing a seatbelt at the time of the crash. An increase compared to 27% in 2021.

# Summary Data for 2022

	Number
<b>CRASHES</b>	
Fatal Crashes	68
Serious Injury Crashes	575
Minor Injury Crashes	2 906
Property Damage Crashes	8 806
<b>TOTAL</b>	<b>12 355</b>
<b>CASUALTIES</b>	
Fatalities	71
Serious Injuries	652
Minor Injuries	3 600
<b>TOTAL</b>	<b>4 323</b>
<b>OTHER DATA</b>	
<b>Vehicles on motor vehicle register<sup>1</sup></b>	<b>1 561 948</b>
Fatalities per 10 000 vehicles	0.45
Serious injuries per 10 000 vehicles	4.17
Casualties per 10 000 vehicles	27.68
<b>Licence holders<sup>2</sup></b>	<b>1 329 139</b>
Driver/rider fatalities per 10 000 licence holders	0.38
Driver/rider serious injuries per 10 000 licence holders	3.06
Driver/rider casualties per 10 000 licence holders	22.34
<b>Population<sup>3</sup></b>	<b>1 821 200</b>
Fatalities per 100 000 population	3.90
Serious Injuries per 100 000 population	35.80
Casualties per 100 000 population	237.37

<sup>1</sup> Excludes trailers, caravans, plant and equipment. Source: Registration and Licensing, Department for Infrastructure and Transport, June 2022.

<sup>2</sup> No. of individual licence holders (inc. learner's permit). Source: Registration and Licensing, Department for Infrastructure and Transport, December 2022.

<sup>3</sup> Estimated resident population. Source: *Australian Demographic Statistics*, ABS, cat. no. 3101.0, June 2022.

# Preface

This publication presents information compiled from police reported crashes in South Australia for 2022 and is the fifty third edition in an annual series that commenced with 1967 data.

## How are crashes reported and processed?

---

When a reportable road crash occurs, South Australia Police (SAPOL) collect the data which is entered into SAPOL's SHIELD system. The reports are then electronically forwarded to the Road Safety section of the Department for Infrastructure and Transport (the Department) for further processing and geocoding. The information is checked for accuracy and consistency to ensure the reliability of any published statistics. Processed crash data is stored in the Department's 'Road Crash Database' (TARS).

Serious injury data reflects on-going improvements made by SAPOL to its data collection methods. Historically, the decision to report a road crash casualty as being 'admitted to hospital' was sometimes made by the police at the scene of the crash when a person was taken away by ambulance. From 2008, SAPOL officers started to verify whether injured persons were formally admitted to hospital rather than just being treated as a casualty at hospital and released. This improved classification of seriously injured casualties was utilised in an increasing proportion of collision reports until complete coverage occurred in 2012.

**The data presented in this report is for information purposes only and should be used with care before drawing conclusions not contained in this report. Details in this publication may differ from information previously released or published due to the database continually being updated with new information. Road crash information contained in this publication is derived from TARS. Please note, data reported within this publication is correct at the time of extraction. Due to continual quality assurances and process updates historical data may not match previous publications.**

## Scope

---

**Note:** The following changes were made to the Property Damage Only (PDO) definition in 2003, 2013, 2016 and 2017:

### **1 January 2017**

The Department processed all casualty crashes and only 'property damage' crashes involving any type of vehicle towed away from the crash or where involving:

- a motorcycle (includes quad bikes), motor scooter, e-scooter, motorised bicycle and regular bicycle, regardless of whether another vehicle was involved;
- any type of heavy vehicle with a GVML > 4.5 tonnes or a bus with 13 seats or more;
- a train or tram colliding with a vehicle or pedestrian within the road related area; and
- any type of vehicle colliding with a pedestrian.

### **1 December 2016**

The Department processed all 'property damage' crashes for the month of December 2016 in accordance with the Australian Transport Safety Bureau (ATSB) guidelines.

Prior to 1 December 2016, the crash statistics included in this publication were confined to those crashes which:

- were reported to SA Police (SAPOL) (excludes SAPOL online crash reporting);
- occurred on a road, defined in the Road Traffic Act 1961;
- were defined by the ATSB publication "Guidelines For Determining Events as Road Crashes in Australia" (published March 2000);
- involved at least one moving vehicle;
- involved at least one person being killed or injured, vehicle towed away, or total property damage of \$5000 or greater; and
- included all crashes involving bicycles, motorcycles and scooters (irrespective of damage value or injury level).

### **1 January 2013**

The Department only processed 'property damage' crashes with an aggregated damage value of \$5000 or greater, or where a vehicle was towed away.

### **1 July 2003**

The Department only processed 'property damage' crashes where the value was \$3000, or where a vehicle was towed away. Preceding this, the 'property damage' crash value was \$1000 introduced on 1 January 1998.

## Related Publications

---

All monthly and annual statistical reports are available from the Department's Road Safety website.

[https://towardszerotogether.sa.gov.au/road\\_crash\\_facts](https://towardszerotogether.sa.gov.au/road_crash_facts)

## Acknowledgements

---

Acknowledgement is extended to the South Australia Police for the supply of reported road crash reports.

## Notes

---

From 1 January 2013, new ABS boundaries were introduced into the coding corresponding to the Greater Adelaide City Statistical Area, replacing the previous metro/rural boundaries. As a consequence, Mt Barker and Adelaide Hills Council, part of Adelaide Plains Council, Barossa and Light Councils are now incorporated into Metropolitan Adelaide.

Definitions & Explanatory Notes

---

<b>BAC</b>	Blood Alcohol Concentration (mg/100mL).
<b>Bicycle</b>	Any two or three wheeled device operated by pedals and propelled by human power. Includes motorised bicycles.
<b>Bicycle Rider</b>	A person occupying the controlling position of a bicycle.
<b>Bicyclist</b>	A bicycle rider or passenger, often referred to as a cyclist.
<b>Driver</b>	A controller of a motor vehicle other than a motorcycle or bicycle.
<b>Drug</b>	Methamphetamine, MDMA (Ecstasy) and/or THC (cannabis).
<b>Casualty</b>	Any person killed or injured as a result of a crash.
<b>Casualty Crash</b>	A Crash where someone has been killed or injured as a result of the crash.
<b>Crash Type Code (DCA)</b>	Definition for Coding Accidents - a coding system to describe the events involved in a crash. The 'crash-type' is based on the traffic movements leading up to the crash. Participant intent, as well as actual movement, is used in determining the DCA crash type.
<b>Fatal Crash</b>	A crash for which there is at least one fatality.
<b>Fatality/Life lost</b>	A person who dies within 30 days of a crash as a result of injuries sustained in that crash.
<b>Heavy Vehicle</b>	Heavy vehicle includes the following vehicle types: Rigid truck, Semi-Trailer, Bus, B Double and other defined special vehicles.
<b>Intersection Crash</b>	A crash for which the first impact occurs at or within a 20 metre radius of an intersection.
<b>Metropolitan</b>	Greater Adelaide City Statistical Area. Comprises of the following Local Government Areas: Adelaide, Burnside, Campbelltown, Charles Sturt, Holdfast Bay, Marion, Mitcham, Norwood Payneham & St Peters, Onkaparinga, Playford, Port Adelaide & Enfield, Prospect, Salisbury, Tea Tree Gully, Unley, Walkerville, West Torrens, Adelaide Hills, Mount Barker, Gawler and part of Barossa, Light and Adelaide Plains councils.
<b>Mid-block Crash</b>	A crash that occurs between two intersections.
<b>Minor Injury</b>	A person who sustains injuries requiring medical treatment, either by a doctor or in a hospital, as a result of a road crash, who was not admitted to hospital and who does not die as a result of those injuries within 30 days of the crash.
<b>Minor Injury Crash</b>	A crash in which at least one person sustains injury but no person is seriously injured or dies within 30 days of the crash.
<b>Motor Vehicle</b>	Any road vehicle which is mechanically or electrically powered but not operated on rails.
<b>Motorcycle</b>	Any mechanically or electrically propelled two or three wheeled vehicles with or without side-car; includes solo motorcycle, motorcycle with sidecar, motor scooter, mini-bike, and quad bikes.
<b>Motorcycle Rider</b>	A person occupying the controlling portion of a motorcycle.
<b>Motorcyclist</b>	Motorcycle rider or pillion passenger.
<b>Other Road User</b>	Occupants/controllers of animal drawn vehicles, ridden animals, railway vehicles, tram, and other defined special vehicle.
<b>Other Vehicle Type</b>	Animal drawn vehicles, ridden animals, railway vehicles, and tram.
<b>Passenger</b>	Any person, other than the controller, who is in, on, or falling from a road vehicle at the time of the crash, provided a portion of the person is in/on the road vehicle. It does not include those that are boarding or alighting a road vehicle at the time of the crash.
<b>Passenger Vehicle</b>	Includes all cars and car derivatives including 4WDs, vans, utilities, and station wagons. Excludes heavy vehicles, light trucks ( $\leq 4.5$ tonnes), motorcycles and bicycles.
<b>Pedestrian</b>	Any person who is standing, walking, playing, lying on the road or alighting or boarding a road vehicle at the time of the crash. It does not include those that have fallen from a vehicle. Also includes riders and passengers of motorised wheelchairs/wheelchairs, small wheeled vehicles and gopher users.



## OFFICIAL

<b>Pillion Passenger</b>	A passenger on but not controlling a motorcycle.
<b>Property Damage Crash</b>	A crash resulting in property damage in excess of the prescribed amount in which no person is injured or dies within 30 days of the crash.
<b>Road Crash</b>	Any apparent unpremeditated event reported to the police and resulting in death, injury or property damage in excess of the prescribed amount, and attributed to the movement of the road vehicle on a road.
<b>Road User</b>	Any person who is a pedestrian, rider, or the occupant of a road vehicle.
<b>Rural</b>	Area outside of metropolitan Adelaide. Comprises of the following local government areas: Ceduna, Cleve, Elliston, Franklin Harbor, Kimba, Lower Eyre Peninsula, Port Lincoln, Streaky Bay, Tumby Bay, Whyalla, Cooper Pedy, Finders Ranges, Port Augusta, Roxby Downs, Alexandrina, Kangaroo Island, Victor Harbor, Yankalilla, Grant, Mount Gambier, Naracoorte Lucindale, Robe, Tatiara, Wattle Range, Berri and Barmera, Karoonda East Murray, Loxton Waikerie, Mid Murray, Murray Bridge, Renmark Paringa, Southern Mallee, The Coorong, Barunga West, Clare & Gilbert Valleys, Copper Coast, Goyder, Mount Remarkable, Northern Areas, Orroroo/Carrieton, Peterborough, Port Pirie, Wakefield, Yorke Peninsula and part of Barossa, Light and Adelaide Plains councils.
<b>Serious Casualty</b>	A fatality/live lost or serious injury.
<b>Serious Injury</b>	A person who sustains injuries and is admitted to hospital for a minimum period of an overnight stay as a result of a road crash and who does not die as a result of those injuries within 30 days of the crash.
<b>Serious Injury Crash</b>	A non-fatal crash in which at least one person is seriously injured.
<b>Vehicle Occupant</b>	Driver or passenger within a motor vehicle.

### Speed definition

---

A motor vehicle is assessed as having been speeding if it satisfies the conditions described below:

- a) The vehicle's controller (driver or rider) was charged with a speeding offence; or the vehicle was described by police as travelling at excessive speed; or the stated speed of the vehicle was in excess of the speed limit; or the vehicle weight or the speed of the vehicle was faster than that allowed for the licence class of the driver or rider, or the vehicle weight, OR
- b) The vehicle was performing a manoeuvre characteristic of excessive speed, that is:
  - while on a curve the vehicle jack-knifed, skidded, slid or the controller lost control; or
  - the vehicle ran off the road while negotiating a bend or turning a corner and the controller was not distracted by something or disadvantaged by drowsiness or sudden illness; and was not swerving to avoid another vehicle, animal or object and the vehicle did not suffer equipment failure.

This is based on Transport for NSW criteria for determining whether or not a crash is to be considered as having involved speed as a contributing factor.

# CRASH & CASUALTY TRENDS

---

- Historical Data
- Fatality Rates
- Interstate and International Comparisons
- Causes of Death
- Road User Type
- Age & Sex
- Region

Table 1: Trends in South Australia, 1995 - 2022

Year	Crashes						Casualties					Vehicles on Register <sup>1</sup> (‘000)	Licence Holders <sup>2</sup> (‘000)	Population <sup>3</sup> (‘000)	Vehicle Travelled <sup>4</sup> (‘000 000)	Fatalities per			100, (M) Vehicle Kilometres Travelled
	Fatal Crashes	Serious Injury Crashes	Minor Injury Crashes	TOTAL Casualty Crashes	Property Damage Crashes	ALL Crashes	Fatalities	Serious Injuries	Minor Injuries	ALL Casualties	10,000 Vehicles					Licence Holders <sup>5</sup>	100,000 Population		
1995	164	1185	5097	6446	32844	39290	182	1521	6638	8341	945	975	1469	13195	1.93	0.98	12.39	1.38	
1996	162	1324	5023	6509	32432	38941	181	1720	6775	8676	959	979	1474	-	1.89	1.09	12.28	-	
1997	124	1168	5138	6430	32442	38872	149	1509	6716	8374	969	995	1479	-	1.54	0.80	10.07	-	
1998	152	1225	5551	6928	32664	39592	168	1566	7345	9079	995	995	1487	13974	1.69	0.85	11.30	1.20	
1999	132	1238	6047	7417	34287	41704	153	1607	8071	9831	1010	1012	1493	13081	1.52	0.85	10.25	1.17	
2000	151	1229	6433	7813	33172	40985	166	1627	8501	10294	1011	1025	1498	13153	1.64	1.04	11.08	1.26	
2001	137	1245	6351	7733	33041	40774	154	1603	8497	10254	1023	1045	1502	15085	1.51	0.85	10.25	1.02	
2002	138	1199	6249	7586	32525	40111	154	1538	8382	10074	1045	1047	1522	14855	1.47	0.88	10.12	1.04	
2003	135	1169	5786	7090	23220	30310	156	1470	7597	9223	1034	1052	1527	14963	1.51	0.85	10.21	1.04	
2004	128	1071	5521	6720	15548	22268	139	1331	7297	8767	1049	1072	1534	15241	1.32	0.93	9.06	0.91	
2005	126	994	5106	6226	14945	21171	147	1296	6629	8072	1065	1094	1542	14533	1.38	0.84	9.53	1.01	
2006	104	1092	5009	6205	14513	20718	117	1358	6489	7964	1085	1042	1555	15535	1.08	0.77	7.53	0.75	
2007	108	1090	5295	6493	15230	21723	125	1368	6961	8454	1107	1073	1585	14212	1.13	0.62	7.89	0.88	
2008	87	996	5615	6698	15223	21921	99	1217	7174	8490	1171	1094	1602	-	0.85	0.56	6.18	-	
2009	104	908	5213	6225	15506	21731	119	1108	6618	7845	1201	1135	1623	-	0.99	0.65	7.33	-	
2010	105	886	5424	6415	15877	22292	118	1050	6907	8075	1226	1136	1645	14615	0.96	0.64	7.17	0.81	
2011	95	781	5471	6347	16970	23317	103	932	6896	7931	1265	1141	1657	-	0.81	0.53	6.22	-	
2012	86	637	5377	6100	16729	22829	94	761	6624	7479	1285	1155	1655	16313	0.73	0.56	5.68	0.58	
2013	89	666	5037	5792	10883	16675	97	790	6290	7177	1305	1186	1671	-	0.74	0.51	5.80	-	
2014	96	594	5005	5695	10467	16162	108	711	6163	6982	1322	1196	1686	16715	0.82	0.53	6.41	0.65	
2015	96	657	4616	5369	10063	15432	102	759	5800	6661	1349	1204	1699	-	0.76	0.52	6.00	-	
2016	77	574	4562	5213	11562	16775	86	692	5787	6565	1419	1225	1708	16915	0.61	0.40	5.04	0.51	
2017	93	533	4374	5000	8237	13237	100	622	5515	6237	1442	1238	1723	-	0.69	0.57	5.80	-	
2018	75	485	4393	4953	8646	13599	80	576	5468	6124	1443	1245	1736	17817	0.55	0.41	4.61	0.45	
2019	110	729	3937	4776	8188	12964	114	833	5084	6031	1460	1257	1751	-	0.78	0.61	6.51	-	
2020	85	624	3259	3968	7566	11534	93	715	4069	4877	1485	1283	1770	16392	0.63	0.51	5.25	0.57	
2021	94	716	3546	4356	8793	13149	99	827	4442	5368	1526	1309	1773	16392	0.65	0.48	5.58	0.60	
2022	68	575	2906	3549	8806	12355	71	652	3600	4323	1561	1329	1821	16164	0.45	0.38	3.90	0.44	

<sup>1</sup> At June 2022. Excludes tractors, trailers, caravans, plant and equipment. Source: TRUMPS database, Registration & Licensing Section, Department for Infrastructure and Transport.

<sup>2</sup> At December 2022. Source: TRUMPS database, Registration & Licensing Section, Department for Infrastructure and Transport.

<sup>3</sup> Population as of June 2022. Source: Australian Bureau of Statistics, *Australian Demographic Statistics*, cat.no. 3101.0.

<sup>4</sup> Travel for the year 2022. Source: BITRE, Road Trauma Australia 2022 Statical Summary.

<sup>5</sup> Licence holder fatality rate is based on driver and rider lives lost only.

**Note:**

Changes were made to the Property Damage Only (PDO) definition in 1998, 2003, 2013, 2016 and 2017. Refer to **Scope**, page 5 for full details.

Figure 1: Data Trends in South Australia, 1995 - 2022

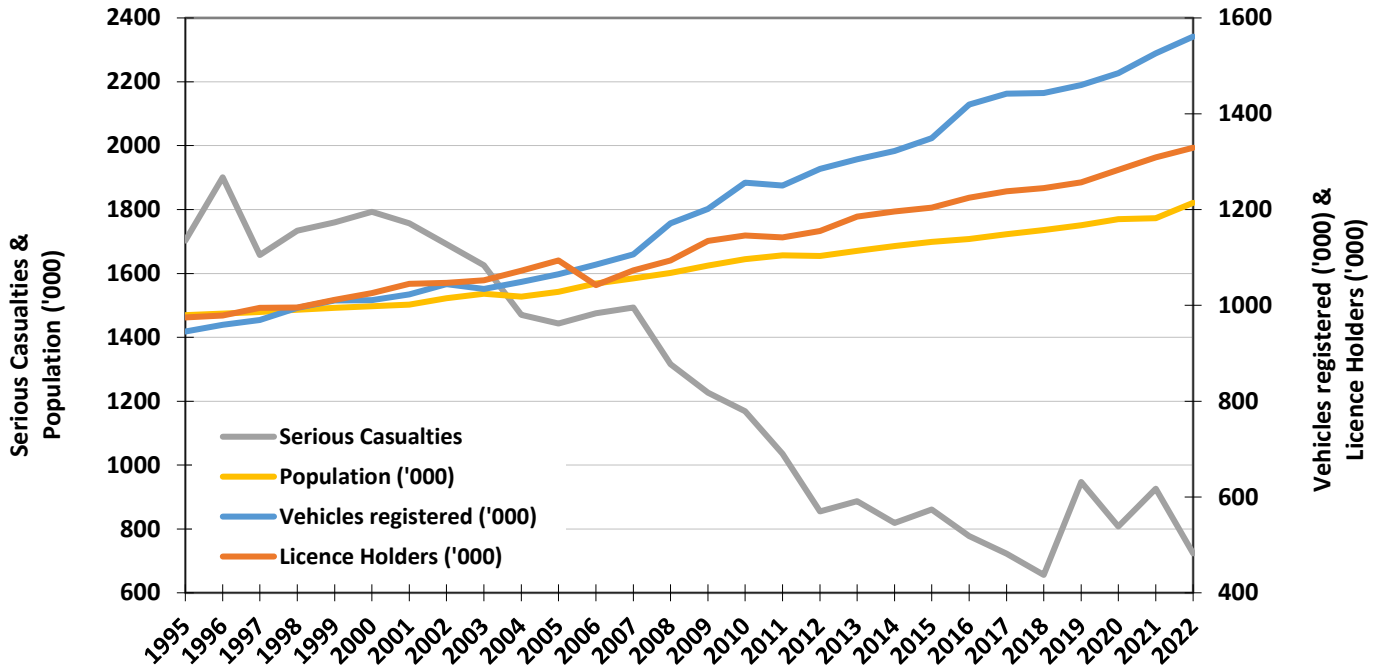
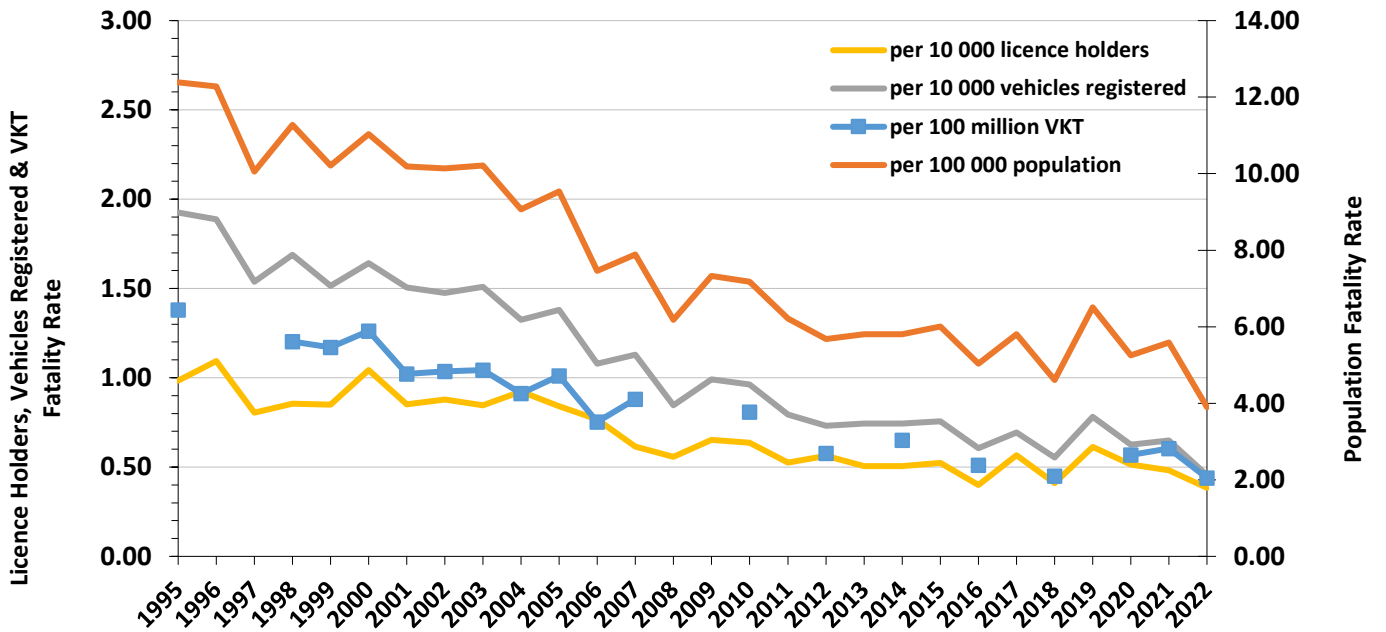


Figure 2: Fatality Rates in South Australia, 1995 - 2022



Note: Changes were made to the Property Damage Only (PDO) definition in 1998, 2003, 2013, 2016 and 2017. Refer to Scope, page 5 for full details.

Table 2: Comparison with other Australian Jurisdictions<sup>1</sup>, 2022

	Fatalities <sup>1</sup>	Vehicles on register <sup>2</sup> ('000)	Population <sup>3</sup> ('000)	Fatalities per 10 000 vehicles	Fatalities per 100 000 population
<b>SOUTH AUSTRALIA</b>	<b>71</b>	<b>1,562</b>	<b>1,822</b>	<b>0.45</b>	<b>3.90</b>
New South Wales	293	6,047	8,156	0.48	3.59
Victoria	242	5,273	6,620	0.46	3.66
Queensland	297	4,463	5,327	0.67	5.58
Western Australia	175	2,368	2,788	0.74	6.28
Tasmania	51	520	572	0.98	8.92
Australian Capital Territory	18	324	457	0.56	3.94
Northern Territory	47	165	251	2.85	18.73
<b>AUSTRALIA</b>	<b>1,194</b>	<b>20,680</b>	<b>25,996</b>	<b>0.58</b>	<b>4.59</b>

Table 3a: Road Crash Fatalities by Age Group compared with Deaths Registered in South Australia, 2021

Age Groups	Deaths Registered in South Australia <sup>4</sup>	Road Fatalities <sup>5</sup>	
		Number	% of All Deaths
0-14	86	1	1%
15-19	39	9	23%
20-24	46	7	15%
25-29	60	8	13%
30-34	76	4	5%
35-39	113	4	4%
40-49	336	12	4%
50-59	840	7	1%
60-69	1,618	8	0%
70+	11,280	11	0%
Unknown	0	0	0%
<b>TOTAL</b>	<b>14,494</b>	<b>71</b>	<b>0%</b>

Table 3b: Age of Passenger Vehicles Involved in Serious Casualty Crashes, last five years (2018 - 2022)

Passenger Vehicle Age Group	2017	2018	2019	2020	2021
0-4	87	154	141	134	99
5-9	139	187	169	159	147
10-14	144	182	174	200	149
15-19	119	199	145	195	152
20+	105	124	110	136	111
Unknown	6	12	3	0	8
<b>TOTAL</b>	<b>600</b>	<b>858</b>	<b>742</b>	<b>824</b>	<b>666</b>

<sup>1</sup> Australian data based on information published by the Bureau of Infrastructure, Transport and Regional Economics (BITRE) for December 2022.

<sup>2</sup> Australian figures (except SA) are as at June 2022. Source: Australian Bureau of Statistics, *Motor Vehicle Census Australia*, cat. no. 9309.0. These figures may not agree with registration statistics for individual States and Territories. Data for SA sourced from TRUMPS, as of June 2022.

<sup>3</sup> Population as of June 2022. Source: Australian Bureau of Statistics, *Australian Demographic Statistics*, cat.no. 3101.0.

<sup>4</sup> Source: Australian Bureau of Statistics, *Deaths, Australia 2019*, cat.no. 3302.0.

<sup>5</sup> Source: The Department's TARS road crash database.

**Note:**

Changes were made to the Property Damage Only (PDO) definition in 1998, 2003, 2013, 2016 and 2017. Refer to **Scope**, page 5 for full details.

Table 4: Casualties by Road User Type and Severity, 1995 - 2022

Year	Vehicle Occupant						Motorcyclist						Pedestrian			Bicyclist			Other Road User			ALL ROAD USERS		
	Driver			Passenger			Rider			Pillion Passenger			F	SI	MI	F	SI	MI	F	SI	MI	F	SI	MI
	F	SI	MI	F	SI	MI	F	SI	MI	F	SI	MI												
1995	84	648	3571	36	432	1823	12	153	359	0	22	50	40	186	411	8	80	421	0	40	3	180	1561	6638
1996	92	779	3615	40	522	1922	15	189	365	3	14	33	24	153	428	7	59	403	0	24	9	181	1740	6775
1997	67	712	3724	44	408	1749	13	144	353	1	15	31	20	147	427	4	79	427	0	20	5	149	1525	6716
1998	72	779	4213	44	383	1972	13	157	314	0	20	26	35	142	402	4	79	408	0	35	10	168	1595	7345
1999	71	749	4749	38	456	2173	15	123	277	0	14	20	26	178	419	3	84	425	1	24	8	154	1628	8071
2000	91	739	5132	37	490	2191	16	158	323	0	12	25	21	151	409	1	75	412	0	21	9	166	1646	8501
2001	76	809	5023	32	419	2298	13	156	300	1	13	21	26	143	426	6	58	417	1	26	12	155	1624	8497
2002	72	753	5012	39	434	2196	20	153	321	1	7	22	19	129	425	3	59	402	1	19	4	155	1554	8382
2003	77	783	4663	44	343	1896	12	144	280	1	19	27	17	115	359	5	63	367	5	17	5	161	1484	7597
2004	80	687	4320	23	316	1915	20	157	288	1	9	20	12	104	369	3	57	382	0	1	3	139	1331	7297
2005	74	646	3943	39	342	1598	18	125	276	2	11	19	11	111	374	3	61	418	0	0	1	147	1296	6629
2006	58	670	3772	20	302	1586	22	178	322	1	17	22	12	111	365	4	80	419	0	0	3	117	1358	6489
2007	58	685	4011	37	347	1762	8	162	409	0	10	17	17	108	330	5	56	429	0	0	3	125	1368	6961
2008	45	582	4211	24	264	1720	16	176	435	1	8	23	12	120	334	1	67	447	0	0	4	99	1217	7174
2009	60	549	4010	32	243	1479	14	159	389	1	9	15	10	89	279	2	59	442	0	0	4	119	1108	6618
2010	57	500	4205	24	211	1574	16	146	388	0	7	20	16	103	245	5	82	470	0	1	5	118	1050	6907
2011	40	445	4236	22	193	1505	20	143	361	1	9	19	17	77	269	3	61	499	0	4	7	103	932	6896
2012	52	350	4027	14	137	1431	13	113	339	2	6	14	10	77	296	3	78	516	0	0	1	94	761	6624
2013	48	384	3860	17	122	1326	12	129	369	0	5	18	15	87	231	5	63	486	0	0	0	97	790	6290
2014	52	320	3779	24	135	1225	11	127	417	0	3	20	17	62	227	4	64	495	0	0	0	108	711	6163
2015	52	358	3444	17	132	1247	11	139	386	0	6	13	18	50	205	4	74	505	0	0	0	102	759	5800
2016	41	325	3495	23	140	1200	8	105	390	0	4	9	9	66	245	5	52	448	0	0	0	86	692	5787
2017	46	313	3351	11	121	1082	24	105	377	0	3	9	17	41	246	2	39	450	0	0	0	100	622	5515
2018	41	277	3317	16	87	1079	10	97	391	0	6	11	6	58	233	7	51	435	0	0	2	80	576	5468
2019	60	349	3122	9	108	1048	17	196	294	0	5	10	21	80	220	7	94	383	0	1	7	114	833	5084
2020	47	293	2526	15	96	784	19	189	256	2	5	12	8	57	153	2	73	336	0	2	2	93	715	4069
2021	46	332	2791	16	119	854	17	189	296	1	4	5	14	84	180	5	93	308	0	6	8	99	827	4442
2022	38	268	2243	9	106	668	13	139	268	0	8	11	8	76	155	3	53	245	0	2	10	71	652	3600

F - Fatality/Life lost, SI - Serious Injury, MI - Minor Injury

**Note:**

Changes were made to the Property Damage Only (PDO) definition in 1998, 2003, 2013, 2016 and 2017. Refer to **Scope**, page 5 for full details.

Table 5: Casualties by Age Group and Severity, 1995 - 2022

Year	0-15			16-19			20-24			25-29			30-39			40-49			50-59			60-69			70+			Unknown			ALL CASUALTIES		
	F	SI	MI	F	SI	MI	F	SI	MI	F	SI	MI	F	SI	MI	F	SI	MI	F	SI	MI	F	SI	MI	F	SI	MI	F	SI	MI	F	SI	MI
1995	14	132	597	22	225	884	24	255	1094	16	168	716	39	226	1056	18	154	807	10	94	450	19	69	308	20	99	330	0	99	396	182	1521	6638
1996	12	162	642	18	230	931	27	279	1002	21	203	708	26	267	1155	23	160	824	12	98	475	15	101	286	26	118	362	1	102	390	181	1720	6775
1997	8	149	603	19	194	840	21	233	973	13	149	718	28	255	1127	11	150	866	11	91	524	12	79	307	24	110	350	2	99	408	149	1509	6716
1998	10	134	623	18	251	979	17	212	1099	12	172	820	25	225	1207	21	181	889	12	103	555	14	66	315	37	120	346	2	102	512	168	1566	7345
1999	14	147	662	21	218	987	23	222	1056	11	136	904	22	225	1337	18	172	996	11	110	620	13	81	347	20	118	343	0	178	819	153	1607	8071
2000	11	121	547	26	212	1115	16	229	1180	23	158	893	21	225	1427	21	196	1042	10	113	698	14	81	396	24	111	376	0	181	827	166	1627	8501
2001	10	101	519	16	223	1092	14	210	1168	16	159	887	32	260	1405	14	192	1120	11	128	724	13	72	346	28	80	388	0	178	848	154	1603	8497
2002	16	107	461	16	198	1142	18	213	1159	17	164	875	28	241	1385	24	177	1088	10	104	680	5	54	349	20	108	416	0	172	827	154	1538	8382
2003	11	81	434	21	189	993	20	225	1060	11	147	750	26	244	1282	19	182	1081	18	119	701	10	62	329	20	100	331	0	121	636	156	1470	7597
2004	7	64	423	7	199	905	27	212	1045	17	135	652	26	207	1204	18	169	961	17	98	626	11	56	351	9	84	369	0	107	761	139	1331	7297
2005	8	86	349	18	173	874	28	195	920	19	115	616	16	205	1099	19	157	956	11	121	626	11	77	341	17	94	315	0	73	533	147	1296	6629
2006	3	74	441	12	181	707	17	186	932	11	129	610	17	225	1028	23	181	901	14	122	681	10	70	355	10	88	344	0	102	490	117	1358	6489
2007	6	60	402	18	173	804	16	210	970	14	137	703	14	214	1102	13	167	982	10	139	691	5	73	352	29	100	388	0	95	567	125	1368	6961
2008	5	51	439	16	157	812	12	177	921	10	114	700	19	211	1156	9	164	1064	13	110	797	4	75	434	11	91	365	0	67	486	99	1217	7174
2009	4	60	393	20	138	765	22	138	827	10	124	682	17	179	1120	20	132	1040	12	112	728	2	81	417	12	94	320	0	50	326	119	1108	6618
2010	5	49	397	19	110	737	12	131	846	5	121	740	16	145	1156	22	155	1013	17	112	879	8	72	406	14	120	381	0	35	352	118	1050	6907
2011	4	43	388	6	94	694	5	127	937	9	95	688	22	146	1177	22	141	1055	12	106	833	4	77	460	19	73	390	0	30	274	103	932	6896
2012	3	32	393	7	76	616	10	104	837	7	75	695	9	106	1139	16	112	997	11	91	785	9	70	464	22	73	423	0	22	275	94	761	6624
2013	6	37	349	2	50	569	13	93	757	5	81	692	6	112	1049	20	120	959	12	117	769	9	70	457	24	82	451	0	28	238	97	790	6290
2014	7	26	337	6	80	517	11	90	764	9	71	652	13	99	998	21	122	966	6	93	773	13	54	510	22	57	423	0	19	223	108	711	6163
2015	5	28	381	7	71	525	9	84	687	7	60	594	13	128	925	13	106	826	11	105	789	14	78	442	23	80	431	0	19	200	102	759	5800
2016	5	33	382	3	81	508	12	86	733	9	76	592	11	82	923	15	94	824	3	97	711	5	51	481	23	87	438	0	5	195	86	692	5787
2017	3	26	411	8	43	487	12	56	581	8	54	560	10	81	833	11	83	806	11	88	701	12	60	450	25	110	438	0	21	248	100	622	5515
2018	4	26	382	10	48	447	7	63	606	6	50	549	7	72	904	13	79	785	7	83	743	11	55	470	15	83	425	0	17	157	80	576	5468
2019	3	32	362	9	64	405	12	94	589	6	79	484	20	128	855	15	93	731	13	122	675	7	103	456	29	109	446	0	9	81	114	833	5084
2020	2	30	263	11	52	365	13	77	447	8	70	436	17	112	669	9	96	591	9	104	509	6	81	379	18	90	371	0	3	39	93	715	4069
2021	3	34	316	9	84	392	10	101	541	4	90	460	13	103	749	6	108	577	17	112	568	19	97	412	18	95	393	0	3	34	99	827	4442
2022	1	34	226	9	56	293	7	64	395	8	75	342	8	93	609	12	81	498	7	100	447	8	59	363	11	83	387	0	7	40	71	652	3600

F - Fatality/Life lost, SI - Serious Injury, MI - Minor Injury

**Note:**Changes were made to the Property Damage Only (PDO) definition in 1998, 2003, 2013, 2016 and 2017. Refer to **Scope**, page 5 for full details.

Table 6: Casualties by Sex and Severity, 1995 - 2022

Year	Male			Female			Unknown			ALL PERSONS		
	F	SI	MI	F	SI	MI	F	SI	MI	F	SI	MI
<b>1995</b>	<b>130</b>	<b>967</b>	<b>3233</b>	<b>52</b>	<b>553</b>	<b>3355</b>	<b>0</b>	<b>1</b>	<b>50</b>	<b>182</b>	<b>1521</b>	<b>6638</b>
1996	132	1046	3170	48	669	3571	1	5	34	181	1720	6775
1997	98	947	3173	51	554	3488	0	8	55	149	1509	6716
1998	111	941	3277	55	605	3897	2	20	171	168	1566	7345
1999	96	965	3715	56	613	4192	1	29	164	153	1607	8071
<b>2000</b>	<b>121</b>	<b>981</b>	<b>3914</b>	<b>45</b>	<b>626</b>	<b>4479</b>	<b>0</b>	<b>20</b>	<b>108</b>	<b>166</b>	<b>1627</b>	<b>8501</b>
2001	113	974	3929	41	621	4504	0	8	64	154	1603	8497
2002	117	961	3951	37	574	4426	0	3	5	154	1538	8382
2003	109	914	3596	47	552	3995	0	4	6	156	1470	7597
2004	111	823	3467	28	507	3808	0	1	22	139	1331	7297
<b>2005</b>	<b>108</b>	<b>831</b>	<b>3284</b>	<b>39</b>	<b>464</b>	<b>3320</b>	<b>0</b>	<b>1</b>	<b>25</b>	<b>147</b>	<b>1296</b>	<b>6629</b>
2006	89	873	3082	28	485	3401	0	0	6	117	1358	6489
2007	94	871	3315	31	497	3621	0	0	25	125	1368	6961
2008	74	758	3369	25	459	3794	0	0	11	99	1217	7174
2009	92	702	3182	27	404	3419	0	2	17	119	1108	6618
<b>2010</b>	<b>75</b>	<b>663</b>	<b>3259</b>	<b>43</b>	<b>386</b>	<b>3635</b>	<b>0</b>	<b>1</b>	<b>13</b>	<b>118</b>	<b>1050</b>	<b>6907</b>
2011	76	584	3278	27	348	3610	0	0	8	103	932	6896
2012	72	499	3150	22	262	3464	0	0	10	94	761	6624
2013	68	502	2940	29	288	3338	0	0	12	97	790	6290
2014	76	472	2922	32	239	3239	0	0	2	108	711	6163
<b>2015</b>	<b>66</b>	<b>502</b>	<b>2773</b>	<b>36</b>	<b>256</b>	<b>3021</b>	<b>0</b>	<b>1</b>	<b>6</b>	<b>102</b>	<b>759</b>	<b>5800</b>
2016	56	430	2800	30	262	2975	0	0	12	86	692	5787
2017	80	391	2689	20	231	2816	0	0	10	100	622	5515
<b>2018</b>	<b>80</b>	<b>391</b>	<b>2689</b>	<b>20</b>	<b>231</b>	<b>2816</b>	<b>0</b>	<b>0</b>	<b>10</b>	<b>100</b>	<b>622</b>	<b>5515</b>
<b>2019</b>	<b>86</b>	<b>570</b>	<b>2427</b>	<b>28</b>	<b>263</b>	<b>2640</b>	<b>0</b>	<b>0</b>	<b>17</b>	<b>114</b>	<b>833</b>	<b>5084</b>
<b>2020</b>	<b>67</b>	<b>490</b>	<b>2073</b>	<b>26</b>	<b>225</b>	<b>1983</b>	<b>0</b>	<b>0</b>	<b>13</b>	<b>93</b>	<b>715</b>	<b>4069</b>
<b>2021</b>	<b>76</b>	<b>556</b>	<b>2101</b>	<b>23</b>	<b>271</b>	<b>2327</b>	<b>0</b>	<b>0</b>	<b>14</b>	<b>99</b>	<b>827</b>	<b>4442</b>
<b>2022</b>	<b>53</b>	<b>454</b>	<b>1786</b>	<b>18</b>	<b>198</b>	<b>1802</b>	<b>0</b>	<b>0</b>	<b>12</b>	<b>71</b>	<b>652</b>	<b>3600</b>

F - Fatality/Life lost, SI - Serious Injury, MI - Minor Injury

**Note:**

Changes were made to the Property Damage Only (PDO) definition in 1998, 2003, 2013, 2016 and 2017. Refer to **Scope**, page 5 for full details.



Table 7: Crashes and Casualties by Region<sup>1</sup> and Severity, 1995 - 2022

Year	Metropolitan Adelaide <sup>1</sup>									Rural South Australia <sup>1</sup>								
	Crashes					Casualties				Crashes					Casualties			
	Fatal Crashes	Serious Injury Crashes	Minor Injury Crashes	Property Damage Crashes	ALL CRASHES	Fatalities	Serious Injuries	Minor Injuries	ALL CASUALTIES	Fatal Crashes	Serious Injury Crashes	Minor Injury Crashes	Property Damage Crashes	ALL CRASHES	Fatalities	Serious Injuries	Minor Injuries	ALL CASUALTIES
1995	77	677	4120	27726	32600	77	817	5152	6046	87	509	978	5122	6696	105	704	1486	2295
1996	68	700	4031	27232	32031	73	861	5206	6140	94	625	991	5194	6904	108	860	1568	2536
1997	52	665	4199	27194	32110	55	800	5294	6149	72	504	928	5231	6735	94	711	1410	2215
1998	65	698	4579	27285	32627	70	855	5868	6793	87	527	970	5360	6944	98	710	1474	2282
1999	56	674	5091	28790	34611	61	830	6618	7509	76	564	956	5499	7095	92	777	1454	2323
2000	63	681	5423	28055	34222	68	842	6983	7893	88	548	1009	5117	6762	98	785	1516	2399
2001	64	647	5369	27988	34068	67	768	6950	7785	73	598	983	5051	6705	87	835	1548	2470
2002	49	621	5218	27582	33470	54	754	6743	7551	89	578	1031	4942	6640	100	784	1639	2523
2003	57	585	4839	19316	24797	62	731	6188	6981	78	584	947	3902	5511	94	739	1409	2242
2004	61	577	4583	12713	17934	64	692	5903	6659	67	494	938	2835	4334	75	639	1394	2108
2005	47	513	4212	12225	16997	51	620	5300	5971	79	481	894	2720	4174	96	676	1329	2101
2006	50	619	4146	11919	16734	54	730	5159	5943	54	473	863	2594	3984	63	628	1330	2021
2007	45	614	4380	12504	17543	49	722	5565	6336	63	476	915	2726	4180	76	646	1396	2118
2008	40	557	4643	12516	17756	44	649	5766	6459	47	439	972	2707	4165	55	568	1408	2031
2009	36	494	4287	12640	17457	41	565	5314	5920	68	414	926	2866	4274	78	543	1304	1925
2010	44	478	4505	12971	17998	45	531	5632	6208	61	408	919	2906	4294	73	519	1275	1867
2011	41	419	4572	14088	19120	42	472	5603	6117	54	362	899	2883	4198	61	460	1293	1814
2012	29	347	4464	13915	18755	31	384	5378	5793	57	290	913	2814	4074	63	377	1246	1686
2013	41	394	4379	9242	14056	43	459	5375	5877	48	272	658	1641	2619	54	331	915	1300
2014	37	346	4328	8920	13631	38	376	5203	5617	59	248	677	1549	2533	70	335	960	1365
2015	43	391	3916	8613	12963	43	428	4800	5271	53	266	700	1450	2469	59	331	1000	1390
2016	32	339	3881	9886	14138	34	382	4762	5178	45	235	681	1676	2637	52	310	1025	1387
2017	54	322	3703	6977	11056	56	359	4583	4998	39	211	671	1260	2181	44	263	932	1239
2018	24	284	3758	7466	11532	24	323	4572	4919	51	201	635	1180	2067	56	253	896	1205
2019	49	504	3393	7121	11067	49	553	4294	4896	61	225	544	1067	1897	65	280	790	1135
2020	36	428	2773	6531	9768	38	471	3391	3900	49	196	486	1035	1766	55	244	678	977
2021	40	523	3021	7586	11170	40	587	3731	4358	54	193	525	1207	1979	59	240	711	1010
2022	31	338	2444	7568	10381	32	373	2974	3379	37	237	462	1238	1974	39	279	626	944

<sup>1</sup> From 2013 onwards, regional boundaries have been adjusted to the ABS Greater Adelaide Statistical Division - For more information please look at *Preface* and *Definitions & Explanatory Notes*.

**Note:**

Changes were made to the Property Damage Only (PDO) definition in 1998, 2003, 2013, 2016 and 2017. Refer to *Scope*, page 5 for full details.

# Road Crashes in 2022

---

- Time Distribution
- Crash Types
- Definition for Coding Accidents
- Crash Location
- Top Intersections
- Motor Vehicle Types
- Involvement and Responsibility
- Speed

Table 8: Crashes and Casualties during Holiday Periods by Severity

Period	Crashes				Casualties				
	Fatal Crashes	Serious Injury Crashes	Minor Injury Crashes	Property Damage Crashes	ALL CRASHES	Fatalities	Serious Injuries	Minor Injuries	ALL CASUALTIES
New Year (1 January) (1 Day)	0	2	4	12	18	0	2	10	12
Australia Day Weekend (26 January - 26 January) (1 Days)	1	0	9	12	22	1	0	12	13
Adelaide Cup (12 March - 14 March) (3 Days)	0	6	31	49	86	0	6	38	44
Easter (15 April - 18 April) (4 Days)	0	5	23	58	86	0	7	34	41
Anzac Day Public Holiday (25 April) (1 Day)	0	1	7	11	19	0	1	8	9
Queen's Birthday (11 June - 13 June) (3 Days)	1	6	10	43	60	1	7	12	20
Labour Day (1 October - 3 October) (3 Days)	1	5	18	47	71	1	5	25	31
Christmas Period (24 December - 31 December) (8 Days)	2	15	44	134	195	4	16	56	76
<b>SCHOOL HOLIDAYS</b>									
January (1 January - 26 January) (26 Days)	3	50	157	483	693	3	56	214	273
April (15 April - 1 May) (17 Days)	5	18	125	361	509	5	22	154	181
July (9 July - 24 July) (16 Days)	3	16	110	347	476	3	25	153	181
September (1 September - 16 October) (16 Days)	2	22	113	377	514	2	24	136	162
December (11 December - 31 December) (21 Days)	3	51	149	455	658	5	55	206	266

Table 9a: Casualty Crashes by Time of Day, Day of Week

Time Period	Day of Week							TOTAL
	Monday	Tuesday	Wednesday	Thursday	Friday	Saturday	Sunday	
00:00 - 01:59	1	7	1	6	8	12	22	57
02:00 - 03:59	5	4	4	2	7	10	8	40
04:00 - 05:59	5	11	7	6	4	8	8	49
06:00 - 07:59	41	49	53	42	52	21	17	275
08:00 - 09:59	69	76	99	78	62	44	22	450
10:00 - 11:59	56	60	65	59	54	62	62	418
12:00 - 13:59	54	57	45	61	60	67	61	405
14:00 - 15:59	93	105	79	98	88	52	70	585
16:00 - 17:59	73	78	105	121	98	70	40	585
18:00 - 19:59	41	63	47	66	58	49	25	349
20:00 - 21:59	29	28	27	25	37	37	31	214
22:00 - 23:59	9	23	9	14	27	24	16	122
<b>TOTAL</b>	<b>476</b>	<b>561</b>	<b>541</b>	<b>578</b>	<b>555</b>	<b>456</b>	<b>382</b>	<b>3549</b>

Figure 3: Casualty Crashes by Time of Day, Day of Week

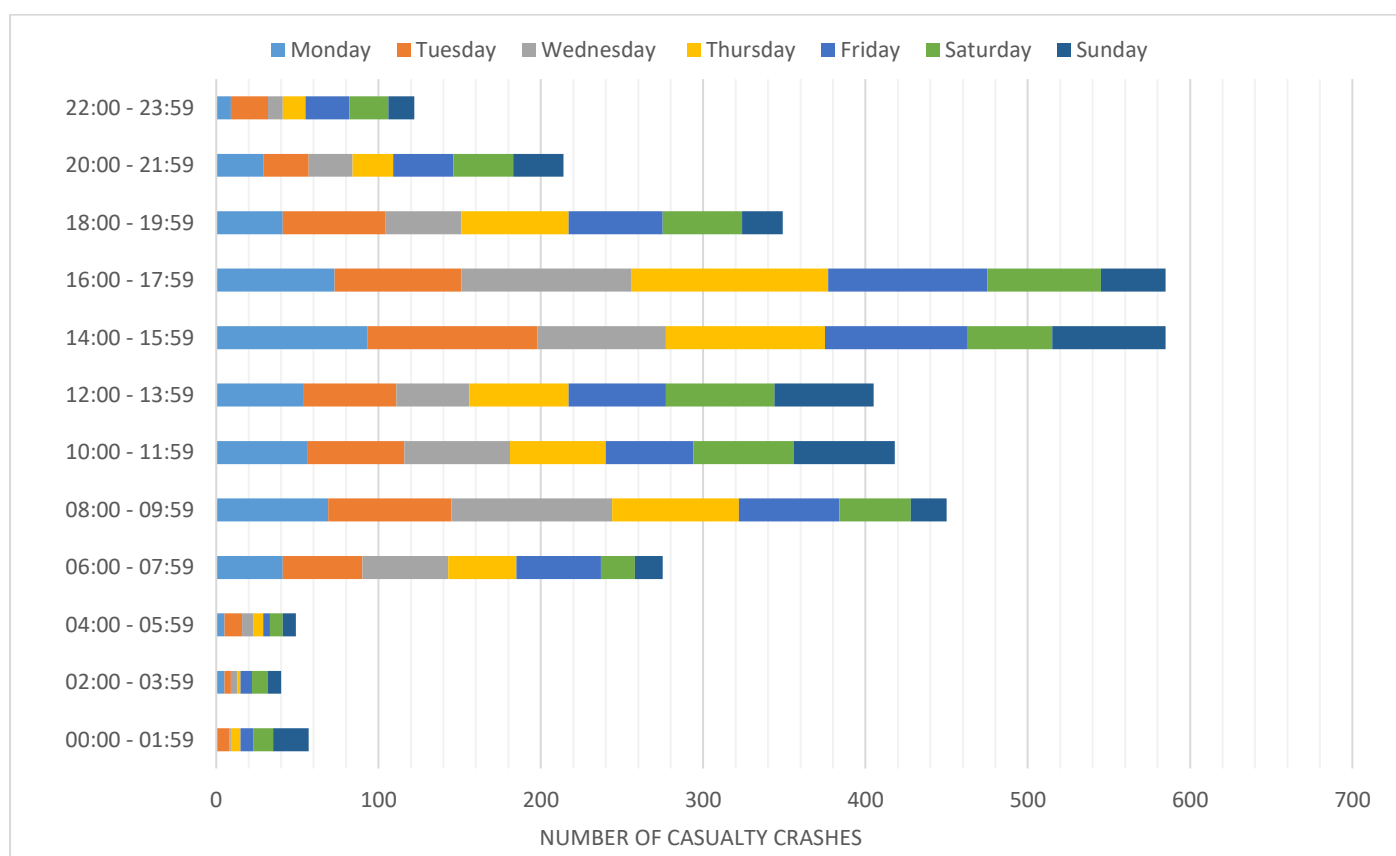


Table 9b: Casualties by Time of Day, Day of Week

Time Period	Day of Week							TOTAL
	Monday	Tuesday	Wednesday	Thursday	Friday	Saturday	Sunday	
00:00 - 01:59	1	11	1	6	8	19	28	74
02:00 - 03:59	6	4	6	4	12	13	8	53
04:00 - 05:59	6	13	8	6	4	8	8	53
06:00 - 07:59	49	53	65	48	55	22	25	317
08:00 - 09:59	84	84	117	96	67	49	27	524
10:00 - 11:59	66	84	82	64	60	74	77	507
12:00 - 13:59	65	72	55	80	76	83	74	505
14:00 - 15:59	110	124	93	127	113	64	104	735
16:00 - 17:59	81	101	117	149	122	83	60	713
18:00 - 19:59	48	84	53	78	74	59	28	424
20:00 - 21:59	33	43	29	31	48	43	45	272
22:00 - 23:59	9	28	11	16	36	28	18	146
<b>TOTAL</b>	<b>558</b>	<b>701</b>	<b>637</b>	<b>705</b>	<b>675</b>	<b>545</b>	<b>502</b>	<b>4323</b>

Table 9c: All Crashes by Time of Day, Day of Week

Time Period	Day of Week							TOTAL
	Monday	Tuesday	Wednesday	Thursday	Friday	Saturday	Sunday	
00:00 - 01:59	19	30	19	25	33	68	68	262
02:00 - 03:59	15	16	21	17	21	29	37	156
04:00 - 05:59	35	35	32	27	27	28	41	225
06:00 - 07:59	161	156	182	164	166	77	65	971
08:00 - 09:59	236	277	292	281	239	120	74	1519
10:00 - 11:59	182	176	205	198	202	225	160	1348
12:00 - 13:59	203	201	216	199	233	224	194	1470
14:00 - 15:59	292	297	286	318	339	214	194	1940
16:00 - 17:59	275	340	352	407	356	220	139	2089
18:00 - 19:59	135	164	164	198	217	156	120	1154
20:00 - 21:59	75	87	106	115	123	136	103	745
22:00 - 23:59	44	59	57	63	95	99	59	476
<b>TOTAL</b>	<b>1672</b>	<b>1838</b>	<b>1932</b>	<b>2012</b>	<b>2051</b>	<b>1596</b>	<b>1254</b>	<b>12355</b>

Table 10: Crashes and Casualties by Month of Year and Severity

Month	Crashes				ALL CRASHES	Casualties			
	Fatal Crashes	Serious Injury Crashes	Minor Injury Crashes	Property Damage Crashes		Fatalities	Serious Injuries	Minor Injuries	ALL CASUALTIES
January	4	55	179	576	814	4	61	244	309
February	8	49	238	639	934	8	52	286	346
March	5	47	307	686	1045	5	52	378	435
April	9	37	220	690	956	9	42	269	320
May	6	58	285	826	1175	7	61	329	397
June	5	44	245	767	1061	5	52	296	353
July	5	40	211	737	993	5	57	273	335
August	5	49	232	809	1095	5	60	280	345
September	7	53	252	754	1066	7	61	321	389
October	3	39	251	767	1060	3	43	304	350
November	5	33	249	810	1097	5	36	311	352
December	6	71	237	745	1059	8	75	309	392
<b>TOTAL</b>	<b>68</b>	<b>575</b>	<b>2906</b>	<b>8806</b>	<b>12355</b>	<b>71</b>	<b>652</b>	<b>3600</b>	<b>4323</b>

Table 11a: Crashes and Casualties by Crash Type and Severity:  
Metropolitan Adelaide

	Crashes					Casualties			
	Fatal Crashes	Serious Injury Crashes	Minor Injury Crashes	Property Damage Crashes	ALL CRASHES	Fatalities	Serious Injuries	Minor Injuries	ALL CASUALTIES
<b>MULTI VEHICLE</b>									
Head On	0	14	40	83	137	0	15	59	74
Rear End	3	36	745	1973	2757	3	46	901	950
Side Swipe	0	21	148	933	1102	0	24	174	198
Right Angle	6	53	562	1546	2167	6	55	716	777
Right Turn	1	22	312	703	1038	1	25	418	444
Hit Parked Vehicle	0	15	99	828	942	0	16	108	124
<b>Sub-total</b>	<b>10</b>	<b>161</b>	<b>1906</b>	<b>6066</b>	<b>8143</b>	<b>10</b>	<b>181</b>	<b>2376</b>	<b>2567</b>
<b>SINGLE VEHICLE</b>									
Hit Fixed Object	11	81	270	1135	1497	12	95	317	424
Hit Pedestrian	5	60	132	141	338	5	60	136	201
Hit Animal	0	2	9	40	51	0	2	12	14
Hit Object on Road	1	2	6	31	40	1	2	7	10
Roll Over	4	30	105	59	198	4	31	110	145
Left Road Out of Control	0	0	9	35	44	0	0	9	9
Other	0	2	7	61	70	0	2	7	9
<b>Sub -total</b>	<b>21</b>	<b>177</b>	<b>538</b>	<b>1502</b>	<b>2238</b>	<b>22</b>	<b>192</b>	<b>598</b>	<b>812</b>
<b>TOTAL</b>	<b>31</b>	<b>338</b>	<b>2444</b>	<b>7568</b>	<b>10381</b>	<b>32</b>	<b>373</b>	<b>2974</b>	<b>3379</b>

Table 11b: Crashes and Casualties by Crash Type and Severity:  
Rural

	Crashes					Casualties			
	Fatal Crashes	Serious Injury Crashes	Minor Injury Crashes	Property Damage Crashes	ALL CRASHES	Fatalities	Serious Injuries	Minor Injuries	ALL CASUALTIES
<b>MULTI VEHICLE</b>									
Head On	3	20	21	35	79	3	31	41	75
Rear End	0	10	39	126	175	0	11	52	63
Side Swipe	1	10	16	90	117	1	11	18	30
Right Angle	5	25	70	225	325	5	33	105	143
Right Turn	1	5	13	32	51	1	7	29	37
Hit Parked Vehicle	1	5	18	71	95	1	6	21	28
<b>Sub-total</b>	<b>11</b>	<b>75</b>	<b>177</b>	<b>579</b>	<b>842</b>	<b>11</b>	<b>99</b>	<b>266</b>	<b>376</b>
<b>SINGLE VEHICLE</b>									
Hit Fixed Object	12	72	125	367	576	14	77	159	250
Hit Pedestrian	3	8	15	11	37	3	8	16	27
Hit Animal	1	5	16	79	101	1	7	21	29
Hit Object on Road	0	1	2	12	15	0	1	2	3
Roll Over	10	73	111	146	340	10	83	145	238
Left Road Out of Control	0	2	11	24	37	0	3	12	15
Other	0	1	5	20	26	0	1	5	6
<b>Sub-total</b>	<b>26</b>	<b>162</b>	<b>285</b>	<b>659</b>	<b>1132</b>	<b>28</b>	<b>180</b>	<b>360</b>	<b>568</b>
<b>TOTAL</b>	<b>37</b>	<b>237</b>	<b>462</b>	<b>1238</b>	<b>1974</b>	<b>39</b>	<b>279</b>	<b>626</b>	<b>944</b>

Table 11c: Crashes and Casualties by Crash Type and Severity:  
South Australia

	Crashes				Casualties				
	Fatal Crashes	Serious Injury Crashes	Minor Injury Crashes	Property Damage Crashes	ALL CRASHES	Fatalities	Serious Injuries	Minor Injuries	ALL CASUALTIES
<b>MULTI VEHICLE</b>									
Head On	3	34	61	118	216	3	46	100	149
Rear End	3	46	784	2099	2932	3	57	953	1013
Side Swipe	1	31	164	1023	1219	1	35	192	228
Right Angle	11	78	632	1771	2492	11	88	821	920
Right Turn	2	27	325	735	1089	2	32	447	481
Hit Parked Vehicle	1	20	117	899	1037	1	22	129	152
<b>Sub-total</b>	<b>21</b>	<b>236</b>	<b>2083</b>	<b>6645</b>	<b>8985</b>	<b>21</b>	<b>280</b>	<b>2642</b>	<b>2943</b>
<b>SINGLE VEHICLE</b>									
Hit Fixed Object	23	153	395	1502	2073	26	172	476	674
Hit Pedestrian	8	68	147	152	375	8	68	152	228
Hit Animal	1	7	25	119	152	1	9	33	43
Hit Object on Road	1	3	8	43	55	1	3	9	13
Roll Over	14	103	216	205	538	14	114	255	383
Left Road Out of Control	0	2	20	59	81	0	3	21	24
Other	0	3	12	81	96	0	3	12	15
<b>Sub-total</b>	<b>47</b>	<b>339</b>	<b>823</b>	<b>2161</b>	<b>3370</b>	<b>50</b>	<b>372</b>	<b>958</b>	<b>1380</b>
<b>TOTAL</b>	<b>68</b>	<b>575</b>	<b>2906</b>	<b>8806</b>	<b>12355</b>	<b>71</b>	<b>652</b>	<b>3600</b>	<b>4323</b>

Table 12: Hit Fixed Object Crashes by Object First Hit and Severity

Type of Fixed Object	Fatal Crashes	Serious Injury Crashes	Minor Injury Crashes	Property Damage Crashes	ALL CRASHES
Tree	15	74	172	475	736
Traffic Signal Pole	0	2	8	45	55
Pole - not Stobie	3	5	8	94	110
Bridge	0	0	0	2	2
Sign Post	0	7	14	65	86
Stobie Pole	0	21	53	139	213
Other Fixed Obstruction	4	34	106	535	679
Guard Rail	1	9	29	117	156
Wire Rope barrier	0	1	5	30	36
<b>TOTAL</b>	<b>23</b>	<b>153</b>	<b>395</b>	<b>1502</b>	<b>2073</b>

Table 13: Single Vehicle Crashes by Motor Vehicle Type and Severity

Type of Vehicle	Fatal Crashes	Serious Injury Crashes	Minor Injury Crashes	Property Damage Crashes	ALL CRASHES
Passenger Vehicle	34	228	628	1902	2792
Light Truck ( $\leq$ 4.5 tonnes)	0	0	6	7	13
Heavy Vehicle	5	15	23	187	230
Buses	0	0	2	12	14
Motorcycles	7	81	113	47	248
Bicycles	1	14	42	5	62
Other/E-Scooter	0	1	9	1	11
<b>TOTAL</b>	<b>47</b>	<b>339</b>	<b>823</b>	<b>2161</b>	<b>3370</b>

Figure 4: Definition for Coding Accidents (DCA)<sup>1</sup>

<b>Pedestrian on foot in toy/pram</b>	<b>Vehicles from adjacent directions (intersections only)</b>	<b>Vehicles from opposing directions</b>	<b>Vehicles from same direction</b>	<b>Manoeuvring</b>	<b>Overtaking</b>	<b>On path</b>	<b>Off path on straight</b>	<b>Off path on curve</b>	<b>Passenger and miscellaneous</b>
100 A Xh C A B M/B C	110 A B CROSS TRAFFIC	120 A B HEAD ON (NOT OVERTAKING)	130 A B VEHICLES IN SAME DIRECTION	140 A B U TURN	150 A B HEAD ON (INCL SIDE SWIPE)	160 A B PARKED	170 A B OFF CARRIAGEWAY	180 A B OFF CARRIAGEWAY	190 A B FELL FROM VEHICLE
101 A Xh A B C D M/B D	111 A B RIGHT FAR	121 A B RIGHT THRU	131 A B LEFT REAR	141 A B U TURN INTO FINED OBJECT/PARKED VEHICLE	151 A B OUT OF CONTROL	161 A B DOUBLE PARKED	171 A B LEFT OFF CARRIAGEWAY INTO OFF-PARKED VEHICLE	181 A B OFF RIGHT BEND INTO OBJECT/PARKED VEHICLE	191 A B LOAD OR MISSILE STRUCK VEHICLE
102 A Xh A B C D M/B C D	112 A B LEFT FAR	122 A B LEFT THRU	132 A B RIGHT END	142 A B LEAVING PARKING	152 A B PULLING OUT	162 A B ACCIDENT OR BROKEN DOWN	172 A B OFF CARRIAGEWAY TOLL	182 A B OFF CARRIAGEWAY LEFT BEND	192 A B STRUCK TRAIN
103 A E Playing, walking, wiring, standing on carriageway	113 A B RIGHT NEAR	123 A B RIGHT LEFT	133 A B LANE SIDE SWIPE	143 A B ENTERING PARKING	153 A B CUTTING IN	163 A B VEHICLE DOOR	173 A B RIGHT OFF CARRIAGEWAY INTO OBJECT/PARKED VEHICLE	183 A B OFF LEFT BEND INTO OBJECT/PARKED VEHICLE	193 A B STRUCK RAILWAY CROSSING FURNITURE
104 A F WALKING WITH TRAFFIC	114 A B TWO RIGHT TURNING	124 A B RIGHT RIGHT	134 A B LANE CHANGE RIGHT (OUT OF STRIKING)	144 A B PARKING VEHICLES ONLY	154 A B PULLING OUT - REAR END	164 A B REMANENT OBSTRUCTION ON CARRIAGEWAY	174 A B OUT OF CONTROL ON CARRIAGEWAY	184 A B OUT OF CONTROL ON CARRIAGEWAY	194 A B PARKED CAR RUN AWAY
105 A F FACING TRAFFIC	115 A B RIGHT LEFT FAR	125 A B LEFT LEFT	135 A B LANE CHANGE LEFT	145 A B REVERSING	155 A B OFF END OF ROAD/INT. INTERSECTION	165 A B TEMPORARY ROADWORKS	175 A B OFF END OF ROAD/INT. INTERSECTION	185 A B OUT OF CONTROL ON CARRIAGEWAY	195 A B DANGER AND TREE
106 A G ON FOOTPATH/MEDIAN	116 A B LEFT NEAR	126 A B RIGHT THRU	136 A B RIGHT TURN SIDE SWIPE	146 A B REVERSING INTO FINED OBJECT/VEHICLE INCLUDES DRIVEWAYS	156 A B OFF CARRIAGEWAY UNKNOWN SIDE	166 A B STRUCK OBJECT ON CARRIAGEWAY	176 A B OFF CARRIAGEWAY UNKNOWN SIDE	186 A B OUT OF CONTROL ON CARRIAGEWAY	196 A B DANGER AND TREE
107 A FHI DEW/SLIP	117 A B RIGHT LEFT NEAR	127 A B RIGHT LEFT	137 A B LEFT TURN SIDE SWIPE	147 A B EMERGING FROM DRIVEWAY/LANE	157 A B ANIMAL (NOT RIDGEM)	167 A B ANIMAL (NOT RIDGEM)	177 A B OFF CARRIAGEWAY UNKNOWN SIDE	187 A B OUT OF CONTROL ON CARRIAGEWAY	197 A B DANGER AND TREE
108 A J D STRUCK WHILE BOARDING OR ALIGHTING VEHICLE	118 A B TWO LEFT TURN	128 A B OTHER CROSSING	138 A B OTHER SAME DIRECTION	148 A B OTHER MANOEUVRING	158 A B OTHER OVERTAKING	168 A B OTHER ON PATH	178 A B OTHER STRAIGHT	188 A B OTHER CURVE	198 A B DANGER AND TREE
109 A B C D BOMBING & STRUCK BY SAME CLASS INCLUDES WORKVANS/ PUSHING VEHICLE	119 A B OTHER ADJACENT	129 A B OTHER CROSSING	139 A B OTHER SAME DIRECTION	149 A B OTHER MANOEUVRING	159 A B OTHER OVERTAKING	169 A B OTHER ON PATH	179 A B OTHER STRAIGHT	189 A B OTHER CURVE	199 A B UNKNOWN

<sup>1</sup> Definition for Coding Accidents – For more information please see Preface and Definitions & Explanatory Notes.



Table 14a: Crashes and Casualties by Crash Code Type: Metro Adelaide

Crash Code Type (DCA) <sup>1</sup>	Crashes					Casualties			
	Fatal Crashes	Serious Injury Crashes	Minor Injury Crashes	Property Damage Crashes	ALL CRASHES	Fatalities	Serious Injuries	Minor Injuries	ALL CASUALTIES
<b>PEDESTRIANS</b>									
100	2	15	54	63	134	2	15	55	72
101	0	2	6	4	12	0	2	7	9
102	0	29	35	29	93	0	29	36	65
103	2	2	6	9	19	2	2	6	10
104	0	1	3	5	9	0	1	3	4
105	0	0	1	2	3	0	0	1	1
106	0	2	6	3	11	0	2	6	8
107	1	5	9	16	31	1	5	9	15
108	0	1	0	3	4	0	1	1	2
109	0	4	13	8	25	0	4	14	18
<b>Sub-total</b>	<b>5</b>	<b>61</b>	<b>133</b>	<b>142</b>	<b>341</b>	<b>5</b>	<b>61</b>	<b>138</b>	<b>204</b>
<b>ADJ DIRECTIONS</b>									
110	1	14	176	360	551	1	14	256	271
111	0	1	49	173	223	0	1	56	57
112	0	0	3	16	19	0	0	3	3
113	2	21	163	509	695	2	23	207	232
114	0	0	8	25	33	0	0	10	10
115	0	0	2	18	20	0	0	2	2
116	0	4	45	141	190	0	4	51	55
117	0	0	0	1	1	0	0	0	0
118	0	0	0	3	3	0	0	0	0
119	0	1	4	11	16	0	1	4	5
<b>Sub-total</b>	<b>3</b>	<b>41</b>	<b>450</b>	<b>1257</b>	<b>1751</b>	<b>3</b>	<b>43</b>	<b>589</b>	<b>635</b>
<b>OPP DIRECTIONS</b>									
120	0	14	40	85	139	0	15	60	75
121	0	22	295	681	998	0	25	400	425
122	0	0	0	1	1	0	0	0	0
123	0	0	5	17	22	0	0	6	6
124	0	0	2	2	4	0	0	2	2
125	0	0	0	0	0	0	0	0	0
129	0	1	2	0	3	0	1	2	3
<b>Sub-total</b>	<b>0</b>	<b>37</b>	<b>344</b>	<b>786</b>	<b>1167</b>	<b>0</b>	<b>41</b>	<b>470</b>	<b>511</b>
<b>SAME DIRECTION</b>									
130	3	29	577	1579	2188	3	39	709	751
131	0	2	81	165	248	0	2	86	88
132	0	4	84	177	265	0	4	106	110
133	0	2	6	116	124	0	4	12	16
134	0	1	29	203	233	0	1	36	37
135	0	3	31	248	282	0	3	37	40
136	0	1	9	47	57	0	1	9	10
137	0	3	22	94	119	0	3	22	25
139	0	0	1	6	7	0	0	1	1
<b>Sub-total</b>	<b>3</b>	<b>45</b>	<b>840</b>	<b>2635</b>	<b>3523</b>	<b>3</b>	<b>57</b>	<b>1018</b>	<b>1078</b>
<b>MANOEUVERING</b>									
140	1	6	41	120	168	1	7	47	55
141	0	0	4	46	50	0	0	4	4
142	0	0	7	55	62	0	0	7	7
143	0	0	0	12	12	0	0	0	0
144	0	0	1	28	29	0	0	1	1
145	0	0	3	45	48	0	0	3	3

<sup>1</sup> Crash Code Type (DCA) - Refer to Figure 4

Table 14a: Crashes and Casualties by Crash Code Type: Metro Adelaide (cont.)

Crash Code Type (DCA) <sup>1</sup>	Crashes					Casualties			
	Fatal Crashes	Serious Injury Crashes	Minor Injury Crashes	Property Damage Crashes	ALL CRASHES	Fatalities	Serious Injuries	Minor Injuries	ALL CASUALTIES
146	0	2	6	67	75	0	2	6	8
147	2	5	80	204	291	2	5	92	99
148	1	8	28	38	75	1	8	30	39
149	0	1	15	34	50	0	1	16	17
<b>Sub-total</b>	<b>4</b>	<b>22</b>	<b>185</b>	<b>649</b>	<b>860</b>	<b>4</b>	<b>23</b>	<b>206</b>	<b>233</b>
<b>OVERTAKING</b>									
150	0	0	2	1	3	0	0	2	2
151	1	2	1	6	10	1	2	1	4
152	0	1	8	29	38	0	1	9	10
153	0	0	1	4	5	0	0	1	1
154	0	0	1	2	3	0	0	1	1
159	0	3	8	37	48	0	3	9	12
<b>Sub-total</b>	<b>1</b>	<b>6</b>	<b>21</b>	<b>79</b>	<b>107</b>	<b>1</b>	<b>6</b>	<b>23</b>	<b>30</b>
<b>ON PATH</b>									
160	0	10	64	600	674	0	10	69	79
161	0	0	0	0	0	0	0	0	0
162	0	0	2	3	5	0	0	2	2
163	0	2	14	30	46	0	2	14	16
164	0	0	0	26	26	0	0	0	0
165	1	1	0	2	4	1	1	1	3
166	0	1	6	34	41	0	1	6	7
167	0	2	9	40	51	0	2	12	14
169	0	2	9	92	103	0	3	9	12
<b>Sub-total</b>	<b>1</b>	<b>18</b>	<b>104</b>	<b>827</b>	<b>950</b>	<b>1</b>	<b>19</b>	<b>113</b>	<b>133</b>
<b>OFF PATH, STRAIGHT</b>									
170	0	5	7	6	18	0	5	7	12
171	1	27	90	369	487	1	29	107	137
172	0	0	2	9	11	0	0	2	2
173	4	16	39	228	287	4	21	46	71
174	0	10	58	28	96	0	10	60	70
175	1	2	5	23	31	1	2	7	10
176	1	6	27	77	111	1	7	29	37
179	0	0	2	7	9	0	0	2	2
<b>Sub-total</b>	<b>7</b>	<b>66</b>	<b>230</b>	<b>747</b>	<b>1050</b>	<b>7</b>	<b>74</b>	<b>260</b>	<b>341</b>
<b>OFF PATH, CURVE</b>									
180	0	2	10	12	24	0	2	10	12
181	4	17	49	189	259	4	20	59	83
182	1	3	8	13	25	1	4	10	15
183	2	11	42	154	209	3	14	50	67
184	0	7	16	3	26	0	7	16	23
189	0	0	0	0	0	0	0	0	0
<b>Sub-total</b>	<b>7</b>	<b>40</b>	<b>125</b>	<b>371</b>	<b>543</b>	<b>8</b>	<b>47</b>	<b>145</b>	<b>200</b>
<b>MISCELLANEOUS</b>									
190	0	2	3	0	5	0	2	3	5
191	0	0	2	45	47	0	0	2	2
192	0	0	1	1	2	0	0	1	1
193	0	0	0	3	3	0	0	0	0
194	0	0	6	16	22	0	0	6	6
199	0	0	0	10	10	0	0	0	0
<b>Sub-total</b>	<b>0</b>	<b>2</b>	<b>12</b>	<b>75</b>	<b>89</b>	<b>0</b>	<b>2</b>	<b>12</b>	<b>14</b>
<b>TOTAL</b>	<b>31</b>	<b>338</b>	<b>2444</b>	<b>7568</b>	<b>10381</b>	<b>32</b>	<b>373</b>	<b>2974</b>	<b>3379</b>

<sup>1</sup> Crash Code Type (DCA) - Refer to Figure 4

Table 14b: Crashes and Casualties by Crash Code Type: Rural

Crash Code Type (DCA) <sup>1</sup>	Crashes					Casualties			
	Fatal Crashes	Serious Injury Crashes	Minor Injury Crashes	Property Damage Crashes	ALL CRASHES	Fatalities	Serious Injuries	Minor Injuries	ALL CASUALTIES
<b>PEDESTRIANS</b>									
100	0	1	5	3	9	0	1	5	6
101	1	0	1	1	3	1	0	1	2
102	0	0	0	4	4	0	0	0	0
103	1	2	1	0	4	1	2	3	6
104	0	1	0	0	1	0	1	0	1
105	0	0	0	0	0	0	0	0	0
106	0	2	1	0	3	0	2	1	3
107	0	2	1	2	5	0	2	1	3
108	0	1	0	0	1	0	1	0	1
109	1	0	6	1	8	1	0	6	7
<b>Sub-total</b>	<b>3</b>	<b>9</b>	<b>15</b>	<b>11</b>	<b>38</b>	<b>3</b>	<b>9</b>	<b>17</b>	<b>29</b>
<b>ADJ DIRECTIONS</b>									
110	0	6	35	83	124	0	7	54	61
111	0	2	5	19	26	0	2	5	7
112	0	0	0	3	3	0	0	0	0
113	4	10	16	50	80	4	17	26	47
114	0	1	1	6	8	0	1	1	2
115	0	0	0	3	3	0	0	0	0
116	0	3	6	23	32	0	3	12	15
117	0	0	0	0	0	0	0	0	0
118	0	0	0	1	1	0	0	0	0
119	0	0	0	4	4	0	0	0	0
<b>Sub-total</b>	<b>4</b>	<b>22</b>	<b>63</b>	<b>192</b>	<b>281</b>	<b>4</b>	<b>30</b>	<b>98</b>	<b>132</b>
<b>OPP DIRECTIONS</b>									
120	3	20	21	33	77	3	30	41	74
121	1	5	13	30	49	1	7	28	36
122	0	0	0	0	0	0	0	0	0
123	0	0	0	0	0	0	0	0	0
124	0	0	0	0	0	0	0	0	0
125	0	0	0	0	0	0	0	0	0
129	0	0	0	0	0	0	0	0	0
<b>Sub-total</b>	<b>4</b>	<b>25</b>	<b>34</b>	<b>63</b>	<b>126</b>	<b>4</b>	<b>37</b>	<b>69</b>	<b>110</b>
<b>SAME DIRECTION</b>									
130	0	4	16	64	84	0	5	17	22
131	0	1	4	11	16	0	1	5	6
132	0	5	18	43	66	0	5	29	34
133	0	3	1	15	19	0	3	1	4
134	0	0	1	13	14	0	0	1	1
135	0	0	0	5	5	0	0	0	0
136	0	0	1	3	4	0	0	1	1
137	0	0	0	4	4	0	0	0	0
139	0	0	0	1	1	0	0	0	0
<b>Sub-total</b>	<b>0</b>	<b>13</b>	<b>41</b>	<b>159</b>	<b>213</b>	<b>0</b>	<b>14</b>	<b>54</b>	<b>68</b>
<b>MANOEUVERING</b>									
140	0	4	5	14	23	0	4	7	11
141	0	0	0	6	6	0	0	0	0
142	0	0	1	7	8	0	0	1	1
143	0	0	0	2	2	0	0	0	0
144	0	0	1	7	8	0	0	1	1
145	0	0	1	6	7	0	0	1	1

<sup>1</sup> Crash Code Type (DCA) - Refer to Figure 4

Table 14b: Crashes and Casualties by Crash Code Type: Rural (cont.)

Crash Code Type (DCA) <sup>1</sup>	Crashes					Casualties			
	Fatal Crashes	Serious Injury Crashes	Minor Injury Crashes	Property Damage Crashes	ALL CRASHES	Fatalities	Serious Injuries	Minor Injuries	ALL CASUALTIES
146	0	0	0	8	8	0	0	0	0
147	0	2	4	25	31	0	2	4	6
148	0	0	0	5	5	0	0	0	0
149	0	6	3	11	20	0	7	7	14
<b>Sub-total</b>	<b>0</b>	<b>12</b>	<b>15</b>	<b>91</b>	<b>118</b>	<b>0</b>	<b>13</b>	<b>21</b>	<b>34</b>
<b>OVERTAKING</b>									
150	1	0	1	3	5	1	1	2	4
151	0	0	3	5	8	0	0	3	3
152	1	4	7	12	24	1	5	8	14
153	0	0	0	3	3	0	0	0	0
154	0	0	0	1	1	0	0	0	0
159	0	0	2	14	16	0	0	2	2
<b>Sub-total</b>	<b>2</b>	<b>4</b>	<b>13</b>	<b>38</b>	<b>57</b>	<b>2</b>	<b>6</b>	<b>15</b>	<b>23</b>
<b>ON PATH</b>									
160	1	2	14	44	61	1	3	14	18
161	0	0	0	0	0	0	0	0	0
162	0	0	1	1	2	0	0	1	1
163	0	0	0	1	1	0	0	0	0
164	0	2	0	4	6	0	2	0	2
165	0	0	0	4	4	0	0	0	0
166	0	1	2	10	13	0	1	2	3
167	0	5	16	79	100	0	7	21	28
169	0	1	4	8	13	0	1	6	7
<b>Sub-total</b>	<b>1</b>	<b>11</b>	<b>37</b>	<b>151</b>	<b>200</b>	<b>1</b>	<b>14</b>	<b>44</b>	<b>59</b>
<b>OFF PATH, STRAIGHT</b>									
170	1	3	4	14	22	1	6	4	11
171	4	11	26	86	127	4	12	32	48
172	0	3	5	10	18	0	3	7	10
173	6	15	20	59	100	8	17	26	51
174	1	23	23	35	82	1	24	26	51
175	0	0	8	9	17	0	0	9	9
176	0	22	60	101	183	0	24	77	101
179	0	0	2	3	5	0	0	2	2
<b>Sub-total</b>	<b>12</b>	<b>77</b>	<b>148</b>	<b>317</b>	<b>554</b>	<b>14</b>	<b>86</b>	<b>183</b>	<b>283</b>
<b>OFF PATH, CURVE</b>									
180	2	14	16	27	59	2	16	20	38
181	4	21	27	71	123	4	24	37	65
182	3	7	11	23	44	3	8	18	29
183	1	12	24	61	98	1	12	28	41
184	0	7	13	13	33	0	7	16	23
189	0	0	0	0	0	0	0	0	0
<b>Sub-total</b>	<b>10</b>	<b>61</b>	<b>91</b>	<b>195</b>	<b>357</b>	<b>10</b>	<b>67</b>	<b>119</b>	<b>196</b>
<b>MISCELLANEOUS</b>									
190	0	1	1	0	2	0	1	1	2
191	0	0	2	8	10	0	0	2	2
192	1	0	0	1	2	1	0	0	1
193	0	1	0	0	1	0	1	1	2
194	0	1	0	2	3	0	1	0	1
199	0	0	2	10	12	0	0	2	2
<b>Sub-total</b>	<b>1</b>	<b>3</b>	<b>5</b>	<b>21</b>	<b>30</b>	<b>1</b>	<b>3</b>	<b>6</b>	<b>10</b>
<b>TOTAL</b>	<b>37</b>	<b>237</b>	<b>462</b>	<b>1238</b>	<b>1974</b>	<b>39</b>	<b>279</b>	<b>626</b>	<b>944</b>

<sup>1</sup> Crash Code Type (DCA) - Refer to Figure 4

Table 14c: Crashes and Casualties by Crash Code Type: South Australia

Crash Code Type (DCA) <sup>1</sup>	Crashes				ALL CRASHES	Casualties			
	Fatal Crashes	Serious Injury Crashes	Minor Injury Crashes	Property Damage Crashes		Fatalities	Serious Injuries	Minor Injuries	ALL CASUALTIES
<b>PEDESTRIANS</b>									
100	2	16	59	66	143	2	16	60	78
101	1	2	7	5	15	1	2	8	11
102	0	29	35	33	97	0	29	36	65
103	3	4	7	9	23	3	4	9	16
104	0	2	3	5	10	0	2	3	5
105	0	0	1	2	3	0	0	1	1
106	0	4	7	3	14	0	4	7	11
107	1	7	10	18	36	1	7	10	18
108	0	2	0	3	5	0	2	1	3
109	1	4	19	9	33	1	4	20	25
<b>Sub-total</b>	<b>8</b>	<b>70</b>	<b>148</b>	<b>153</b>	<b>379</b>	<b>8</b>	<b>70</b>	<b>155</b>	<b>233</b>
<b>ADJ DIRECTIONS</b>									
110	1	20	211	443	675	1	21	310	332
111	0	3	54	192	249	0	3	61	64
112	0	0	3	19	22	0	0	3	3
113	6	31	179	559	775	6	40	233	279
114	0	1	9	31	41	0	1	11	12
115	0	0	2	21	23	0	0	2	2
116	0	7	51	164	222	0	7	63	70
117	0	0	0	1	1	0	0	0	0
118	0	0	0	4	4	0	0	0	0
119	0	1	4	15	20	0	1	4	5
<b>Sub-total</b>	<b>7</b>	<b>63</b>	<b>513</b>	<b>1449</b>	<b>2032</b>	<b>7</b>	<b>73</b>	<b>687</b>	<b>767</b>
<b>OPP DIRECTIONS</b>									
120	3	34	61	118	216	3	45	101	149
121	1	27	308	711	1047	1	32	428	461
122	0	0	0	1	1	0	0	0	0
123	0	0	5	17	22	0	0	6	6
124	0	0	2	2	4	0	0	2	2
125	0	0	0	0	0	0	0	0	0
129	0	1	2	0	3	0	1	2	3
<b>Sub-total</b>	<b>4</b>	<b>62</b>	<b>378</b>	<b>849</b>	<b>1293</b>	<b>4</b>	<b>78</b>	<b>539</b>	<b>621</b>
<b>SAME DIRECTION</b>									
130	3	33	593	1643	2272	3	44	726	773
131	0	3	85	176	264	0	3	91	94
132	0	9	102	220	331	0	9	135	144
133	0	5	7	131	143	0	7	13	20
134	0	1	30	216	247	0	1	37	38
135	0	3	31	253	287	0	3	37	40
136	0	1	10	50	61	0	1	10	11
137	0	3	22	98	123	0	3	22	25
139	0	0	1	7	8	0	0	1	1
<b>Sub-total</b>	<b>3</b>	<b>58</b>	<b>881</b>	<b>2794</b>	<b>3736</b>	<b>3</b>	<b>71</b>	<b>1072</b>	<b>1146</b>
<b>MANOEUVERING</b>									
140	1	10	46	134	191	1	11	54	66
141	0	0	4	52	56	0	0	4	4
142	0	0	8	62	70	0	0	8	8
143	0	0	0	14	14	0	0	0	0
144	0	0	2	35	37	0	0	2	2
145	0	0	4	51	55	0	0	4	4

<sup>1</sup> Crash Code Type (DCA) - Refer to Figure 4

Table 14c: Crashes and Casualties by Crash Code Type: South Australia (cont.)

Crash Code Type (DCA) <sup>1</sup>	Crashes					Casualties			
	Fatal Crashes	Serious Injury Crashes	Minor Injury Crashes	Property Damage Crashes	ALL CRASHES	Fatalities	Serious Injuries	Minor Injuries	ALL CASUALTIES
146	0	2	6	75	83	0	2	6	8
147	2	7	84	229	322	2	7	96	105
148	1	8	28	43	80	1	8	30	39
149	0	7	18	45	70	0	8	23	31
<b>Sub-total</b>	<b>4</b>	<b>34</b>	<b>200</b>	<b>740</b>	<b>978</b>	<b>4</b>	<b>36</b>	<b>227</b>	<b>267</b>
<b>OVERTAKING</b>									
150	1	0	3	4	8	1	1	4	6
151	1	2	4	11	18	1	2	4	7
152	1	5	15	41	62	1	6	17	24
153	0	0	1	7	8	0	0	1	1
154	0	0	1	3	4	0	0	1	1
159	0	3	10	51	64	0	3	11	14
<b>Sub-total</b>	<b>3</b>	<b>10</b>	<b>34</b>	<b>117</b>	<b>164</b>	<b>3</b>	<b>12</b>	<b>38</b>	<b>53</b>
<b>ON PATH</b>									
160	1	12	78	644	735	1	13	83	97
161	0	0	0	0	0	0	0	0	0
162	0	0	3	4	7	0	0	3	3
163	0	2	14	31	47	0	2	14	16
164	0	2	0	30	32	0	2	0	2
165	1	1	0	6	8	1	1	1	3
166	0	2	8	44	54	0	2	8	10
167	0	7	25	119	151	0	9	33	42
169	0	3	13	100	116	0	4	15	19
<b>Sub-total</b>	<b>2</b>	<b>29</b>	<b>141</b>	<b>978</b>	<b>1150</b>	<b>2</b>	<b>33</b>	<b>157</b>	<b>192</b>
<b>OFF PATH, STRAIGHT</b>									
170	1	8	11	20	40	1	11	11	23
171	5	38	116	455	614	5	41	139	185
172	0	3	7	19	29	0	3	9	12
173	10	31	59	287	387	12	38	72	122
174	1	33	81	63	178	1	34	86	121
175	1	2	13	32	48	1	2	16	19
176	1	28	87	178	294	1	31	106	138
179	0	0	4	10	14	0	0	4	4
<b>Sub-total</b>	<b>19</b>	<b>143</b>	<b>378</b>	<b>1064</b>	<b>1604</b>	<b>21</b>	<b>160</b>	<b>443</b>	<b>624</b>
<b>OFF PATH, CURVE</b>									
180	2	16	26	39	83	2	18	30	50
181	8	38	76	260	382	8	44	96	148
182	4	10	19	36	69	4	12	28	44
183	3	23	66	215	307	4	26	78	108
184	0	14	29	16	59	0	14	32	46
189	0	0	0	0	0	0	0	0	0
<b>Sub-total</b>	<b>17</b>	<b>101</b>	<b>216</b>	<b>566</b>	<b>900</b>	<b>18</b>	<b>114</b>	<b>264</b>	<b>396</b>
<b>MISCELLANEOUS</b>									
190	0	3	4	0	7	0	3	4	7
191	0	0	4	53	57	0	0	4	4
192	1	0	1	2	4	1	0	1	2
193	0	1	0	3	4	0	1	1	2
194	0	1	6	18	25	0	1	6	7
199	0	0	2	20	22	0	0	2	2
<b>Sub-total</b>	<b>1</b>	<b>5</b>	<b>17</b>	<b>96</b>	<b>119</b>	<b>1</b>	<b>5</b>	<b>18</b>	<b>24</b>
<b>TOTAL</b>	<b>68</b>	<b>575</b>	<b>2906</b>	<b>8806</b>	<b>12355</b>	<b>71</b>	<b>652</b>	<b>3600</b>	<b>4323</b>

<sup>1</sup> Crash Code Type (DCA) - Refer to Figure 4

Table 15a: Crashes and Casualties by Location Type and Severity:  
Metropolitan Adelaide

Location Type	Crashes					Casualties			
	Fatal Crashes	Serious Injury Crashes	Minor Injury Crashes	Property Damage Crashes	ALL CRASHES	Fatalities	Serious Injuries	Minor Injuries	ALL CASUALTIES
<b>INTERSECTION</b>									
Interchange	0	1	1	17	19	0	1	1	2
Cross Road	1	58	671	1653	2383	1	65	873	939
Y-Junction	0	0	3	6	9	0	0	3	3
T-Junction	8	73	620	1832	2533	8	81	748	837
Multiple	0	4	30	79	113	0	4	33	37
Rail Crossing	0	1	3	10	14	0	1	3	4
<b>Sub-total</b>	<b>9</b>	<b>137</b>	<b>1328</b>	<b>3597</b>	<b>5071</b>	<b>9</b>	<b>152</b>	<b>1661</b>	<b>1822</b>
<b>MID BLOCK</b>									
Crossover	0	0	0	0	0	0	0	0	0
Rail Crossing	0	0	6	23	29	0	0	7	7
Divided Road	8	64	445	1533	2050	8	69	530	607
Not Divided	13	120	567	2118	2818	14	130	651	795
One Way	0	1	7	22	30	0	1	7	8
Freeway	1	5	58	221	285	1	10	83	94
Ramp On	0	2	1	9	12	0	2	2	4
Ramp Off	0	1	5	11	17	0	1	5	6
Pedestrian Crossing	0	5	19	25	49	0	5	19	24
Other Midblock	0	3	8	9	20	0	3	9	12
<b>Sub-total</b>	<b>22</b>	<b>201</b>	<b>1116</b>	<b>3971</b>	<b>5310</b>	<b>23</b>	<b>221</b>	<b>1313</b>	<b>1557</b>
<b>TOTAL</b>	<b>31</b>	<b>338</b>	<b>2444</b>	<b>7568</b>	<b>10381</b>	<b>32</b>	<b>373</b>	<b>2974</b>	<b>3379</b>

Table 15b: Crashes and Casualties by Location Type and Severity:  
Rural

Location Type	Crashes					Casualties			
	Fatal Crashes	Serious Injury Crashes	Minor Injury Crashes	Property Damage Crashes	ALL CRASHES	Fatalities	Serious Injuries	Minor Injuries	ALL CASUALTIES
<b>INTERSECTION</b>									
Interchange	0	0	0	0	0	0	0	0	0
Cross Road	1	14	68	171	254	1	20	101	122
Y-Junction	0	0	0	0	0	0	0	0	0
T-Junction	5	33	65	197	300	5	39	103	147
Multiple	0	2	0	3	5	0	2	0	2
Rail Crossing	0	0	0	0	0	0	0	0	0
<b>Sub-total</b>	<b>6</b>	<b>49</b>	<b>133</b>	<b>371</b>	<b>559</b>	<b>6</b>	<b>61</b>	<b>204</b>	<b>271</b>
<b>MID BLOCK</b>									
Rail Crossing	0	0	0	0	0	0	0	0	0
Divided Road	1	2	1	2	6	1	2	3	6
Not Divided	1	11	15	73	100	1	13	17	31
One Way	29	168	304	774	1275	31	194	393	618
Freeway	0	1	1	5	7	0	1	1	2
Ramp On	0	0	1	7	8	0	0	1	1
Ramp Off	0	0	1	0	1	0	0	1	1
Pedestrian Crossing	0	0	0	0	0	0	0	0	0
Other Midblock	0	0	1	2	3	0	0	1	1
<b>Sub-total</b>	<b>0</b>	<b>6</b>	<b>5</b>	<b>4</b>	<b>15</b>	<b>0</b>	<b>8</b>	<b>5</b>	<b>13</b>
<b>TOTAL</b>	<b>31</b>	<b>188</b>	<b>329</b>	<b>867</b>	<b>1415</b>	<b>33</b>	<b>218</b>	<b>422</b>	<b>673</b>

Table 15c: Crashes and Casualties by Location Type and Severity:  
South Australia

Location Type	Crashes					Casualties			
	Fatal Crashes	Serious Injury Crashes	Minor Injury Crashes	Property Damage Crashes	ALL CRASHES	Fatalities	Serious Injuries	Minor Injuries	ALL CASUALTIES
<b>INTERSECTION</b>									
Interchange	0	1	1	17	19	0	1	1	2
Cross Road	2	72	739	1824	2637	2	85	974	1061
Y- Junction	0	0	3	6	9	0	0	3	3
T-Junction	13	106	685	2029	2833	13	120	851	984
Multiple	0	6	30	82	118	0	6	33	39
Rail Crossing	0	1	3	10	14	0	1	3	4
<b>Sub-total</b>	<b>15</b>	<b>186</b>	<b>1461</b>	<b>3968</b>	<b>5630</b>	<b>15</b>	<b>213</b>	<b>1865</b>	<b>2093</b>
<b>MID BLOCK</b>									
Crossover	0	0	0	0	0				
Rail Crossing	1	2	7	25	35	1	2	10	13
Divided Road	9	75	460	1606	2150	9	82	547	638
Not Divided	42	288	871	2892	4093	45	324	1044	1413
One Way	0	2	8	27	37	0	2	8	10
Freeway	1	5	59	228	293	1	10	84	95
Ramp On	0	2	2	9	13	0	2	3	5
Ramp Off	0	1	5	11	17	0	1	5	6
Pedestrian Crossing	0	5	20	27	52	0	5	20	25
Other	0	9	13	13	35	0	11	14	25
<b>Sub-total</b>	<b>53</b>	<b>389</b>	<b>1445</b>	<b>4838</b>	<b>6725</b>	<b>56</b>	<b>439</b>	<b>1735</b>	<b>2230</b>
<b>TOTAL</b>	<b>68</b>	<b>575</b>	<b>2906</b>	<b>8806</b>	<b>12355</b>	<b>71</b>	<b>652</b>	<b>3600</b>	<b>4323</b>

Table 16a: Crashes and Casualties by Traffic Control and Severity:  
Metropolitan Adelaide

Traffic Control	Crashes					Casualties			
	Fatal Crashes	Serious Injury Crashes	Minor Injury Crashes	Property Damage Crashes	ALL CRASHES	Fatalities	Serious Injuries	Minor Injuries	ALL CASUALTIES
<b>INTERSECTION</b>									
Traffic Signals	4	50	582	1507	2143	4	56	752	812
Give Way Sign	2	19	197	478	696	2	23	273	298
Stop Sign	0	11	93	248	352	0	12	116	128
Roundabout	1	15	112	321	449	1	17	120	138
No Control	2	42	344	1043	1431	2	44	400	446
<b>Sub-total</b>	<b>9</b>	<b>137</b>	<b>1328</b>	<b>3597</b>	<b>5071</b>	<b>9</b>	<b>152</b>	<b>1661</b>	<b>1822</b>
<b>MID BLOCK</b>									
Traffic Signals	0	4	14	21	39	0	4	14	18
Give Way Sign	0	0	0	2	2	0	0	0	0
Roundabout	0	0	0	3	3	0	0	0	0
No Control	22	197	1095	3921	5235	23	217	1291	1531
Rail Xing-Boom	0	0	2	13	15	0	0	2	2
Rail Xing-Flashing	0	0	0	3	3	0	0	0	0
Rail Xing-Traffic Signals	0	0	4	6	10	0	0	5	5
Other	0	0	1	2	3	0	0	1	1
<b>Sub-total</b>	<b>22</b>	<b>201</b>	<b>1116</b>	<b>3971</b>	<b>5310</b>	<b>23</b>	<b>221</b>	<b>1313</b>	<b>1557</b>
<b>TOTAL</b>	<b>31</b>	<b>338</b>	<b>2444</b>	<b>7568</b>	<b>10381</b>	<b>32</b>	<b>373</b>	<b>2974</b>	<b>3379</b>



Table 16b: Crashes and Casualties by Traffic Control and Severity:  
Rural

Traffic Control	Crashes					Casualties			
	Fatal Crashes	Serious Injury Crashes	Minor Injury Crashes	Property Damage Crashes	ALL CRASHES	Fatalities	Serious Injuries	Minor Injuries	ALL CASUALTIES
<b>INTERSECTION</b>									
Traffic Signals	0	0	5	24	29	0	0	7	7
Give Way Sign	3	20	59	152	234	3	27	94	124
Stop Sign	0	5	13	23	41	0	6	19	25
Roundabout	0	1	6	38	45	0	1	7	8
No Control	3	23	50	134	210	3	27	77	107
Rail Xing-Boom	0	0	0	0	0	0	0	0	0
<b>Sub-total</b>	<b>6</b>	<b>49</b>	<b>133</b>	<b>371</b>	<b>559</b>	<b>6</b>	<b>61</b>	<b>204</b>	<b>271</b>
<b>MID BLOCK</b>									
Traffic Signals	0	0	0	2	2	0	0	0	0
Give Way Sign	0	2	0	1	3	0	2	1	3
Stop Sign	1	0	0	0	1	1	0	0	1
No Control	30	185	328	862	1405	32	215	419	666
Rail Xing-Boom	0	0	0	0	0	0	0	0	0
Rail Xing-Flashing	0	1	1	1	3	0	1	2	3
Rail Xing-No Control	0	0	0	0	0	0	0	0	0
Other	0	0	0	1	1	0	0	0	0
<b>Sub-total</b>	<b>31</b>	<b>188</b>	<b>329</b>	<b>867</b>	<b>1415</b>	<b>33</b>	<b>218</b>	<b>422</b>	<b>673</b>
<b>TOTAL</b>	<b>37</b>	<b>237</b>	<b>462</b>	<b>1238</b>	<b>1974</b>	<b>39</b>	<b>279</b>	<b>626</b>	<b>944</b>

Table 16c: Crashes and Casualties by Traffic Control and Severity:  
South Australia

Traffic Control	Crashes					Casualties			
	Fatal Crashes	Serious Injury Crashes	Minor Injury Crashes	Property Damage Crashes	ALL CRASHES	Fatalities	Serious Injuries	Minor Injuries	ALL CASUALTIES
Traffic Signals	4	50	587	1531	2172	4	56	759	819
Give Way Sign	5	39	256	630	930	5	50	367	422
Stop Sign	0	16	106	271	393	0	18	135	153
Roundabout	1	16	118	359	494	1	18	127	146
No Control	5	65	394	1177	1641	5	71	477	553
Rail Xing-Boom	0	0	0	0	0	0	0	0	0
<b>Sub-total</b>	<b>15</b>	<b>186</b>	<b>1461</b>	<b>3968</b>	<b>5630</b>	<b>15</b>	<b>213</b>	<b>1865</b>	<b>2093</b>
<b>MID BLOCK</b>									
Traffic Signals	0	4	14	23	41	0	4	14	18
Give Way Sign	0	2	0	3	5	0	2	1	3
Stop Sign	1	0	0	0	1	1	0	0	1
Roundabout	0	0	0	3	3	0	0	0	0
No Control	52	382	1423	4783	6640	55	432	1710	2197
Rail Xing-Boom	0	0	2	13	15	0	0	2	2
Rail Xing-Flashing	0	1	1	4	6	0	1	2	3
Rail Xing-Traffic Signals	0	0	4	6	10	0	0	5	5
Rail Xing-No Control	0	0	0	0	0	0	0	0	0
Other	0	0	1	3	4	0	0	1	1
<b>Sub-total</b>	<b>53</b>	<b>389</b>	<b>1445</b>	<b>4838</b>	<b>6725</b>	<b>56</b>	<b>439</b>	<b>1735</b>	<b>2230</b>
<b>TOTAL</b>	<b>68</b>	<b>575</b>	<b>2906</b>	<b>8806</b>	<b>12355</b>	<b>71</b>	<b>652</b>	<b>3600</b>	<b>4323</b>

Table 17: Crashes and Casualties by Area Speed Limit, Region & Severity

Area Speed Limit	Crashes					Casualties			
	Fatal Crashes	Serious Injury Crashes	Minor Injury Crashes	Property Damage Crashes	ALL CRASHES	Fatalities	Serious Injuries	Minor Injuries	ALL CASUALTIES
<b>METROPOLITAN</b>									
<50km/h	0	12	57	200	269	0	13	62	75
50km/h	5	82	563	2054	2704	5	84	623	712
60km/h	12	161	1356	3996	5525	13	182	1641	1836
70km/h	2	12	83	254	351	2	15	106	123
80km/h	8	49	243	671	971	8	53	340	401
90km/h	0	4	49	127	180	0	5	59	64
100km/h	4	13	58	134	209	4	14	106	124
110km/h	0	5	35	132	172	0	7	37	44
<b>Sub-total</b>	<b>31</b>	<b>338</b>	<b>2444</b>	<b>7568</b>	<b>10381</b>	<b>32</b>	<b>373</b>	<b>2974</b>	<b>3379</b>
<b>RURAL</b>									
<50km/h	0	3	14	21	38	0	3	16	19
50km/h	2	45	103	324	474	2	46	128	176
60km/h	3	19	42	171	235	3	21	54	78
70km/h	0	0	0	3	3	0	0	0	0
80km/h	4	24	56	112	196	4	28	77	109
90km/h	1	3	10	14	28	1	3	11	15
100km/h	15	94	136	339	584	15	111	207	333
110km/h	12	49	101	254	416	14	67	133	214
<b>Sub-total</b>	<b>37</b>	<b>237</b>	<b>462</b>	<b>1238</b>	<b>1974</b>	<b>39</b>	<b>279</b>	<b>626</b>	<b>944</b>
<b>TOTAL</b>	<b>68</b>	<b>575</b>	<b>2906</b>	<b>8806</b>	<b>12355</b>	<b>71</b>	<b>652</b>	<b>3600</b>	<b>4323</b>

Table 18: Crashes and Casualties by Light Conditions, Region & Severity

Light Conditions & Region	Crashes					Casualties			
	Fatal Crashes	Serious Injury Crashes	Minor Injury Crashes	Property Damage Crashes	ALL CRASHES	Fatalities	Serious Injuries	Minor Injuries	ALL CASUALTIES
<b>METROPOLITAN</b>									
Daylight	15	217	1971	5748	7951	16	231	2390	2637
Night	16	121	473	1820	2430	16	142	584	742
<b>Sub-total</b>	<b>31</b>	<b>338</b>	<b>2444</b>	<b>7568</b>	<b>10381</b>	<b>32</b>	<b>373</b>	<b>2974</b>	<b>3379</b>
<b>RURAL</b>									
Daylight	18	166	356	857	1397	20	192	489	701
Night	19	71	106	381	577	19	87	137	243
<b>Sub-total</b>	<b>37</b>	<b>237</b>	<b>462</b>	<b>1238</b>	<b>1974</b>	<b>39</b>	<b>279</b>	<b>626</b>	<b>944</b>
<b>TOTAL</b>	<b>68</b>	<b>575</b>	<b>2906</b>	<b>8806</b>	<b>12355</b>	<b>71</b>	<b>652</b>	<b>3600</b>	<b>4323</b>

Table 19: Crashes and Casualties by Vertical Alignment, Region & Severity

Vertical Alignment & Region	Crashes					Casualties			
	Fatal Crashes	Serious Injury Crashes	Minor Injury Crashes	Property Damage Crashes	ALL CRASHES	Fatalities	Serious Injuries	Minor Injuries	ALL CASUALTIES
<b>METROPOLITAN</b>									
Level	23	253	2076	6589	<b>8941</b>	23	276	2511	<b>2810</b>
Crest of Hill	0	6	35	89	<b>130</b>	0	6	43	<b>49</b>
Bottom of Hill	1	4	30	71	<b>106</b>	1	6	40	<b>47</b>
Slope	7	74	303	808	<b>1192</b>	8	84	380	<b>472</b>
Unknown	0	1	0	11	<b>12</b>	0	1	0	<b>1</b>
<b>Sub-total</b>	<b>31</b>	<b>338</b>	<b>2444</b>	<b>7568</b>	<b>10381</b>	<b>32</b>	<b>373</b>	<b>2974</b>	<b>3379</b>
<b>RURAL</b>									
Level	30	172	355	959	<b>1516</b>	32	210	483	<b>725</b>
Crest of Hill	0	6	24	51	<b>81</b>	0	6	30	<b>36</b>
Bottom of Hill	3	10	15	33	<b>61</b>	3	10	18	<b>31</b>
Slope	4	41	62	184	<b>291</b>	4	44	89	<b>137</b>
Unknown	0	8	6	11	<b>25</b>	0	9	6	<b>15</b>
<b>Sub-total</b>	<b>37</b>	<b>237</b>	<b>462</b>	<b>1238</b>	<b>1974</b>	<b>39</b>	<b>279</b>	<b>626</b>	<b>944</b>
<b>TOTAL</b>	<b>68</b>	<b>575</b>	<b>2906</b>	<b>8806</b>	<b>12355</b>	<b>71</b>	<b>652</b>	<b>3600</b>	<b>4323</b>

Table 20: Crashes and Casualties by Horizontal Alignment, Region & Severity

Horizontal Alignment & Region	Crashes					Casualties			
	Fatal Crashes	Serious Injury Crashes	Minor Injury Crashes	Property Damage Crashes	ALL CRASHES	Fatalities	Serious Injuries	Minor Injuries	ALL CASUALTIES
<b>METROPOLITAN</b>									
Straight	21	267	2147	6663	<b>9098</b>	21	293	2617	<b>2931</b>
Curved, View Obscured	3	25	89	216	<b>333</b>	4	28	114	<b>146</b>
Curved, View Open	7	46	207	684	<b>944</b>	7	52	242	<b>301</b>
Unknown	0	0	1	5	<b>6</b>	0	0	1	<b>1</b>
<b>Sub-total</b>	<b>31</b>	<b>338</b>	<b>2444</b>	<b>7568</b>	<b>10381</b>	<b>32</b>	<b>373</b>	<b>2974</b>	<b>3379</b>
<b>RURAL</b>									
Straight	25	154	336	924	<b>1439</b>	27	180	448	<b>655</b>
Curved, View Obscured	3	28	48	96	<b>175</b>	3	32	63	<b>98</b>
Curved, View Open	9	54	78	211	<b>352</b>	9	65	115	<b>189</b>
Unknown	0	1	0	7	<b>8</b>	0	2	0	<b>2</b>
<b>Sub-total</b>	<b>37</b>	<b>237</b>	<b>462</b>	<b>1238</b>	<b>1974</b>	<b>39</b>	<b>279</b>	<b>626</b>	<b>944</b>
<b>TOTAL</b>	<b>68</b>	<b>575</b>	<b>2906</b>	<b>8806</b>	<b>12355</b>	<b>71</b>	<b>652</b>	<b>3600</b>	<b>4323</b>

Table 21: Crashes and Casualties by Road Moisture, Region & Severity

Road Moisture & Region	Crashes				Casualties				
	Fatal Crashes	Serious Injury Crashes	Minor Injury Crashes	Property Damage Crashes	ALL CRASHES	Fatalities	Serious Injuries	Minor Injuries	ALL CASUALTIES
<b>METROPOLITAN</b>									
Dry	25	286	2039	6179	8529	26	315	2485	2826
Wet	5	51	400	1372	1828	5	57	484	546
Unknown	1	1	5	17	24	1	1	5	7
<b>Sub-total</b>	<b>31</b>	<b>338</b>	<b>2444</b>	<b>7568</b>	<b>10381</b>	<b>32</b>	<b>373</b>	<b>2974</b>	<b>3379</b>
<b>RURAL</b>									
Dry	32	194	387	1003	1616	34	226	515	775
Wet	3	40	71	219	333	3	50	105	158
Unknown	2	3	4	16	25	2	3	6	11
<b>Sub-total</b>	<b>37</b>	<b>237</b>	<b>462</b>	<b>1238</b>	<b>1974</b>	<b>39</b>	<b>279</b>	<b>626</b>	<b>944</b>
<b>TOTAL</b>	<b>68</b>	<b>575</b>	<b>2906</b>	<b>8806</b>	<b>12355</b>	<b>71</b>	<b>652</b>	<b>3600</b>	<b>4323</b>

Table 22: Crashes and Casualties by Route and Severity

Route	Crashes				Casualties				
	Fatal Crashes	Serious Injury Crashes	Minor Injury Crashes	Property Damage Crashes	ALL CRASHES	Fatalities	Serious Injuries	Minor Injuries	ALL CASUALTIES
Anzac Highway	0	4	30	86	120	0	4	34	38
Barrier Highway	0	1	5	7	13	0	1	10	11
Cudlee Creek - Lobethal Road	0	1	2	6	9	0	1	2	3
Dukes Highway	0	3	5	15	23	0	4	5	9
Eyre Highway	0	2	11	34	47	0	2	14	16
Gorge Road	0	3	19	45	67	0	3	25	28
Lincoln Highway	0	2	5	14	21	0	2	7	9
Lyndoch - Chain of Ponds Road	0	1	3	7	11	0	1	4	5
Lower North East Road	0	0	1	8	9	0	0	1	1
Horrocks Highway	0	1	6	11	18	0	1	12	13
Main North Road (M) <sup>1</sup>	3	14	110	371	498	3	16	147	166
North East Road	0	7	58	162	227	0	7	70	77
Main South Road	0	3	16	24	43	0	3	18	21
Port Wakefield Road	4	9	25	71	109	6	11	35	52
Princes Highway	0	6	9	32	47	0	7	14	21
Riddoch Highway	0	4	7	9	20	0	5	10	15
South Eastern Freeway <sup>2</sup>	0	5	22	83	110	0	8	32	40
Southern Expressway	0	1	12	44	57	0	1	24	25
Stuart Highway	1	3	8	18	30	1	4	12	17
Sturt Highway	1	3	10	52	66	1	3	16	20
Tea Tree Gully - Mannum Road	0	3	15	30	48	0	3	20	23
Victor Harbor Road	0	3	21	40	64	0	4	35	39

M = Metropolitan Adelaide

<sup>1</sup> From Fitzroy Terrace to Gawler Bypass.

<sup>2</sup> Does not include the intersection with Cross Road.

**Table 23a: Crashes and Casualties by Local Government Area & Severity, Metropolitan Adelaide: Council Roads**

Local Government Area	Crashes				Casualties				
	Fatal Crashes	Serious Injury Crashes	Minor Injury Crashes	Property Damage Crashes	ALL CRASHES	Fatalities	Serious Injuries	Minor Injuries	ALL CASUALTIES
City of Adelaide	0	13	104	290	<b>407</b>	0	13	117	<b>130</b>
Adelaide Hills Council	2	7	27	75	<b>111</b>	2	7	30	<b>39</b>
Adelaide Plains Council	0	0	5	8	<b>13</b>	0	0	11	<b>11</b>
The Barossa Council	0	0	1	2	<b>3</b>	0	0	1	<b>1</b>
City of Burnside	0	0	16	64	<b>80</b>	0	0	17	<b>17</b>
Campbelltown City Council	0	3	15	66	<b>84</b>	0	4	17	<b>21</b>
City of Charles Sturt	0	5	37	170	<b>212</b>	0	5	40	<b>45</b>
Town of Gawler	0	2	13	35	<b>50</b>	0	2	18	<b>20</b>
City of Holdfast Bay	0	2	23	86	<b>111</b>	0	2	26	<b>28</b>
Light Regional Council	0	1	2	8	<b>11</b>	0	1	5	<b>6</b>
City of Marion	0	8	36	141	<b>185</b>	0	8	43	<b>51</b>
City of Mitcham	0	6	25	83	<b>114</b>	0	6	26	<b>32</b>
Mount Barker District Council	2	1	19	54	<b>76</b>	2	2	21	<b>25</b>
City of Norwood Payneham & St Peters	0	4	18	60	<b>82</b>	0	4	20	<b>24</b>
City of Onkaparinga	1	24	96	228	<b>349</b>	1	27	110	<b>138</b>
City of Playford	2	15	66	280	<b>363</b>	2	18	81	<b>101</b>
City of Prospect	0	2	8	33	<b>43</b>	0	2	11	<b>13</b>
City of Port Adelaide Enfield	0	10	40	239	<b>289</b>	0	11	42	<b>53</b>
City of Salisbury	2	8	60	241	<b>311</b>	2	8	68	<b>78</b>
City of Tea Tree Gully	1	2	22	112	<b>137</b>	1	3	26	<b>30</b>
City of Unley	0	3	16	54	<b>73</b>	0	3	17	<b>20</b>
Town of Walkerville	0	1	3	10	<b>14</b>	0	1	3	<b>4</b>
City of West Torrens	0	6	23	108	<b>137</b>	0	6	25	<b>31</b>
<b>Total</b>	<b>10</b>	<b>123</b>	<b>675</b>	<b>2447</b>	<b>3255</b>	<b>10</b>	<b>133</b>	<b>775</b>	<b>918</b>

## Table 23b: Crashes and Casualties by Local Government Area & Severity, Metropolitan Adelaide: Departmental Roads

Local Government Area	Crashes				Casualties				
	Fatal Crashes	Serious Injury Crashes	Minor Injury Crashes	Property Damage Crashes	ALL CRASHES	Fatalities	Serious Injuries	Minor Injuries	ALL CASUALTIES
City of Adelaide	0	3	45	94	142	0	3	49	52
Adelaide Hills Council	0	21	78	186	285	0	23	102	125
Adelaide Plains Council	0	1	10	12	23	0	1	18	19
The Barossa Council	0	0	0	1	1	0	0	0	0
City of Burnside	0	4	39	161	204	0	4	44	48
Campbelltown City Council	3	8	69	125	205	4	8	80	92
City of Charles Sturt	0	13	147	453	613	0	14	179	193
Town of Gawler	1	0	24	61	86	1	0	27	28
City of Holdfast Bay	2	4	35	99	140	2	4	39	45
Light Regional Council	1	2	6	28	37	1	2	7	10
City of Marion	0	12	117	316	445	0	13	153	166
City of Mitcham	0	14	95	326	435	0	16	120	136
Mount Barker District Council	1	6	52	87	146	1	8	71	80
City of Norwood Payneham & St Peters	0	8	80	272	360	0	9	92	101
City of Onkaparinga	2	16	136	329	483	2	18	173	193
City of Playford	3	17	89	309	418	3	19	128	150
City of Prospect	0	8	48	127	183	0	8	57	65
City of Port Adelaide Enfield	2	32	205	647	886	2	37	245	284
City of Salisbury	6	19	180	563	768	6	24	231	261
City of Tea Tree Gully	0	12	86	202	300	0	14	106	120
City of Unley	0	7	63	179	249	0	7	68	75
Town of Walkerville	0	1	25	82	108	0	1	35	36
City of West Torrens	0	7	140	462	609	0	7	175	182
<b>Total</b>	<b>21</b>	<b>215</b>	<b>1769</b>	<b>5121</b>	<b>7126</b>	<b>22</b>	<b>240</b>	<b>2199</b>	<b>2461</b>

Table 23c: Crashes and Casualties by Local Government Area & Severity, Metropolitan Adelaide: All Roads

Local Government Area	Crashes					Casualties			
	Fatal Crashes	Serious Injury Crashes	Minor Injury Crashes	Property Damage Crashes	ALL CRASHES	Fatalities	Serious Injuries	Minor Injuries	ALL CASUALTIES
City of Adelaide	0	16	149	384	549	0	16	166	182
Adelaide Hills Council	2	28	105	261	396	2	30	132	164
Adelaide Plains Council	0	1	15	20	36	0	1	29	30
The Barossa Council	0	0	1	3	4	0	0	1	1
City of Burnside	0	4	55	225	284	0	4	61	65
Campbelltown City Council	3	11	84	191	289	4	12	97	113
City of Charles Sturt	0	18	184	623	825	0	19	219	238
Town of Gawler	1	2	37	96	136	1	2	45	48
City of Holdfast Bay	2	6	58	185	251	2	6	65	73
Light Regional Council	1	3	8	36	48	1	3	12	16
City of Marion	0	20	153	457	630	0	21	196	217
City of Mitcham	0	20	120	409	549	0	22	146	168
Mount Barker District Council	3	7	71	141	222	3	10	92	105
City of Norwood Payneham & St Peters	0	12	98	332	442	0	13	112	125
City of Onkaparinga	3	40	232	557	832	3	45	283	331
City of Playford	5	32	155	589	781	5	37	209	251
City of Prospect	0	10	56	160	226	0	10	68	78
City of Port Adelaide Enfield	2	42	245	886	1175	2	48	287	337
City of Salisbury	8	27	240	804	1079	8	32	299	339
City of Tea Tree Gully	1	14	108	314	437	1	17	132	150
City of Unley	0	10	79	233	322	0	10	85	95
Town of Walkerville	0	2	28	92	122	0	2	38	40
City of West Torrens	0	13	163	570	746	0	13	200	213
<b>Total</b>	<b>31</b>	<b>338</b>	<b>2444</b>	<b>7568</b>	<b>10381</b>	<b>32</b>	<b>373</b>	<b>2974</b>	<b>3379</b>

## Table 24a: Crashes and Casualties by Local Government Area & Severity, Rural: Council Roads

Local Government Area	Crashes					Casualties			
	Fatal Crashes	Serious Injury Crashes	Minor Injury Crashes	Property Damage Crashes	ALL CRASHES	Fatalities	Serious Injuries	Minor Injuries	ALL CASUALTIES
Adelaide Hills Council, The	0	0	0	0	0	0	0	0	0
Adelaide Plains Council	0	4	4	8	16	0	4	7	11
Alexandrina Council	1	11	15	35	62	1	11	17	29
Anangu Pitjantjatjara Yankunytjatjara	0	4	1	0	5	0	4	1	5
The Barossa Council	0	6	15	19	40	0	7	20	27
Barunga West Council	0	0	5	3	8	0	0	5	5
Berri Barmera Council	0	0	4	17	21	0	0	5	5
District Council of Ceduna	0	2	0	2	4	0	2	0	2
Clare and Gilbert Valleys Council	0	4	6	9	19	0	4	8	12
District Council of Cleve	1	1	0	2	4	1	1	0	2
District Council of Coober Pedy	0	1	1	3	5	0	1	1	2
Coorong District Council	0	2	3	6	11	0	2	4	6
Copper Coast Council	1	3	6	19	29	1	4	9	14
District Council of Elliston	0	0	0	0	0	0	0	0	0
The Flinders Ranges Council	0	0	1	0	1	0	0	1	1
District Council of Franklin Harbour	0	0	1	0	1	0	0	3	3
Regional Council of Goyder	0	2	2	9	13	0	2	4	6
District Council of Grant	0	4	3	7	14	0	4	7	11
Kangaroo Island Council	1	1	3	11	16	1	1	4	6
District Council of Karoonda East Murray	0	1	0	3	4	0	1	2	3
District Council of Kimba	0	0	0	3	3	0	0	0	0
Kingston District Council	0	1	3	0	4	0	2	3	5
Light Regional Council	0	0	4	12	16	0	0	4	4
District Council of Lower Eyre Peninsula	1	0	3	7	11	1	0	3	4
District Council of Loxton Waikerie	0	1	4	9	14	0	1	5	6
Mid Murray Council	0	3	6	17	26	0	3	7	10
<b>Sub-total</b>	<b>5</b>	<b>51</b>	<b>90</b>	<b>201</b>	<b>347</b>	<b>5</b>	<b>54</b>	<b>120</b>	<b>179</b>



Table 24a: Crashes and Casualties by Local Government Area & Severity, Rural: Council Roads (cont.)

Local Government Area	Crashes				Casualties				
	Fatal Crashes	Serious Injury Crashes	Minor Injury Crashes	Property Damage Crashes	ALL CRASHES	Fatalities	Serious Injuries	Minor Injuries	ALL CASUALTIES
City of Mount Gambier	0	3	13	34	50	0	3	18	21
District Council of Mount Remarkable	1	0	0	2	3	1	0	0	1
Rural City of Murray Bridge	0	4	11	22	37	0	4	14	18
Naracoorte Lucindale Council	0	1	1	7	9	0	1	1	2
Northern Areas Council	0	0	1	2	3	0	0	1	1
District Council of Orreroo Carrieton	0	0	0	1	1	0	0	0	0
Pastoral Unincorporated	0	1	3	0	4	0	1	4	5
District Council of Peterborough	0	1	1	1	3	0	1	2	3
Port Augusta City Council	0	2	4	19	25	0	2	4	6
City of Port Lincoln	1	1	5	11	18	1	2	7	10
Port Pirie Regional Council	1	1	5	30	37	1	1	5	7
Renmark Paringa Council	0	1	6	13	20	0	1	9	10
District Council of Robe	0	4	2	3	9	0	4	2	6
Municipal Council of Roxby Downs	0	1	3	4	8	0	1	3	4
Southern Mallee District Council	0	2	4	2	8	0	3	5	8
District Council of Streaky Bay	0	0	0	2	2	0	0	0	0
Tatiara District Council	3	2	5	6	16	3	3	6	12
District Council of Tumby Bay	0	2	1	3	6	0	2	2	4
Unincorporated (Eastern)	0	0	0	0	0	0	0	0	0
City of Victor Harbor	0	3	4	25	32	0	4	4	8
Wakefield Regional Council	0	4	3	9	16	0	4	3	7
Wattle Range Council	0	4	6	12	22	0	4	8	12
City of Whyalla	1	8	5	33	47	1	10	5	16
Wudinna District Council	0	2	2	1	5	0	2	2	4
District Council of Yankalilla	0	1	8	12	21	0	1	8	9
Yorke Peninsula Council	0	3	7	22	32	0	3	9	12
<b>Sub-total</b>	<b>7</b>	<b>51</b>	<b>100</b>	<b>276</b>	<b>434</b>	<b>7</b>	<b>57</b>	<b>122</b>	<b>186</b>
<b>TOTAL</b>	<b>12</b>	<b>102</b>	<b>190</b>	<b>477</b>	<b>781</b>	<b>12</b>	<b>111</b>	<b>242</b>	<b>365</b>

## Table 24b: Crashes and Casualties by Local Government Area & Severity, Rural: Departmental Roads

Local Government Area	Crashes					Casualties			
	Fatal Crashes	Serious Injury Crashes	Minor Injury Crashes	Property Damage Crashes	ALL CRASHES	Fatalities	Serious Injuries	Minor Injuries	ALL CASUALTIES
Adelaide Hills Council, The	0	0	0	0	0	0	0	0	0
Adelaide Plains Council	0	1	5	15	21	0	1	5	6
Alexandrina Council	1	13	25	64	103	1	16	43	60
Anangu Pitjantjatjara Yankunytjatjara	0	1	0	0	1	0	1	0	1
The Barossa Council	1	5	19	54	79	1	5	25	31
Barunga West Council	0	3	3	9	15	0	7	3	10
Berri Barmera Council	0	1	6	20	27	0	1	7	8
District Council of Ceduna	0	1	1	5	7	0	1	2	3
Clare and Gilbert Valleys Council	0	2	9	15	26	0	2	15	17
District Council of Cleve	0	0	1	3	4	0	0	1	1
District Council of Coober Pedy	0	0	1	0	1	0	0	1	1
Coorong District Council	0	5	11	18	34	0	7	17	24
Copper Coast Council	0	0	5	14	19	0	0	5	5
District Council of Elliston	0	0	3	3	6	0	0	4	4
The Flinders Ranges Council	0	0	4	1	5	0	0	4	4
District Council of Franklin Harbour	0	1	2	1	4	0	1	2	3
Regional Council of Goyder	0	1	2	6	9	0	1	2	3
District Council of Grant	3	2	8	15	28	3	7	14	24
Kangaroo Island Council	2	1	0	6	9	2	1	0	3
District Council of Karoonda East Murray	0	0	0	5	5	0	0	0	0
District Council of Kimba	0	1	0	5	6	0	1	0	1
Kingston District Council	0	1	2	3	6	0	1	2	3
Light Regional Council	2	5	10	31	48	2	6	14	22
District Council of Lower Eyre Peninsula	0	3	4	10	17	0	4	7	11
District Council of Loxton Waikerie	0	4	2	27	33	0	5	4	9
Mid Murray Council	1	6	9	23	39	1	6	10	17
<b>Sub-total</b>	<b>10</b>	<b>57</b>	<b>132</b>	<b>353</b>	<b>552</b>	<b>10</b>	<b>74</b>	<b>187</b>	<b>271</b>

Table 24b: Crashes and Casualties by Local Government Area & Severity, Rural: Departmental Roads (cont.)

Local Government Area	Crashes					Casualties			
	Fatal Crashes	Serious Injury Crashes	Minor Injury Crashes	Property Damage Crashes	ALL CRASHES	Fatalities	Serious Injuries	Minor Injuries	ALL CASUALTIES
City of Mount Gambier	0	4	5	39	48	0	4	9	13
District Council of Mount Remarkable	0	2	3	2	7	0	2	3	5
Rural City of Murray Bridge	1	7	17	51	76	1	8	17	26
Naracoorte Lucindale Council	2	5	3	4	14	2	6	4	12
Northern Areas Council	0	2	7	5	14	0	2	8	10
District Council of Orroroo Carrieton	1	1	1	0	3	1	1	2	4
Pastoral Unincorporated	3	17	16	57	93	3	22	22	47
District Council of Peterborough	0	0	1	3	4	0	0	1	1
Port Augusta City Council	2	4	8	26	40	2	6	8	16
City of Port Lincoln	0	1	5	25	31	0	1	5	6
Port Pirie Regional Council	1	3	13	25	42	1	4	21	26
Renmark Paringa Council	0	2	8	13	23	0	2	15	17
District Council of Robe	0	2	1	3	6	0	2	3	5
Municipal Council of Roxby Downs	0	1	0	2	3	0	1	0	1
Southern Mallee District Council	0	1	1	2	4	0	1	2	3
District Council of Streaky Bay	0	0	3	1	4	0	0	4	4
Tatiara District Council	0	4	4	13	21	0	4	4	8
District Council of Tumby Bay	0	0	1	2	3	0	0	1	1
Unincorporated (Eastern)	0	0	0	1	1	0	0	0	0
City of Victor Harbor	0	2	8	20	30	0	2	10	12
Wakefield Regional Council	3	8	8	36	55	5	10	15	30
Wattle Range Council	1	5	9	21	36	1	7	11	19
City of Whyalla	0	1	2	8	11	0	1	2	3
Wudinna District Council	0	0	3	3	6	0	0	4	4
District Council of Yankalilla	1	3	6	26	36	1	5	13	19
Yorke Peninsula Council	0	3	7	20	30	0	3	13	16
<b>Sub-total</b>	<b>15</b>	<b>78</b>	<b>140</b>	<b>408</b>	<b>641</b>	<b>17</b>	<b>94</b>	<b>197</b>	<b>308</b>
<b>TOTAL</b>	<b>25</b>	<b>135</b>	<b>272</b>	<b>761</b>	<b>1193</b>	<b>27</b>	<b>168</b>	<b>384</b>	<b>579</b>

Table 24c: Crashes and Casualties by Local Government Area & Severity, Rural: All Roads

Local Government Area	Crashes				Casualties				
	Fatal Crashes	Serious Injury Crashes	Minor Injury Crashes	Property Damage Crashes	ALL CRASHES	Fatalities	Serious Injuries	Minor Injuries	ALL CASUALTIES
Adelaide Hills Council, The	0	0	0	0	0	0	0	0	0
Adelaide Plains Council	0	5	9	23	37	0	5	12	17
Alexandrina Council	2	24	40	99	165	2	27	60	89
Anangu Pitjantjatjara Yankunytjatjara	0	5	1	0	6	0	5	1	6
The Barossa Council	1	11	34	73	119	1	12	45	58
Barunga West Council	0	3	8	12	23	0	7	8	15
Berri Barmera Council	0	1	10	37	48	0	1	12	13
District Council of Ceduna	0	3	1	7	11	0	3	2	5
Clare and Gilbert Valleys Council	0	6	15	24	45	0	6	23	29
District Council of Cleve	1	1	1	5	8	1	1	1	3
District Council of Coober Pedy	0	1	2	3	6	0	1	2	3
Coorong District Council	0	7	14	24	45	0	9	21	30
Copper Coast Council	1	3	11	33	48	1	4	14	19
District Council of Elliston	0	0	3	3	6	0	0	4	4
The Flinders Ranges Council	0	0	5	1	6	0	0	5	5
District Council of Franklin Harbour	0	1	3	1	5	0	1	5	6
Regional Council of Goyder	0	3	4	15	22	0	3	6	9
District Council of Grant	3	6	11	22	42	3	11	21	35
Kangaroo Island Council	3	2	3	17	25	3	2	4	9
District Council of Karoonda East Murray	0	1	0	8	9	0	1	2	3
District Council of Kimba	0	1	0	8	9	0	1	0	1
Kingston District Council	0	2	5	3	10	0	3	5	8
Light Regional Council	2	5	14	43	64	2	6	18	26
District Council of Lower Eyre Peninsula	1	3	7	17	28	1	4	10	15
District Council of Loxton Waikerie	0	5	6	36	47	0	6	9	15
Mid Murray Council	1	9	15	40	65	1	9	17	27
<b>Sub-total</b>	<b>15</b>	<b>108</b>	<b>222</b>	<b>554</b>	<b>899</b>	<b>15</b>	<b>128</b>	<b>307</b>	<b>450</b>

Table 24c: Crashes and Casualties by Local Government Area & Severity, Rural: All Roads (cont.)

Local Government Area	Crashes				Casualties				
	Fatal Crashes	Serious Injury Crashes	Minor Injury Crashes	Property Damage Crashes	ALL CRASHES	Fatalities	Serious Injuries	Minor Injuries	ALL CASUALTIES
City of Mount Gambier	0	7	18	73	98	0	7	27	34
District Council of Mount Remarkable	1	2	3	4	10	1	2	3	6
Rural City of Murray Bridge	1	11	28	73	113	1	12	31	44
Naracoorte Lucindale Council	2	6	4	11	23	2	7	5	14
Northern Areas Council	0	2	8	7	17	0	2	9	11
District Council of Orroroo Carrieton	1	1	1	1	4	1	1	2	4
Pastoral Unincorporated	3	18	19	57	97	3	23	26	52
District Council of Peterborough	0	1	2	4	7	0	1	3	4
Port Augusta City Council	2	6	12	45	65	2	8	12	22
City of Port Lincoln	1	2	10	36	49	1	3	12	16
Port Pirie Regional Council	2	4	18	55	79	2	5	26	33
Renmark Paringa Council	0	3	14	26	43	0	3	24	27
District Council of Robe	0	6	3	6	15	0	6	5	11
Municipal Council of Roxby Downs	0	2	3	6	11	0	2	3	5
Southern Mallee District Council	0	3	5	4	12	0	4	7	11
District Council of Streaky Bay	0	0	3	3	6	0	0	4	4
Tatiara District Council	3	6	9	19	37	3	7	10	20
District Council of Tumby Bay	0	2	2	5	9	0	2	3	5
Unincorporated (Eastern)	0	0	0	1	1	0	0	0	0
City of Victor Harbor	0	5	12	45	62	0	6	14	20
Wakefield Regional Council	3	12	11	45	71	5	14	18	37
Wattle Range Council	1	9	15	33	58	1	11	19	31
City of Whyalla	1	9	7	41	58	1	11	7	19
Wudinna District Council	0	2	5	4	11	0	2	6	8
District Council of Yankalilla	1	4	14	38	57	1	6	21	28
Yorke Peninsula Council	0	6	14	42	62	0	6	22	28
<b>Sub-total</b>	<b>22</b>	<b>129</b>	<b>240</b>	<b>684</b>	<b>1075</b>	<b>24</b>	<b>151</b>	<b>319</b>	<b>494</b>
<b>TOTAL</b>	<b>37</b>	<b>237</b>	<b>462</b>	<b>1238</b>	<b>1974</b>	<b>39</b>	<b>279</b>	<b>626</b>	<b>944</b>

## Table 25: Top Intersections with highest number of Casualty Crashes 2022

Intersection	Current Year	Previous Years			
	2022	2021	2020	2019	2018
REGENCY ROAD - MAIN NORTH ROAD	10	6	4	6	7
STURT ROAD - MARION ROAD	8	5	7	9	11
THE GOLDEN WAY - THE GROVE WAY	8	4	2	7	1
STURT ROAD - MORPHETT ROAD	6	3	1	4	3
BEACH ROAD - DYSON ROAD	6	6	2	2	2
CHURCHILL ROAD - REGENCY ROAD	6	2	1	5	3
DARLEY ROAD - GAMEAU ROAD	6	1	2	2	1
MAIN NORTH ROAD - FROST ROAD	6	2	1	3	2
MAIN NORTH ROAD - PHILIP HIGHWAY	6	0	0	5	9
MAIN NORTH ROAD - GRAND JUNCTION ROAD	5	5	4	2	8
DAWS ROAD - (MAIN) SOUTH ROAD	5	7	2	5	3
FULLARTON ROAD - KITCHENER STREET	5	5	4	2	4
GALLIPOLI I/CH RAMP - ANZAC HIGHWAY	5	1	2	4	6
GRANGE ROAD - FINDON ROAD	5	5	2	0	5
HENLEY BEACH ROAD - (MAIN) SOUTH ROAD	5	7	2	4	3
KENSINGTON ROAD - GEORGE - NORWOOD STREET	5	2	4	2	4
ANZAC HIGHWAY - RICHMOND ROAD	5	3	4	2	3

Table 26: Motor Vehicles Involved in &amp; Responsible for Crashes by Region and Severity

Vehicle Type & Region	Fatal Crashes		Serious Injury Crashes		Minor Injury Crashes		Property Damage Crashes		ALL CRASHES	
	Involved	Responsible	Involved	Responsible	Involved	Responsible	Involved	Responsible	Involved	Responsible
<b>PASSENGER VEHICLES</b>										
Metropolitan	28	18	393	204	4147	2055	12771	6301	17339	8578
Rural	33	24	228	163	568	378	1540	960	2369	1525
<b>Sub-total</b>	<b>61</b>	<b>42</b>	<b>621</b>	<b>367</b>	<b>4715</b>	<b>2433</b>	<b>14311</b>	<b>7261</b>	<b>19708</b>	<b>10103</b>
<b>LIGHT TRUCKS (≤ 4.5 tonnes)</b>										
Metropolitan	0	0	0	0	30	18	58	26	88	44
Rural	1	1	1	0	1	1	11	6	14	8
<b>Sub-total</b>	<b>1</b>	<b>1</b>	<b>1</b>	<b>0</b>	<b>31</b>	<b>19</b>	<b>69</b>	<b>32</b>	<b>102</b>	<b>52</b>
<b>HEAVY VEHICLES<sup>1</sup></b>										
Metropolitan	5	2	10	5	95	52	998	652	1108	711
Rural	6	2	19	12	27	15	199	128	251	157
<b>Sub-total</b>	<b>11</b>	<b>4</b>	<b>29</b>	<b>17</b>	<b>122</b>	<b>67</b>	<b>1197</b>	<b>780</b>	<b>1359</b>	<b>868</b>
<b>BUSES</b>										
Metropolitan	0	0	1	0	18	7	271	146	290	153
Rural	0	0	2	0	2	0	16	8	20	8
<b>Sub-total</b>	<b>0</b>	<b>0</b>	<b>3</b>	<b>0</b>	<b>20</b>	<b>7</b>	<b>287</b>	<b>154</b>	<b>310</b>	<b>161</b>
<b>MOTORCYCLES</b>										
Metropolitan	6	6	82	56	226	115	280	143	594	320
Rural	7	6	63	46	51	35	29	18	150	105
<b>Sub-total</b>	<b>13</b>	<b>12</b>	<b>145</b>	<b>102</b>	<b>277</b>	<b>150</b>	<b>309</b>	<b>161</b>	<b>744</b>	<b>425</b>
<b>BICYCLISTS</b>										
Metropolitan	3	2	47	22	242	81	245	64	537	169
Rural	0	0	10	6	11	5	23	9	44	20
<b>Sub-total</b>	<b>3</b>	<b>2</b>	<b>57</b>	<b>28</b>	<b>253</b>	<b>86</b>	<b>268</b>	<b>73</b>	<b>581</b>	<b>189</b>
<b>OTHER</b>										
Metropolitan	2	1	5	3	29	20	131	77	167	101
Rural	2	0	3	1	4	3	34	13	43	17
<b>Sub-total</b>	<b>4</b>	<b>1</b>	<b>8</b>	<b>4</b>	<b>33</b>	<b>23</b>	<b>165</b>	<b>90</b>	<b>210</b>	<b>118</b>
<b>TOTAL</b>										
Metropolitan	44	29	538	290	4787	2348	14754	7409	20123	10076
Rural	49	33	326	228	664	437	1852	1142	2891	1840
<b>TOTAL</b>	<b>93</b>	<b>62</b>	<b>864</b>	<b>518</b>	<b>5451</b>	<b>2785</b>	<b>16606</b>	<b>8551</b>	<b>23014</b>	<b>11916</b>

<sup>1</sup> Excludes Buses and other defined special vehicles.**Note:** Excludes data for crashes where responsibility not attributed to a road user. For example, responsibility not recorded or unriden animal responsible.

**Table 27: Crashes and Casualties by Vehicle Movement of Motor Vehicle Responsible and Severity (excl. Pedestrian)**

Vehicle Movement of Unit Responsible	Crashes					Casualties			
	Fatal Crashes	Serious Injury Crashes	Minor Injury Crashes	Property Damage Crashes	ALL CRASHES	Fatalities	Serious Injuries	Minor Injuries	ALL CASUALTIES
Right Turn	7	69	573	1611	2260	7	82	754	843
Left Turn	3	16	162	521	702	3	20	182	205
U Turn	1	11	51	189	252	1	13	60	74
Swerving	1	17	121	683	822	1	17	143	161
Reversing	0	3	11	102	116	0	3	11	14
Stopped on Carriageway	0	0	0	3	3	0	0	0	0
Straight Ahead	43	365	1657	4778	6843	46	419	2084	2549
Entering Private Driveway	0	9	33	97	139	0	9	38	47
Leaving Private Driveway	2	14	108	291	415	2	14	122	138
Parked	0	2	15	28	45	0	2	15	17
Parking - Angle	0	1	3	9	13	0	1	4	5
Parking - Parallel	0	0	5	35	40	0	0	5	5
Unparking - Angle	0	1	3	11	15	0	1	3	4
Unparking - Parallel	0	0	13	75	88	0	0	13	13
Overtaking - on Right	4	6	27	88	125	4	8	31	43
Overtaking - on Left	0	4	3	30	37	0	4	3	7
Other	1	0	0	0	1	1	0	0	1
On Pedestrian Crossing	0	0	0	0	0	0	0	0	0
<b>TOTAL</b>	<b>62</b>	<b>518</b>	<b>2785</b>	<b>8551</b>	<b>11916</b>	<b>65</b>	<b>593</b>	<b>3468</b>	<b>4126</b>

**Note:**

Excludes data for crashes where responsibility not attributed to a road user. For example, responsibility not recorded or unriden animal responsible.

**Table 28: Crashes and Casualties by Pedestrian Responsible, Movement and Severity**

Pedestrian Movement	Crashes					Casualties			
	Fatal Crashes	Serious Injury Crashes	Minor Injury Crashes	Property Damage Crashes	ALL CRASHES	Fatalities	Serious Injuries	Minor Injuries	ALL CASUALTIES
Walking on Footpath	0	0	0	0	0	0	0	0	0
On Pedestrian Crossing	0	1	2	0	3	0	1	2	3
Within 30m of Pedestrian Crossing	0	0	0	2	2	0	0	0	0
Alighted from Parked Vehicle	0	1	1	3	5	0	1	2	3
Walked from between Parked Vehicles	1	1	0	0	2	1	1	0	2
Walking on Road	3	6	6	12	27	3	6	6	15
Walking on Road - Against the Traffic	0	0	1	2	3	0	0	1	1
Pushing or Working on Vehicle	0	0	1	0	1	0	0	1	1
Playing on Roadway	0	0	0	0	0	0	0	0	0
Crossing without Control	0	27	58	60	145	0	27	60	87
Other (e.g. Police on Traffic Control)	1	1	0	0	2	1	1	0	2
Crossing with Traffic Signals	0	10	12	11	33	0	10	12	22
Walking on Footpath	0	0	0	0	0	0	0	0	0
<b>TOTAL</b>	<b>5</b>	<b>47</b>	<b>81</b>	<b>90</b>	<b>223</b>	<b>5</b>	<b>47</b>	<b>84</b>	<b>136</b>



Table 29: Crashes by Motor Vehicle Type Involved<sup>1</sup> and Severity

Type of Vehicle <sup>1</sup>	Fatal Crashes	Serious Injury Crashes	Minor Injury Crashes	Property Damage Crashes	ALL CRASHES
Passenger Vehicle	52	453	2693	8487	11685
Light Truck (≤ 4.5 tonnes)	1	1	31	69	102
Heavy Truck	14	33	131	1278	1456
Bus	0	3	19	286	308
Motorcycles / Scooters	13	140	269	297	719
Bicycles	3	54	246	267	570
Pedestrian	8	76	156	158	398
Other	1	2	16	22	41

Table 30: Crashes and Casualties by Speed Involvement<sup>2</sup> and Severity

Speed Involvement <sup>2</sup> & Region	Crashes					Casualties			
	Fatal Crashes	Serious Injury Crashes	Minor Injury Crashes	Property Damage Crashes	ALL CRASHES	Fatalities	Serious Injuries	Minor Injuries	ALL CASUALTIES
<b>METROPOLITAN</b>									
Yes									
No	16	78	202	638	934	17	96	269	382
<b>Sub-total</b>	<b>15</b>	<b>260</b>	<b>2242</b>	<b>6930</b>	<b>9447</b>	<b>15</b>	<b>277</b>	<b>2705</b>	<b>2997</b>
<b>RURAL</b>	<b>31</b>	<b>338</b>	<b>2444</b>	<b>7568</b>	<b>10381</b>	<b>32</b>	<b>373</b>	<b>2974</b>	<b>3379</b>
Yes									
No	14	98	112	209	433	14	113	155	282
<b>Sub-total</b>	<b>23</b>	<b>139</b>	<b>350</b>	<b>1029</b>	<b>1541</b>	<b>25</b>	<b>166</b>	<b>471</b>	<b>662</b>
<b>TOTAL</b>	<b>37</b>	<b>237</b>	<b>462</b>	<b>1238</b>	<b>1974</b>	<b>39</b>	<b>279</b>	<b>626</b>	<b>944</b>

<sup>1</sup> The vehicle type categories are not mutually exclusive and must not be added together. It is where the crash has involved at least one of the vehicle types. Where one crash has involved two or more of the same vehicle type, then it has been counted once.

<sup>2</sup> Speed contribution definition is located under *Definitions & Explanations*.

# ROAD CASUALTIES IN 2022

---

- Road Users
- Seatbelts & Helmets
- Age & Sex Distribution
- Alcohol
- Drug
- Licence
- Involvement & Responsibility

Table 31: Casualties by Road User Type, Severity, Age and Sex

Road User Types	Sex	0-15			16-19			20-24			25-29			30-39			40-49			50-59			60-69			70+			Unknown			ALL CASUALTIES				
		F	SI	MI	F	SI	MI	F	SI	MI	F	SI	MI	F	SI	MI	F	SI	MI	F	SI	MI	F	SI	MI	F	SI	MI	F	SI	MI					
<b>VEHICLE OCCUPANT</b>																																				
Driver	M	0	0	0	3	17	86	3	21	117	2	24	97	3	27	174	5	19	141	2	26	140	2	19	118	6	18	139	0	2	5	26	173	1017		
	F	0	0	1	1	5	84	1	11	138	3	9	136	2	15	266	1	12	194	1	15	158	1	5	117	2	23	126	0	0	3	12	95	1223		
	<b>Sub-total</b>	<b>0</b>	<b>0</b>	<b>1</b>	<b>4</b>	<b>22</b>	<b>170</b>	<b>4</b>	<b>32</b>	<b>255</b>	<b>5</b>	<b>33</b>	<b>233</b>	<b>5</b>	<b>42</b>	<b>440</b>	<b>6</b>	<b>31</b>	<b>335</b>	<b>3</b>	<b>41</b>	<b>298</b>	<b>3</b>	<b>24</b>	<b>235</b>	<b>8</b>	<b>41</b>	<b>265</b>	<b>0</b>	<b>2</b>	<b>11</b>	<b>38</b>	<b>268</b>	<b>2243</b>		
Passenger	M	1	8	72	3	5	35	0	8	27	0	9	22	0	11	28	1	7	23	0	4	12	1	0	13	0	5	17	0	0	12	6	57	261		
	F	0	8	92	1	4	41	0	3	52	1	4	21	0	5	42	1	3	33	0	6	36	0	4	38	0	11	47	0	1	2	3	49	404		
	<b>Sub-total</b>	<b>1</b>	<b>16</b>	<b>164</b>	<b>4</b>	<b>9</b>	<b>76</b>	<b>0</b>	<b>11</b>	<b>79</b>	<b>1</b>	<b>13</b>	<b>43</b>	<b>0</b>	<b>16</b>	<b>70</b>	<b>2</b>	<b>10</b>	<b>56</b>	<b>0</b>	<b>10</b>	<b>48</b>	<b>1</b>	<b>4</b>	<b>51</b>	<b>0</b>	<b>16</b>	<b>64</b>	<b>0</b>	<b>1</b>	<b>17</b>	<b>9</b>	<b>106</b>	<b>668</b>		
<b>MOTORCYCLIST</b>																																				
Rider	M	0	0	0	1	14	26	2	10	38	2	17	25	2	19	34	2	25	37	2	28	43	2	10	31	0	6	3	0	0	1	13	129	238		
	F	0	1	0	0	3	2	0	2	5	0	1	1	0	2	8	0	0	5	0	1	5	0	0	3	0	0	0	0	0	0	0	10	29	29	
	<b>Sub-total</b>	<b>0</b>	<b>1</b>	<b>0</b>	<b>1</b>	<b>17</b>	<b>28</b>	<b>2</b>	<b>12</b>	<b>43</b>	<b>2</b>	<b>18</b>	<b>26</b>	<b>2</b>	<b>21</b>	<b>42</b>	<b>2</b>	<b>25</b>	<b>42</b>	<b>2</b>	<b>29</b>	<b>48</b>	<b>2</b>	<b>10</b>	<b>34</b>	<b>0</b>	<b>6</b>	<b>3</b>	<b>0</b>	<b>2</b>	<b>13</b>	<b>139</b>	<b>268</b>			
Pillion Passenger	M	0	0	0	0	1	0	0	0	0	0	0	0	0	0	0	0	1	0	0	0	0	0	0	0	0	0	0	0	0	0	0	2	0	0	
	F	0	2	1	0	0	1	0	0	0	0	1	0	0	0	3	0	2	4	0	2	0	0	0	0	0	0	0	0	0	0	0	6	10	10	
	<b>Sub-total</b>	<b>0</b>	<b>2</b>	<b>1</b>	<b>0</b>	<b>1</b>	<b>1</b>	<b>0</b>	<b>0</b>	<b>0</b>	<b>0</b>	<b>1</b>	<b>0</b>	<b>0</b>	<b>3</b>	<b>0</b>	<b>3</b>	<b>4</b>	<b>0</b>	<b>2</b>	<b>0</b>	<b>0</b>	<b>0</b>	<b>0</b>	<b>0</b>	<b>0</b>	<b>0</b>	<b>0</b>	<b>0</b>	<b>1</b>	<b>0</b>	<b>8</b>	<b>11</b>	<b>11</b>		
<b>PEDESTRIAN</b>																																				
M	M	0	7	17	0	3	7	1	2	2	0	6	3	1	6	10	1	3	7	0	3	5	1	8	8	1	6	12	0	3	2	5	47	73		
	F	0	3	15	0	2	1	0	5	3	0	1	9	0	3	13	1	2	10	0	3	6	0	3	8	2	7	16	0	0	0	3	29	81		
	<b>Sub-total</b>	<b>0</b>	<b>10</b>	<b>32</b>	<b>0</b>	<b>5</b>	<b>8</b>	<b>1</b>	<b>7</b>	<b>5</b>	<b>0</b>	<b>7</b>	<b>12</b>	<b>1</b>	<b>9</b>	<b>23</b>	<b>2</b>	<b>5</b>	<b>17</b>	<b>0</b>	<b>6</b>	<b>11</b>	<b>1</b>	<b>11</b>	<b>16</b>	<b>3</b>	<b>13</b>	<b>28</b>	<b>0</b>	<b>3</b>	<b>3</b>	<b>8</b>	<b>76</b>	<b>155</b>		
<b>BICYCLIST</b>																																				
M	M	0	4	24	0	2	10	0	1	11	0	2	16	0	3	22	0	7	33	2	9	32	1	9	18	0	7	21	0	0	4	3	44	191		
	F	0	1	4	0	0	0	0	0	1	0	2	9	0	2	7	0	0	8	0	3	9	0	0	9	0	0	5	0	1	0	0	9	52	52	
	<b>Sub-total</b>	<b>0</b>	<b>5</b>	<b>28</b>	<b>0</b>	<b>2</b>	<b>10</b>	<b>0</b>	<b>1</b>	<b>12</b>	<b>0</b>	<b>4</b>	<b>25</b>	<b>0</b>	<b>5</b>	<b>29</b>	<b>0</b>	<b>7</b>	<b>41</b>	<b>2</b>	<b>12</b>	<b>41</b>	<b>1</b>	<b>9</b>	<b>27</b>	<b>0</b>	<b>7</b>	<b>26</b>	<b>0</b>	<b>1</b>	<b>6</b>	<b>3</b>	<b>53</b>	<b>245</b>		
<b>OTHER ROAD USER</b>																																				
M	M	0	0	0	0	0	0	0	1	0	0	0	1	0	0	1	0	0	3	0	0	1	0	1	0	0	0	0	0	0	0	0	2	6	6	
	F	0	0	0	0	0	0	0	0	1	0	0	1	0	0	1	0	0	0	0	0	0	0	0	0	0	0	1	0	0	0	0	0	0	4	4
	<b>Sub-total</b>	<b>0</b>	<b>0</b>	<b>0</b>	<b>0</b>	<b>0</b>	<b>0</b>	<b>0</b>	<b>1</b>	<b>1</b>	<b>0</b>	<b>0</b>	<b>2</b>	<b>0</b>	<b>0</b>	<b>2</b>	<b>0</b>	<b>0</b>	<b>3</b>	<b>0</b>	<b>0</b>	<b>1</b>	<b>0</b>	<b>1</b>	<b>0</b>	<b>0</b>	<b>0</b>	<b>1</b>	<b>0</b>	<b>0</b>	<b>0</b>	<b>0</b>	<b>2</b>	<b>10</b>	<b>10</b>	
<b>ALL ROAD USERS</b>																																				
M	M	1	19	113	7	42	164	6	43	195	4	58	164	6	66	269	9	62	244	6	70	233	7	47	188	7	42	192	0	5	24	53	454	1786		
	F	0	15	113	2	14	129	1	21	200	4	17	178	2	27	340	3	19	254	1	30	214	1	12	175	4	41	195	0	2	5	18	198	1803		
	<b>TOTAL</b>	<b>1</b>	<b>34</b>	<b>226</b>	<b>9</b>	<b>56</b>	<b>293</b>	<b>7</b>	<b>64</b>	<b>395</b>	<b>8</b>	<b>75</b>	<b>342</b>	<b>8</b>	<b>93</b>	<b>609</b>	<b>12</b>	<b>81</b>	<b>498</b>	<b>7</b>	<b>100</b>	<b>447</b>	<b>8</b>	<b>59</b>	<b>363</b>	<b>11</b>	<b>83</b>	<b>387</b>	<b>0</b>	<b>7</b>	<b>40</b>	<b>71</b>	<b>652</b>	<b>3600</b>		

F - Fatality/Life lost, SI - Serious Injury, MI - Minor Injury

Table 32: Casualties by Unit Type and Severity

Unit Type	Fatalities	Serious Injuries	Minor Injuries	ALL CASUALTIES
Passenger Vehicle	41	356	2853	3250
Light Truck (≤ 4.5 tonnes)	1	1	14	16
Heavy Vehicle <sup>1</sup>	5	17	36	58
Bus	0	0	8	8
Motorcycle	13	147	279	439
Bicycle	3	53	245	301
Pedestrian	8	76	155	239
Other	0	2	10	12
<b>TOTAL</b>	<b>71</b>	<b>652</b>	<b>3600</b>	<b>4323</b>

Table 33: Motor Vehicle Casualties by Position in Vehicle and Severity

(excl. Bicycles)

Position in Vehicle	Fatalities	Serious Injuries	Minor Injuries	ALL CASUALTIES
<b>FRONT SEAT PASSENGER</b>				
Driver	38	267	2243	2548
Middle	0	0	4	4
Left	5	60	412	477
<b>REAR SEAT PASSENGER</b>				
Right	0	12	73	85
Middle	1	6	29	36
Left	1	14	103	118
<b>CHILD NURSED</b>				
Front	0	0	0	1
Rear	0	0	0	0
<b>UTILITY/TRUCK</b>				
Rear	0	1	0	1
<b>VAN</b>				
Passenger	0	0	0	0
<b>BUS</b>				
Passenger	0	0	5	5
<b>MOTORCYCLE</b>				
Rider	13	139	268	420
Passenger	0	8	11	19
<b>TOWED VEHICLE</b>				
Occupant	0	2	0	2
<b>UNKNOWN/OTHER</b>	2	12	42	56
<b>Sub-total</b>	<b>60</b>	<b>521</b>	<b>3190</b>	<b>3772</b>
<b>TOTAL<sup>2</sup></b>	<b>71</b>	<b>652</b>	<b>3600</b>	<b>4323</b>

<sup>1</sup> Excludes Buses.<sup>2</sup> Includes not applicable user types.

Table 34: Casualties by Road User Type, Safety Device and Severity

Road User Type & Safety Device Use <sup>1</sup>	Fatalities	Serious Injuries	Minor Injuries	ALL CASUALTIES
<b>DRIVER</b>				
Fitted - Worn	23	211	2107	2341
Fitted - Not Worn	12	13	31	56
Fitted - Unknown if Worn	2	43	101	146
Not Fitted	1	0	4	5
Unknown	0	1	0	1
<b>Sub-total</b>	<b>38</b>	<b>268</b>	<b>2243</b>	<b>2549</b>
<b>PASSENGER</b>				
Fitted - Worn	5	66	594	665
Fitted - Not Worn	2	12	13	27
Fitted - Unknown if Worn	0	16	24	40
Child Restraint - Worn	1	3	2	6
Child Restraint - Not Worn	0	5	31	36
Not Fitted	0	3	4	7
Not Applicable	0	1	0	1
Unknown	1	0	0	1
<b>Sub-total</b>	<b>9</b>	<b>106</b>	<b>668</b>	<b>783</b>
<b>MOTORCYCLE RIDER/PASSENGER</b>				
Helmet Worn	13	131	265	488
Helmet - Not Worn	0	6	6	11
Unknown	0	10	8	13
<b>Sub-total</b>	<b>13</b>	<b>147</b>	<b>279</b>	<b>512</b>
<b>BICYCLIST RIDER/PASSENGER</b>				
Helmet Worn	2	48	227	277
Helmet - Not Worn	1	3	12	16
Unknown	0	2	6	8
<b>Sub-total</b>	<b>3</b>	<b>53</b>	<b>245</b>	<b>301</b>
<b>ALL CASUALTIES</b>				
Device Worn	43	461	3229	3733
Device Not Worn	17	41	76	134
Unknown/Not Applicable	3	74	140	217
<b>Sub-total</b>	<b>63</b>	<b>576</b>	<b>3445</b>	<b>4084</b>
<b>TOTAL<sup>2</sup></b>	<b>71</b>	<b>652</b>	<b>3600</b>	<b>4323</b>

<sup>1</sup> Police reporting of safety device usage is often not based on direct observation by police officers and may be reliant upon statements by the casualties themselves or other involved parties.

<sup>2</sup> Includes not applicable safety device use/users (pedestrians).

Table 35: Driver and Motorcycle Rider Casualties with BAC

Severity	Sex	Blood Alcohol Concentration						Not Tested/ Unknown	TOTAL
		Negative	0.001- 0.049	0.050- 0.079	0.080- 0.149	0.150- 0.199	.200+		
Minor Injury	M	729	8	5	20	25	16	452	1255
	F	667	2	2	8	6	9	559	1253
	<b>Sub-total<sup>1</sup></b>	<b>1396</b>	<b>10</b>	<b>7</b>	<b>28</b>	<b>31</b>	<b>25</b>	<b>1014</b>	<b>2511</b>
Serious Injury	M	196	10	6	20	5	11	54	302
	F	76	0	1	2	1	3	22	105
	<b>Sub-total<sup>1</sup></b>	<b>272</b>	<b>10</b>	<b>7</b>	<b>22</b>	<b>6</b>	<b>14</b>	<b>76</b>	<b>407</b>
Fatalities	M	21	5	0	2	5	5	1	39
	F	9	0	0	1	0	1	1	12
	<b>Sub-total<sup>1</sup></b>	<b>30</b>	<b>5</b>	<b>0</b>	<b>3</b>	<b>5</b>	<b>6</b>	<b>2</b>	<b>51</b>
ALL CASUALTIES	M	946	23	11	42	35	32	507	1596
	F	752	2	3	11	7	13	582	1370
	<b>TOTAL<sup>1</sup></b>	<b>1698</b>	<b>25</b>	<b>14</b>	<b>53</b>	<b>42</b>	<b>45</b>	<b>1092</b>	<b>2969</b>

Table 36: Driver and Motorcycle Rider Casualties with Drugs

Age	Sex	Drugs					Combination of drugs <sup>2</sup>	Not Tested/ Unknown	TOTAL
		Negative	THC	MDMA	Meth				
Minor Injury	M	709	51	0	20	7	468	1255	
	F	660	19	1	7	4	562	1253	
	<b>Sub-total<sup>1</sup></b>	<b>1369</b>	<b>70</b>	<b>1</b>	<b>27</b>	<b>11</b>	<b>1033</b>	<b>2511</b>	
Serious Injury	M	190	20	0	24	3	65	302	
	F	71	4	1	5	1	23	105	
	<b>Sub-total<sup>1</sup></b>	<b>261</b>	<b>24</b>	<b>1</b>	<b>29</b>	<b>4</b>	<b>88</b>	<b>407</b>	
Fatalities	M	28	6	0	4	0	1	39	
	F	11	0	0	0	0	1	12	
	<b>Sub-total<sup>1</sup></b>	<b>39</b>	<b>6</b>	<b>0</b>	<b>4</b>	<b>0</b>	<b>2</b>	<b>51</b>	
ALL CASUALTIES	M	927	77	0	48	10	534	1596	
	F	742	23	2	12	5	586	1370	
	<b>TOTAL<sup>1</sup></b>	<b>1669</b>	<b>100</b>	<b>2</b>	<b>60</b>	<b>15</b>	<b>1123</b>	<b>2969</b>	

<sup>1</sup> Unknown sex included.<sup>2</sup> Two or more of THC, MDMA or Meth.

Table 37a: Road User Involved in & Responsible for Crashes by Age & Sex:  
Fatal Crashes

Age	Sex	Drivers		Motorcycle Riders		Bicycle Riders		Pedestrians		Other Road Users		ALL ROAD USERS	
		Involved	Responsible	Involved	Responsible	Involved	Responsible	Involved	Responsible	Involved	Responsible	Involved	Responsible
0-15	M	0	0	0	0	0	0	0	0	0	0	0	0
	F	0	0	0	0	0	0	0	0	0	0	0	0
	<b>Sub-total<sup>1</sup></b>	<b>0</b>	<b>0</b>	<b>0</b>	<b>0</b>	<b>0</b>	<b>0</b>	<b>0</b>	<b>0</b>	<b>0</b>	<b>0</b>	<b>0</b>	<b>0</b>
16-19	M	5	5	1	1	0	0	0	0	0	0	6	6
	F	2	1	0	0	0	0	0	0	0	0	2	1
	<b>Sub-total<sup>1</sup></b>	<b>7</b>	<b>6</b>	<b>1</b>	<b>1</b>	<b>0</b>	<b>0</b>	<b>0</b>	<b>0</b>	<b>0</b>	<b>0</b>	<b>8</b>	<b>7</b>
20-24	M	6	3	2	2	0	0	1	1	0	0	9	6
	F	2	1	0	0	0	0	0	0	0	0	2	1
	<b>Sub-total<sup>1</sup></b>	<b>8</b>	<b>4</b>	<b>2</b>	<b>2</b>	<b>0</b>	<b>0</b>	<b>1</b>	<b>1</b>	<b>0</b>	<b>0</b>	<b>11</b>	<b>7</b>
25-29	M	2	2	2	2	0	0	0	0	0	0	4	4
	F	7	5	0	0	0	0	0	0	0	0	7	5
	<b>Sub-total<sup>1</sup></b>	<b>9</b>	<b>7</b>	<b>2</b>	<b>2</b>	<b>0</b>	<b>0</b>	<b>0</b>	<b>0</b>	<b>0</b>	<b>0</b>	<b>11</b>	<b>9</b>
30-39	M	5	4	2	2	0	0	1	1	0	0	8	7
	F	3	3	0	0	0	0	0	0	0	0	3	3
	<b>Sub-total<sup>1</sup></b>	<b>8</b>	<b>7</b>	<b>2</b>	<b>2</b>	<b>0</b>	<b>0</b>	<b>1</b>	<b>1</b>	<b>0</b>	<b>0</b>	<b>11</b>	<b>10</b>
40-49	M	11	6	2	2	0	0	1	0	0	0	14	8
	F	2	2	0	0	0	0	1	1	0	0	3	3
	<b>Sub-total<sup>1</sup></b>	<b>13</b>	<b>8</b>	<b>2</b>	<b>2</b>	<b>0</b>	<b>0</b>	<b>2</b>	<b>1</b>	<b>0</b>	<b>0</b>	<b>17</b>	<b>11</b>
50-59	M	11	5	2	2	2	1	0	0	0	0	15	8
	F	1	1	0	0	0	0	0	0	0	0	1	1
	<b>Sub-total<sup>1</sup></b>	<b>12</b>	<b>6</b>	<b>2</b>	<b>2</b>	<b>2</b>	<b>1</b>	<b>0</b>	<b>0</b>	<b>0</b>	<b>0</b>	<b>16</b>	<b>9</b>
60-69	M	7	3	2	1	1	1	1	0	0	0	11	5
	F	1	1	0	0	0	0	0	0	0	0	1	1
	<b>Sub-total<sup>1</sup></b>	<b>8</b>	<b>4</b>	<b>2</b>	<b>1</b>	<b>1</b>	<b>1</b>	<b>1</b>	<b>0</b>	<b>0</b>	<b>0</b>	<b>12</b>	<b>6</b>
70+	M	6	4	0	0	0	0	1	1	0	0	7	5
	F	2	2	0	0	0	0	2	1	0	0	4	3
	<b>Sub-total<sup>1</sup></b>	<b>8</b>	<b>6</b>	<b>0</b>	<b>0</b>	<b>0</b>	<b>0</b>	<b>3</b>	<b>2</b>	<b>0</b>	<b>0</b>	<b>11</b>	<b>8</b>
Unknown	M	0	0	0	0	0	0	0	0	0	0	0	0
	F	0	0	0	0	0	0	0	0	0	0	0	0
	<b>Sub-total<sup>1</sup></b>	<b>2</b>	<b>0</b>	<b>0</b>	<b>0</b>	<b>0</b>	<b>0</b>	<b>0</b>	<b>0</b>	<b>1</b>	<b>0</b>	<b>3</b>	<b>0</b>
ALL AGES	M	53	32	13	12	3	2	5	3	0	0	74	49
	F	20	16	0	0	0	0	3	2	0	0	23	18
	<b>TOTAL<sup>1</sup></b>	<b>75</b>	<b>48</b>	<b>13</b>	<b>12</b>	<b>3</b>	<b>2</b>	<b>8</b>	<b>5</b>	<b>1</b>	<b>0</b>	<b>100</b>	<b>67</b>

<sup>1</sup> Unknown sex included.

Table 37b: Road User Involved in & Responsible for Crashes by Age & Sex:  
Serious Injury Crashes

Age	Sex	Drivers		Motorcycle Riders		Bicycle Riders		Pedestrians		Other Road Users		ALL ROAD USERS	
		Involved	Responsible	Involved	Responsible	Involved	Responsible	Involved	Responsible	Involved	Responsible	Involved	Responsible
0-15	M	0	0	0	0	5	3	7	6	0	1	12	10
	F	0	0	1	1	1	1	4	3	0	0	6	5
	<b>Sub-total<sup>1</sup></b>	<b>0</b>	<b>0</b>	<b>1</b>	<b>1</b>	<b>6</b>	<b>4</b>	<b>11</b>	<b>9</b>	<b>0</b>	<b>1</b>	<b>18</b>	<b>15</b>
16-19	M	32	22	15	10	2	1	3	3	0	0	52	36
	F	18	14	3	3	0	0	2	2	0	0	23	19
	<b>Sub-total<sup>1</sup></b>	<b>50</b>	<b>36</b>	<b>18</b>	<b>13</b>	<b>2</b>	<b>1</b>	<b>5</b>	<b>5</b>	<b>0</b>	<b>0</b>	<b>75</b>	<b>55</b>
20-24	M	40	31	10	7	1	0	2	1	0	0	53	39
	F	25	14	2	2	0	0	5	4	0	0	32	20
	<b>Sub-total<sup>1</sup></b>	<b>65</b>	<b>45</b>	<b>12</b>	<b>9</b>	<b>1</b>	<b>0</b>	<b>7</b>	<b>5</b>	<b>0</b>	<b>0</b>	<b>85</b>	<b>59</b>
25-29	M	49	38	17	14	2	0	6	4	0	0	74	56
	F	24	16	1	0	2	1	1	0	0	0	28	17
	<b>Sub-total<sup>1</sup></b>	<b>73</b>	<b>54</b>	<b>18</b>	<b>14</b>	<b>4</b>	<b>1</b>	<b>7</b>	<b>4</b>	<b>0</b>	<b>0</b>	<b>102</b>	<b>73</b>
30-39	M	79	53	19	15	2	1	6	3	0	0	106	72
	F	38	23	2	0	2	2	3	2	0	0	45	27
	<b>Sub-total<sup>1</sup></b>	<b>117</b>	<b>76</b>	<b>21</b>	<b>15</b>	<b>4</b>	<b>3</b>	<b>9</b>	<b>5</b>	<b>0</b>	<b>0</b>	<b>151</b>	<b>99</b>
40-49	M	51	30	26	15	5	1	3	3	0	0	85	49
	F	35	17	0	0	0	0	2	2	0	0	37	19
	<b>Sub-total<sup>1</sup></b>	<b>86</b>	<b>47</b>	<b>26</b>	<b>15</b>	<b>5</b>	<b>1</b>	<b>5</b>	<b>5</b>	<b>0</b>	<b>0</b>	<b>122</b>	<b>68</b>
50-59	M	56	31	30	22	11	6	3	1	0	0	100	60
	F	22	8	1	1	3	2	3	1	0	0	29	12
	<b>Sub-total<sup>1</sup></b>	<b>78</b>	<b>39</b>	<b>31</b>	<b>23</b>	<b>14</b>	<b>8</b>	<b>6</b>	<b>2</b>	<b>0</b>	<b>0</b>	<b>129</b>	<b>72</b>
60-69	M	47	22	12	8	10	4	8	3	0	0	77	37
	F	23	13	0	0	0	0	3	1	0	0	26	14
	<b>Sub-total<sup>1</sup></b>	<b>70</b>	<b>35</b>	<b>12</b>	<b>8</b>	<b>10</b>	<b>4</b>	<b>11</b>	<b>4</b>	<b>0</b>	<b>0</b>	<b>103</b>	<b>51</b>
70+	M	38	22	6	4	7	3	6	4	0	0	57	33
	F	40	23	0	0	0	0	7	1	0	0	47	24
	<b>Sub-total<sup>1</sup></b>	<b>78</b>	<b>45</b>	<b>6</b>	<b>4</b>	<b>7</b>	<b>3</b>	<b>13</b>	<b>5</b>	<b>0</b>	<b>0</b>	<b>104</b>	<b>57</b>
Unknown	M	2	0	0	0	0	0	3	3	0	1	5	4
	F	0	0	0	0	1	1	0	0	0	0	1	1
	<b>Sub-total<sup>1</sup></b>	<b>16</b>	<b>10</b>	<b>0</b>	<b>0</b>	<b>1</b>	<b>1</b>	<b>3</b>	<b>3</b>	<b>0</b>	<b>1</b>	<b>20</b>	<b>15</b>
ALL AGES	M	394	249	135	95	45	19	47	31	0	2	621	396
	F	225	128	10	7	9	7	30	16	0	0	274	158
	<b>TOTAL<sup>1</sup></b>	<b>633</b>	<b>387</b>	<b>145</b>	<b>102</b>	<b>54</b>	<b>26</b>	<b>77</b>	<b>47</b>	<b>0</b>	<b>2</b>	<b>909</b>	<b>564</b>

<sup>1</sup> Unknown sex included.



Table 37c: Road User Involved in & Responsible for Crashes by Age & Sex:  
Minor Injury Crashes

Age	Sex	Drivers		Motorcycle Riders		Bicycle Riders		Pedestrians		Other Road Users		ALL ROAD USERS	
		Involved	Responsible	Involved	Responsible	Involved	Responsible	Involved	Responsible	Involved	Responsible	Involved	Responsible
0-15	M	1	1	0	0	25	12	17	14	0	1	43	28
	F	1	1	0	0	4	2	14	13	0	0	19	16
	<b>Sub-total<sup>1</sup></b>	<b>2</b>	<b>2</b>	<b>0</b>	<b>0</b>	<b>29</b>	<b>14</b>	<b>31</b>	<b>27</b>	<b>0</b>	<b>1</b>	<b>62</b>	<b>44</b>
16-19	M	182	143	28	21	10	4	7	7	0	0	227	175
	F	154	99	2	1	0	0	1	1	0	0	157	101
	<b>Sub-total<sup>1</sup></b>	<b>336</b>	<b>242</b>	<b>30</b>	<b>22</b>	<b>10</b>	<b>4</b>	<b>8</b>	<b>8</b>	<b>0</b>	<b>0</b>	<b>384</b>	<b>276</b>
20-24	M	315	209	38	20	11	3	2	1	0	0	366	233
	F	245	152	5	4	0	0	4	3	0	0	254	159
	<b>Sub-total<sup>1</sup></b>	<b>560</b>	<b>361</b>	<b>43</b>	<b>24</b>	<b>11</b>	<b>3</b>	<b>6</b>	<b>4</b>	<b>0</b>	<b>0</b>	<b>620</b>	<b>392</b>
25-29	M	281	172	25	16	16	5	3	0	0	0	325	193
	F	242	115	1	1	9	1	9	3	0	0	261	120
	<b>Sub-total<sup>1</sup></b>	<b>523</b>	<b>287</b>	<b>26</b>	<b>17</b>	<b>25</b>	<b>6</b>	<b>12</b>	<b>3</b>	<b>0</b>	<b>0</b>	<b>586</b>	<b>313</b>
30-39	M	515	258	34	15	23	9	11	6	0	1	583	289
	F	432	189	8	3	7	1	13	5	0	0	460	198
	<b>Sub-total<sup>1</sup></b>	<b>947</b>	<b>447</b>	<b>42</b>	<b>18</b>	<b>30</b>	<b>10</b>	<b>24</b>	<b>11</b>	<b>0</b>	<b>1</b>	<b>1043</b>	<b>487</b>
40-49	M	361	174	38	18	32	9	7	5	1	0	439	206
	F	339	131	5	3	8	2	11	3	0	0	363	139
	<b>Sub-total<sup>1</sup></b>	<b>701</b>	<b>306</b>	<b>43</b>	<b>21</b>	<b>40</b>	<b>11</b>	<b>18</b>	<b>8</b>	<b>1</b>	<b>0</b>	<b>803</b>	<b>346</b>
50-59	M	351	161	43	18	31	6	5	3	1	0	431	188
	F	266	98	6	2	9	2	7	3	0	0	288	105
	<b>Sub-total<sup>1</sup></b>	<b>617</b>	<b>259</b>	<b>49</b>	<b>20</b>	<b>40</b>	<b>8</b>	<b>12</b>	<b>6</b>	<b>1</b>	<b>0</b>	<b>719</b>	<b>293</b>
60-69	M	252	116	34	21	18	8	8	2	0	0	312	147
	F	173	78	4	2	9	2	9	2	0	0	195	84
	<b>Sub-total<sup>1</sup></b>	<b>425</b>	<b>194</b>	<b>38</b>	<b>23</b>	<b>27</b>	<b>10</b>	<b>17</b>	<b>4</b>	<b>0</b>	<b>0</b>	<b>507</b>	<b>231</b>
70+	M	256	157	3	2	20	10	12	4	0	0	291	173
	F	188	119	0	0	5	3	16	4	0	0	209	126
	<b>Sub-total<sup>1</sup></b>	<b>444</b>	<b>276</b>	<b>3</b>	<b>2</b>	<b>25</b>	<b>13</b>	<b>28</b>	<b>8</b>	<b>0</b>	<b>0</b>	<b>500</b>	<b>299</b>
Unknown	M	7	5	1	1	3	1	3	2	0	0	14	9
	F	6	5	0	0	0	0	0	0	0	0	6	5
	<b>Sub-total<sup>1</sup></b>	<b>216</b>	<b>159</b>	<b>3</b>	<b>3</b>	<b>10</b>	<b>3</b>	<b>4</b>	<b>2</b>	<b>0</b>	<b>0</b>	<b>233</b>	<b>167</b>
ALL AGES	M	2521	1396	244	132	189	67	75	44	2	2	3031	1641
	F	2046	987	31	16	51	13	84	37	0	0	2212	1053
	<b>TOTAL<sup>1</sup></b>	<b>4771</b>	<b>2533</b>	<b>277</b>	<b>150</b>	<b>247</b>	<b>82</b>	<b>160</b>	<b>81</b>	<b>2</b>	<b>2</b>	<b>5457</b>	<b>2848</b>

<sup>1</sup> Unknown sex included.

Table 37d: Road User Involved in & Responsible for Crashes by Age & Sex:  
Property Damage Crashes

Age	Sex	Drivers		Motorcycle Riders		Bicycle Riders		Pedestrians		Other Road Users		ALL ROAD USERS	
		Involved	Responsible	Involved	Responsible	Involved	Responsible	Involved	Responsible	Involved	Responsible	Involved	Responsible
0-15	M	3	3	1	1	23	11	8	3	0	1	35	19
	F	0	0	0	0	5	1	10	4	0	0	15	5
	<b>Sub-total<sup>1</sup></b>	<b>3</b>	<b>3</b>	<b>1</b>	<b>1</b>	<b>28</b>	<b>12</b>	<b>19</b>	<b>7</b>	<b>0</b>	<b>1</b>	<b>51</b>	<b>24</b>
16-19	M	716	521	16	9	9	4	4	3	0	0	745	537
	F	466	304	3	3	0	0	4	1	0	0	473	308
	<b>Sub-total<sup>1</sup></b>	<b>1184</b>	<b>826</b>	<b>19</b>	<b>12</b>	<b>9</b>	<b>4</b>	<b>8</b>	<b>4</b>	<b>0</b>	<b>0</b>	<b>1220</b>	<b>846</b>
20-24	M	1196	764	40	21	6	1	4	4	0	0	1246	790
	F	794	467	2	1	2	0	6	1	0	0	804	469
	<b>Sub-total<sup>1</sup></b>	<b>1993</b>	<b>1234</b>	<b>42</b>	<b>22</b>	<b>8</b>	<b>1</b>	<b>10</b>	<b>5</b>	<b>0</b>	<b>0</b>	<b>2053</b>	<b>1262</b>
25-29	M	1093	616	22	9	14	2	6	2	0	0	1135	629
	F	671	350	3	0	2	0	4	1	0	0	680	351
	<b>Sub-total<sup>1</sup></b>	<b>1765</b>	<b>967</b>	<b>25</b>	<b>9</b>	<b>16</b>	<b>2</b>	<b>10</b>	<b>3</b>	<b>0</b>	<b>0</b>	<b>1816</b>	<b>981</b>
30-39	M	1749	916	33	19	26	5	8	4	2	0	1818	944
	F	1041	503	1	1	5	2	7	5	0	0	1054	511
	<b>Sub-total<sup>1</sup></b>	<b>2792</b>	<b>1420</b>	<b>34</b>	<b>20</b>	<b>31</b>	<b>7</b>	<b>15</b>	<b>9</b>	<b>2</b>	<b>0</b>	<b>2874</b>	<b>1456</b>
40-49	M	1253	626	31	15	28	3	6	2	0	0	1318	646
	F	856	390	4	1	9	0	6	2	0	0	875	393
	<b>Sub-total<sup>1</sup></b>	<b>2110</b>	<b>1016</b>	<b>35</b>	<b>16</b>	<b>37</b>	<b>3</b>	<b>12</b>	<b>4</b>	<b>0</b>	<b>0</b>	<b>2194</b>	<b>1039</b>
50-59	M	1188	568	34	18	20	1	6	3	2	0	1250	590
	F	623	249	2	2	2	0	4	3	0	1	631	255
	<b>Sub-total<sup>1</sup></b>	<b>1811</b>	<b>817</b>	<b>36</b>	<b>20</b>	<b>22</b>	<b>1</b>	<b>10</b>	<b>6</b>	<b>2</b>	<b>1</b>	<b>1881</b>	<b>845</b>
60-69	M	843	439	22	7	14	3	10	4	0	0	889	453
	F	453	194	0	0	4	1	1	0	0	0	458	195
	<b>Sub-total<sup>1</sup></b>	<b>1297</b>	<b>633</b>	<b>22</b>	<b>7</b>	<b>18</b>	<b>4</b>	<b>11</b>	<b>4</b>	<b>0</b>	<b>0</b>	<b>1348</b>	<b>648</b>
70+	M	588	353	3	0	14	4	9	4	0	0	614	361
	F	439	267	0	0	1	0	7	1	0	0	447	268
	<b>Sub-total<sup>1</sup></b>	<b>1029</b>	<b>621</b>	<b>3</b>	<b>0</b>	<b>15</b>	<b>4</b>	<b>16</b>	<b>5</b>	<b>0</b>	<b>0</b>	<b>1063</b>	<b>630</b>
Unknown	M	35	23	3	3	5	0	5	4	0	0	48	30
	F	12	9	0	0	3	1	7	7	0	0	22	17
	<b>Sub-total<sup>1</sup></b>	<b>1057</b>	<b>754</b>	<b>67</b>	<b>54</b>	<b>78</b>	<b>33</b>	<b>54</b>	<b>43</b>	<b>2</b>	<b>1</b>	<b>1258</b>	<b>885</b>
ALL AGES	M	8664	4829	205	102	159	34	66	33	4	1	9098	4999
	F	5355	2733	15	8	33	5	56	25	0	1	5459	2772
	<b>TOTAL<sup>1</sup></b>	<b>15041</b>	<b>8291</b>	<b>284</b>	<b>161</b>	<b>262</b>	<b>71</b>	<b>165</b>	<b>90</b>	<b>6</b>	<b>3</b>	<b>15758</b>	<b>8616</b>

<sup>1</sup> Unknown sex included.

Table 37e: Road User Involved in & Responsible for Crashes by Age & Sex:  
All Crashes

Age	Sex	Drivers		Motorcycle Riders		Bicycle Riders		Pedestrians		Other Road Users		ALL ROAD USERS	
		Involved	Responsible	Involved	Responsible	Involved	Responsible	Involved	Responsible	Involved	Responsible	Involved	Responsible
0-15	M	4	4	1	1	53	26	32	23	0	3	90	57
	F	1	1	1	1	10	4	28	20	0	0	40	26
	<b>Sub-total<sup>1</sup></b>	<b>5</b>	<b>5</b>	<b>2</b>	<b>2</b>	<b>63</b>	<b>30</b>	<b>61</b>	<b>43</b>	<b>0</b>	<b>3</b>	<b>131</b>	<b>83</b>
16-19	M	935	691	60	41	21	9	14	13	0	0	1030	754
	F	640	418	8	7	0	0	7	4	0	0	655	429
	<b>Sub-total<sup>1</sup></b>	<b>1577</b>	<b>1110</b>	<b>68</b>	<b>48</b>	<b>21</b>	<b>9</b>	<b>21</b>	<b>17</b>	<b>0</b>	<b>0</b>	<b>1687</b>	<b>1184</b>
20-24	M	1557	1007	90	50	18	4	9	7	0	0	1674	1068
	F	1066	634	9	7	2	0	15	8	0	0	1092	649
	<b>Sub-total<sup>1</sup></b>	<b>2626</b>	<b>1644</b>	<b>99</b>	<b>57</b>	<b>20</b>	<b>4</b>	<b>24</b>	<b>15</b>	<b>0</b>	<b>0</b>	<b>2769</b>	<b>1720</b>
25-29	M	1425	828	66	41	32	7	15	6	0	0	1538	882
	F	944	486	5	1	13	2	14	4	0	0	976	493
	<b>Sub-total<sup>1</sup></b>	<b>2370</b>	<b>1315</b>	<b>71</b>	<b>42</b>	<b>45</b>	<b>9</b>	<b>29</b>	<b>10</b>	<b>0</b>	<b>0</b>	<b>2515</b>	<b>1376</b>
30-39	M	2348	1231	88	51	51	15	26	14	2	1	2515	1312
	F	1514	718	11	4	14	5	23	12	0	0	1562	739
	<b>Sub-total<sup>1</sup></b>	<b>3864</b>	<b>1950</b>	<b>99</b>	<b>55</b>	<b>65</b>	<b>20</b>	<b>49</b>	<b>26</b>	<b>2</b>	<b>1</b>	<b>4079</b>	<b>2052</b>
40-49	M	1676	836	97	50	65	13	17	10	1	0	1856	909
	F	1232	540	9	4	17	2	20	8	0	0	1278	554
	<b>Sub-total<sup>1</sup></b>	<b>2910</b>	<b>1377</b>	<b>106</b>	<b>54</b>	<b>82</b>	<b>15</b>	<b>37</b>	<b>18</b>	<b>1</b>	<b>0</b>	<b>3136</b>	<b>1464</b>
50-59	M	1606	765	109	60	64	14	14	7	3	0	1796	846
	F	912	356	9	5	14	4	14	7	0	1	949	373
	<b>Sub-total<sup>1</sup></b>	<b>2518</b>	<b>1121</b>	<b>118</b>	<b>65</b>	<b>78</b>	<b>18</b>	<b>28</b>	<b>14</b>	<b>3</b>	<b>1</b>	<b>2745</b>	<b>1219</b>
60-69	M	1149	580	70	37	43	16	27	9	0	0	1289	642
	F	650	286	4	2	13	3	13	3	0	0	680	294
	<b>Sub-total<sup>1</sup></b>	<b>1800</b>	<b>866</b>	<b>74</b>	<b>39</b>	<b>56</b>	<b>19</b>	<b>40</b>	<b>12</b>	<b>0</b>	<b>0</b>	<b>1970</b>	<b>936</b>
70+	M	888	536	12	6	41	17	28	13	0	0	969	572
	F	669	411	0	0	6	3	32	7	0	0	707	421
	<b>Sub-total<sup>1</sup></b>	<b>1559</b>	<b>948</b>	<b>12</b>	<b>6</b>	<b>47</b>	<b>20</b>	<b>60</b>	<b>20</b>	<b>0</b>	<b>0</b>	<b>1678</b>	<b>994</b>
Unknown	M	44	28	4	4	8	1	11	9	0	1	67	43
	F	18	14	0	0	4	2	7	7	0	0	29	23
	<b>Sub-total<sup>1</sup></b>	<b>1291</b>	<b>923</b>	<b>70</b>	<b>57</b>	<b>89</b>	<b>37</b>	<b>61</b>	<b>48</b>	<b>3</b>	<b>2</b>	<b>1514</b>	<b>1067</b>
ALL AGES	M	11632	6506	597	341	396	122	193	111	6	5	12824	7085
	F	7646	3864	56	31	93	25	173	80	0	1	7968	4001
	<b>TOTAL<sup>1</sup></b>	<b>20520</b>	<b>11259</b>	<b>719</b>	<b>425</b>	<b>566</b>	<b>181</b>	<b>410</b>	<b>223</b>	<b>9</b>	<b>7</b>	<b>22224</b>	<b>12095</b>

<sup>1</sup> Unknown sex included.

Table 38: Drivers &amp; Motorcycle Riders Involved in &amp; Responsible for Crashes by Licence Type &amp; Severity

Licence Type	Fatal Crashes		Serious Injury Crashes		Minor Injury Crashes		Property Damage Crashes		ALL CRASHES	
	Involved	Responsible	Involved	Responsible	Involved	Responsible	Involved	Responsible	Involved	Responsible
Learner's Permit	4	4	34	26	85	51	176	111	299	192
Probationary Licence	2	2	8	5	28	22	99	69	137	98
Full Licence	64	40	589	347	4048	1955	11705	5888	16406	8230
Unlicensed	5	5	46	39	91	68	224	186	366	298
Conditional Licence	0	0	0	0	0	0	0	0	0	0
Provisional 1 Licence	2	2	29	20	253	198	885	650	1169	870
Provisional 2 Licence	9	7	46	31	310	212	1044	669	1409	919
Disqualified Licence	0	0	5	5	14	14	38	35	57	54
Unknown	2	0	21	16	219	163	1154	844	1396	1023
<b>TOTAL</b>	<b>88</b>	<b>60</b>	<b>778</b>	<b>489</b>	<b>5048</b>	<b>2683</b>	<b>15325</b>	<b>8452</b>	<b>21239</b>	<b>11684</b>

Table 39a: Drivers &amp; Motorcycle Riders Responsible for Crashes by Licence Type and Age: Fatal Crashes

Age Group	Learner's Permit	Probationary Licence	Full Licence	Unlicensed	Conditional Licence	P1 Licence	P2 Licence	Disqualified	Unknown	TOTAL
0-15	0	0	0	0	0	0	0	0	0	0
16-19	3	0	0	1	0	2	1	0	0	7
20-24	1	0	1	0	0	0	4	0	0	6
25-29	0	1	6	0	0	0	2	0	0	9
30-39	0	0	8	1	0	0	0	0	0	9
40-49	0	1	7	2	0	0	0	0	0	10
50-59	0	0	7	1	0	0	0	0	0	8
60-69	0	0	5	0	0	0	0	0	0	5
70+	0	0	6	0	0	0	0	0	0	6
Unknown	0	0	0	0	0	0	0	0	0	0
<b>TOTAL</b>	<b>4</b>	<b>2</b>	<b>40</b>	<b>5</b>	<b>0</b>	<b>2</b>	<b>7</b>	<b>0</b>	<b>0</b>	<b>60</b>

Table 39b: Drivers & Motorcycle Riders Responsible for Crashes by Licence Type and Age:  
Serious Injury Crashes

Age Group	Learner's Permit	Probationary Licence	Full Licence	Unlicensed	Conditional Licence	P1 Licence	P2 Licence	Disqualified	Unknown	TOTAL
0-15	0	0	0	1	0	0	0	0	0	1
16-19	10	0	3	3	0	18	13	1	1	49
20-24	6	0	33	4	0	2	9	0	0	54
25-29	4	0	43	12	0	0	6	1	2	68
30-39	4	1	69	12	0	0	3	1	1	91
40-49	1	2	52	5	0	0	0	2	0	62
50-59	1	1	59	1	0	0	0	0	0	62
60-69	0	1	41	1	0	0	0	0	0	43
70+	0	0	47	0	0	0	0	0	2	49
Unknown	0	0	0	0	0	0	0	0	10	10
<b>TOTAL</b>	<b>26</b>	<b>5</b>	<b>347</b>	<b>39</b>	<b>0</b>	<b>20</b>	<b>31</b>	<b>5</b>	<b>16</b>	<b>489</b>

Table 39c: Drivers & Motorcycle Riders Responsible for Crashes by Licence Type and Age:  
Minor Injury Crashes

Age Group	Learner's Permit	Probationary Licence	Full Licence	Unlicensed	Conditional Licence	P1 Licence	P2 Licence	Disqualified	Unknown	TOTAL
0-15	0	0	0	2	0	0	0	0	0	2
16-19	24	1	8	3	0	134	91	1	2	264
20-24	13	4	232	19	0	30	84	1	2	385
25-29	8	4	245	10	0	12	18	3	4	304
30-39	4	7	398	18	0	17	13	6	2	465
40-49	2	2	306	8	0	5	3	1	0	327
50-59	0	3	268	3	0	0	3	2	0	279
60-69	0	1	212	4	0	0	0	0	0	217
70+	0	0	277	1	0	0	0	0	0	278
Unknown	0	0	9	0	0	0	0	0	153	162
<b>TOTAL</b>	<b>51</b>	<b>22</b>	<b>1955</b>	<b>68</b>	<b>0</b>	<b>198</b>	<b>212</b>	<b>14</b>	<b>163</b>	<b>2683</b>

Table 39d: Drivers & Motorcycle Riders Responsible for Crashes by Licence Type and Age:  
Property Damage Crashes

Age Group	Learner's Permit	Probationary Licence	Full Licence	Unlicensed	Conditional Licence	P1 Licence	P2 Licence	Disqualified	Unknown	TOTAL
0-15	0	0	0	4	0	0	0	0	0	4
16-19	51	3	29	6	0	456	283	2	8	838
20-24	26	7	796	26	0	113	256	5	27	1256
25-29	17	8	795	34	0	38	56	8	20	976
30-39	13	26	1243	57	0	27	49	12	13	1440
40-49	2	12	951	33	0	13	11	6	4	1032
50-59	1	9	803	14	0	0	6	2	2	837
60-69	0	3	627	3	0	0	2	0	5	640
70+	0	1	608	8	0	0	0	0	4	621
Unknown	1	0	36	1	0	3	6	0	761	808
<b>TOTAL</b>	<b>111</b>	<b>69</b>	<b>5888</b>	<b>186</b>	<b>0</b>	<b>650</b>	<b>669</b>	<b>35</b>	<b>844</b>	<b>8452</b>

Table 39e: Drivers & Motorcycle Riders Responsible for Crashes by Licence Type and Age:  
All Crashes

Age Group	Learner's Permit	Probationary Licence	Full Licence	Unlicensed	Conditional Licence	P1 Licence	P2 Licence	Disqualified	Unknown	TOTAL
0-15	0	0	0	7	0	0	0	0	0	7
16-19	88	4	40	13	0	610	388	4	11	1158
20-24	46	11	1062	49	0	145	353	6	29	1701
25-29	29	13	1089	56	0	50	82	12	26	1357
30-39	21	34	1718	88	0	44	65	19	16	2005
40-49	5	17	1316	48	0	18	14	9	4	1431
50-59	2	13	1137	19	0	0	9	4	2	1186
60-69	0	5	885	8	0	0	2	0	5	905
70+	0	1	938	9	0	0	0	0	6	954
Unknown	1	0	45	1	0	3	6	0	924	980
<b>TOTAL</b>	<b>192</b>	<b>98</b>	<b>8230</b>	<b>298</b>	<b>0</b>	<b>870</b>	<b>919</b>	<b>54</b>	<b>1023</b>	<b>11684</b>

# Reference Information for South Australia

---

- Population
- Licence
- Vehicle Information

Table 40: Estimated Population<sup>1</sup> by Age and Sex

Age Group	Sex		ALL PERSONS
	Male	Female	
0-15	170700	162657	333357
16-19	42252	39774	82026
20-24	58223	53834	112057
25-29	61947	59564	121511
30-39	122047	123509	245556
40-49	108565	110900	219465
50-59	113758	117022	230780
60-69	104891	112498	217389
70+	117589	141470	259059
<b>TOTAL</b>	<b>899972</b>	<b>921228</b>	<b>1821200</b>

Table 41: Licence and Permit Holders<sup>2</sup> by Age and Sex

Age Group	Sex			ALL PERSONS
	Male	Female	Unknown	
16-19	33,756	32,745	119	66620
20-24	49,683	46,759	125	96567
25-29	57,264	52,736	117	110117
30-39	115,418	113,528	156	229102
40-49	105,263	103,356	98	208717
50-59	109,711	108,017	54	217782
60-69	101,978	100,462	38	202478
70+	102,663	95,075	18	197,756
<b>TOTAL</b>	<b>675736</b>	<b>652678</b>	<b>725</b>	<b>1329139</b>

<sup>1</sup> Population as of June 2022. Source: Australian Bureau of Statistics, *Australian Demographic Statistics*, cat.no. 3101.0.

<sup>2</sup> At December 2022. Source: TRUMPS database, Registration & Licensing Section, Department for Infrastructure and Transport.



Table 42: Motor Vehicle on Register<sup>1</sup> by Vehicle Type

Type of Vehicle	ALL VEHICLES
Cars & Station Wagons	1,138,121
Utilities	210,679
Panel Vans	40,967
Rigid & Other Trucks	43,318
Articulated Trucks	9,424
Other Commercials <sup>2</sup>	17,492
Buses	4,303
Motorcycles	49,882
Other <sup>3</sup>	47,762
<b>TOTAL</b>	<b>1,561,948</b>

Table 43: Vehicle Kilometres Travelled<sup>4</sup> (VKT) by Jurisdiction

Type of Vehicle	TOTAL VKT ('000 000)
New South Wales	68,468
Victoria	61,176
Queensland	54,504
<b>South Australia</b>	<b>16,164</b>
Western Australia	28,484
Tasmania	5,225
Northern Territory	2,164
Australian Capital Territory	3,826
<b>TOTAL</b>	<b>240,011</b>

<sup>1</sup> At June 2022. Excludes trailers, caravans, plant and equipment. Source: TRUMPS database, Registration & Licensing Section, Department for Infrastructure and Transport.

<sup>2</sup> Includes animal transporter vehicle, drilling rig vehicle, earth moving vehicle, garbage truck, industrial vehicle, mobile crane vehicle, tanker vehicle.

<sup>3</sup> Includes ambulance, armoured vehicle, forklift, land implement vehicle, golf buggy, tractors.

<sup>4</sup> Travel for the year 2022. Source: BITRE, *Road Trauma Australia 2022 Statistical Summary*.