

Asian Paddle Crab *Charybdis japonica*

Stay alert for invasive Asian Paddle Crabs in South Australian waters.

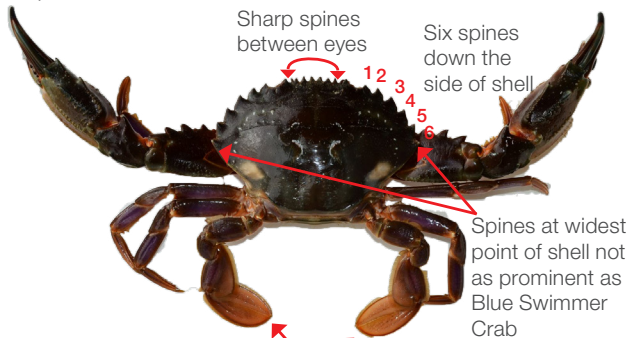
What is the Asian Paddle Crab?

Asian Paddle Crabs are aggressive non-native crabs that could out-compete native crabs like the Blue Swimmer Crab. They can carry diseases, such as White Spot Syndrome Virus, that can impact prawns, crabs and lobsters.

The Paddle Crab is not currently established in Australia, but has significant potential to do so. It is important to immediately report any found.

What does the Asian Paddle Crab look like?

- Can grow up to 120 mm wide, which is smaller than the Blue Swimmer Crab
- Found in a number of colours - pale, olive green, brown, purple
- Sharp spines between its eyes
- Six spines down each side of the shell



Paddles located on rear legs - similar to Blue Swimmer Crab

How to report

Report any sightings or catches of this species to Primary Industries and Regions (PIRSA) immediately.

Fishwatch (24 hours): 1800 065 522

Email: PIRSA.InvasiveSpecies@sa.gov.au

Or report via the form on the **South Australian Recreational Fishing Guide** app.

What to look for



Pale brown



Grey/purple



Brown

Comparing the Asian Paddle Crab with native crabs

Due to its colouring and size, it is possible to confuse the Asian Paddle Crab with native crabs. The images below show common native crabs and their colouring.



Asian Paddle Crab

Blue Swimmer Crab *Portunus armatus*

Features

- Grow up to 210 mm – carapace width – larger than Asian Paddle Crabs
- Female colouring can be sandy to brown
- Male colouring is blue/purple
- Claws more elongated than Asian Paddle Crabs.



Female



Male

Sand Crab *Ovalipes australiensis*

Features

- Grow up to 110 mm – carapace width
- Two distinctive red/black spots either side of carapace (rear)
- Pale brown (sandy) colour
- Paddles on rear legs.



Rough Rock Crab *Nectocarcinus integrifrons*

Features

- Grow up to 80 mm – carapace width
- Carapace split into two colours (brown-purple at the front, grey-sandy at the rear)
- Black tips on claws
- No paddles on rear legs, legs pointed at tips



Fishwatch (24 hours): 1800 065 522

Web: pir.sa.gov.au/aquatic_pests

