

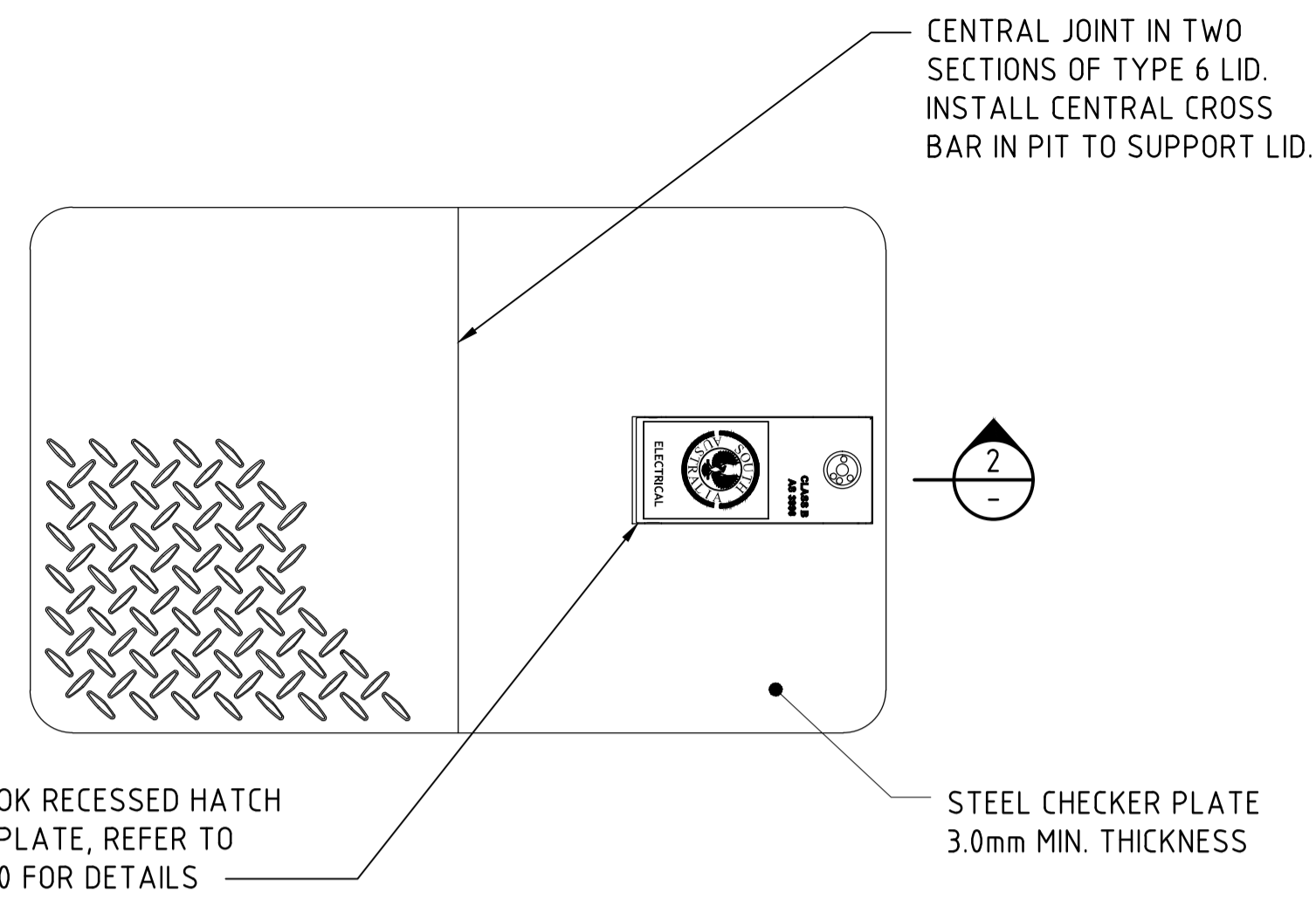
PIT TYPE	PIT DIMENSIONS (mm)		
	L	W	D
TYPE 2	660	290	575
TYPE 3	565	335	530
TYPE 4	715	410	800
TYPE 5	715	465	635
TYPE 6	1380	565	670
TYPE 7	1020	565	1145
TYPE 8	1380	565	890
TYPE 9	2035	565	890

NOTE: THESE DIMENSIONS ARE NOMINAL AND SHOULD BE CHECKED WITH ACTUAL PIT ON SITE

**PLASTIC PITS (ROTATIONAL MOULDED) - DIMENSIONS**

SCALE 1:10

NOTE: PLASTIC PITS ARE COMMERCIALY AVAILABLE PRODUCT PITS TO BE INSTALLED AS PER THIS DRAWING AND MANUFACTURER'S RECOMMENDATIONS.

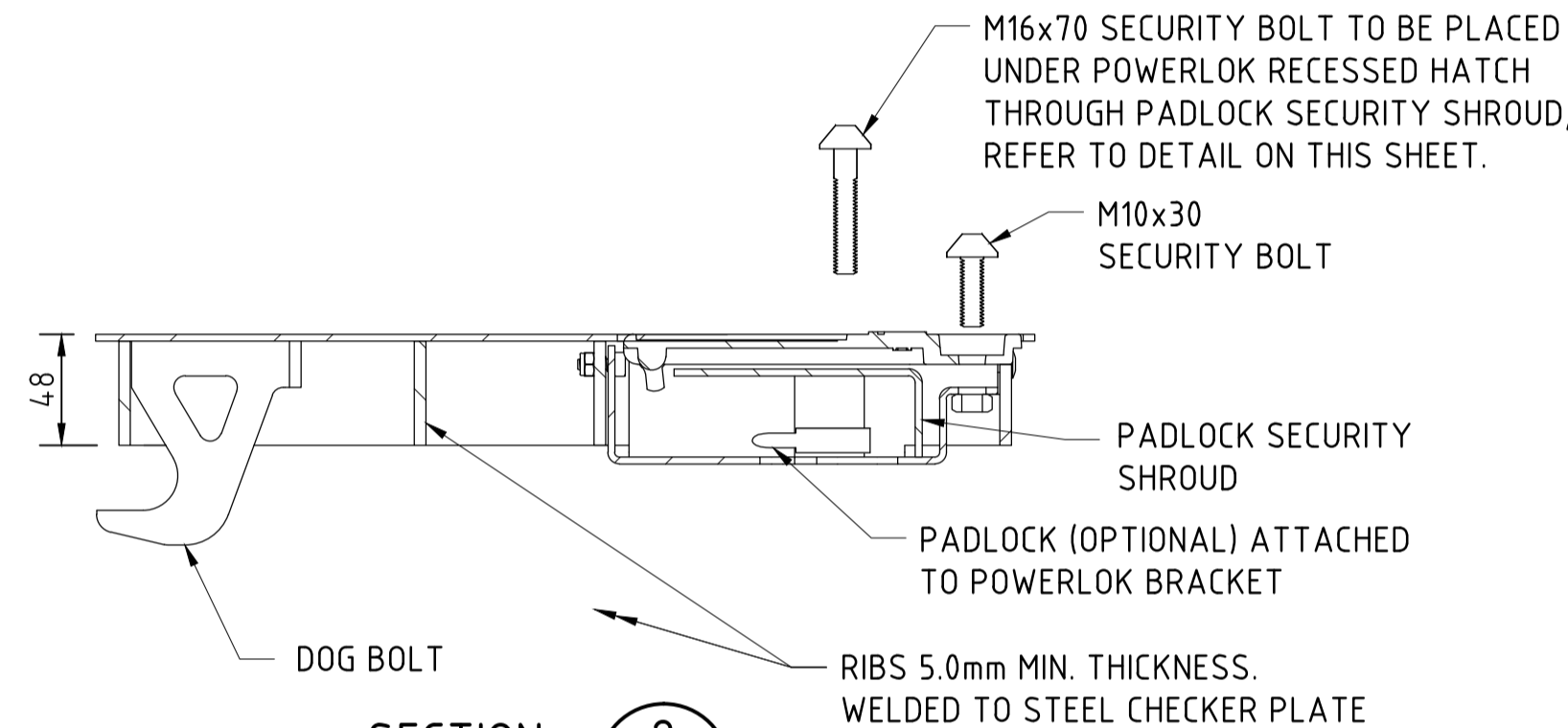


**LOCKABLE STEEL LID CLASS 'A' OR 'B'-AS3996**

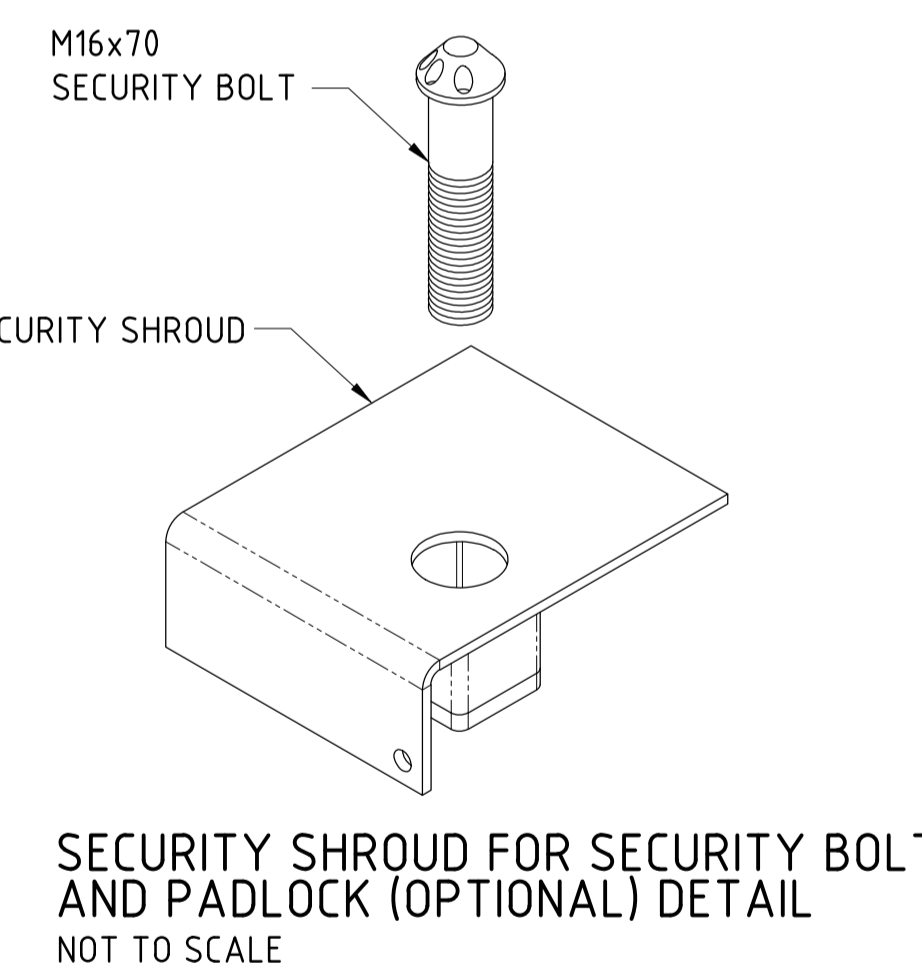
SCALE 1:5

AS DRAWN FOR TYPES 3 TO 6, TYPE 2 SIMILAR

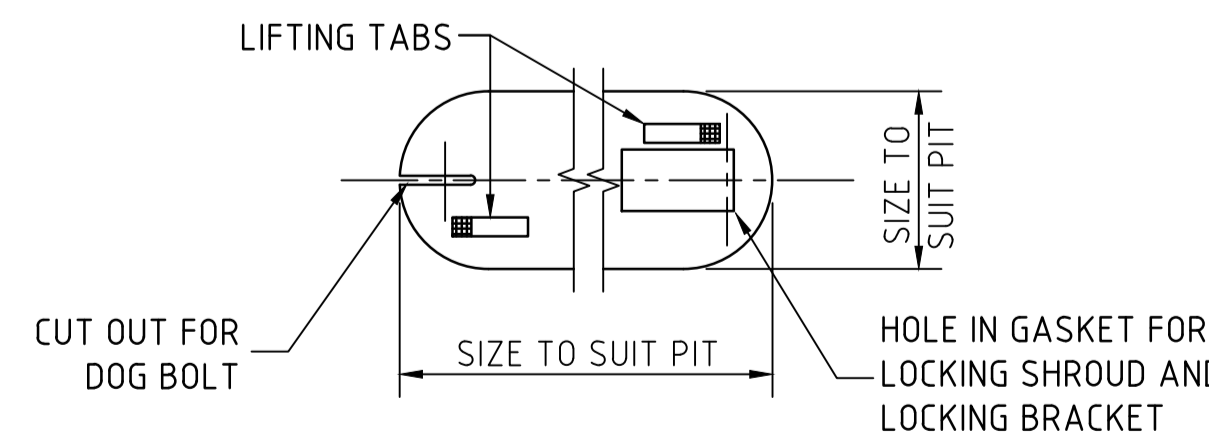
NOTE: LID SIZE TO BE MANUFACTURED TO SUIT APPROPRIATE PIT



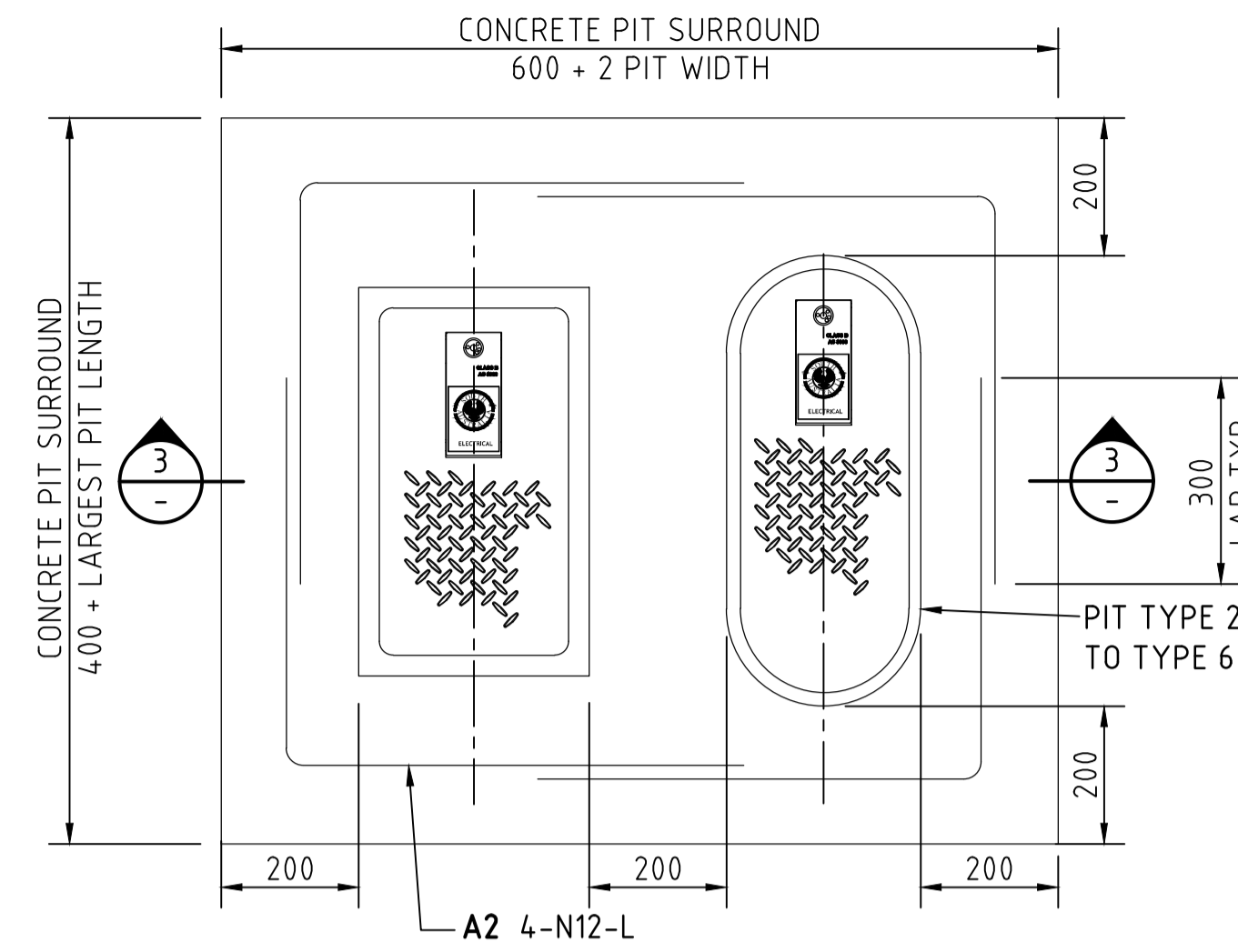
SECTION 2 NOT TO SCALE



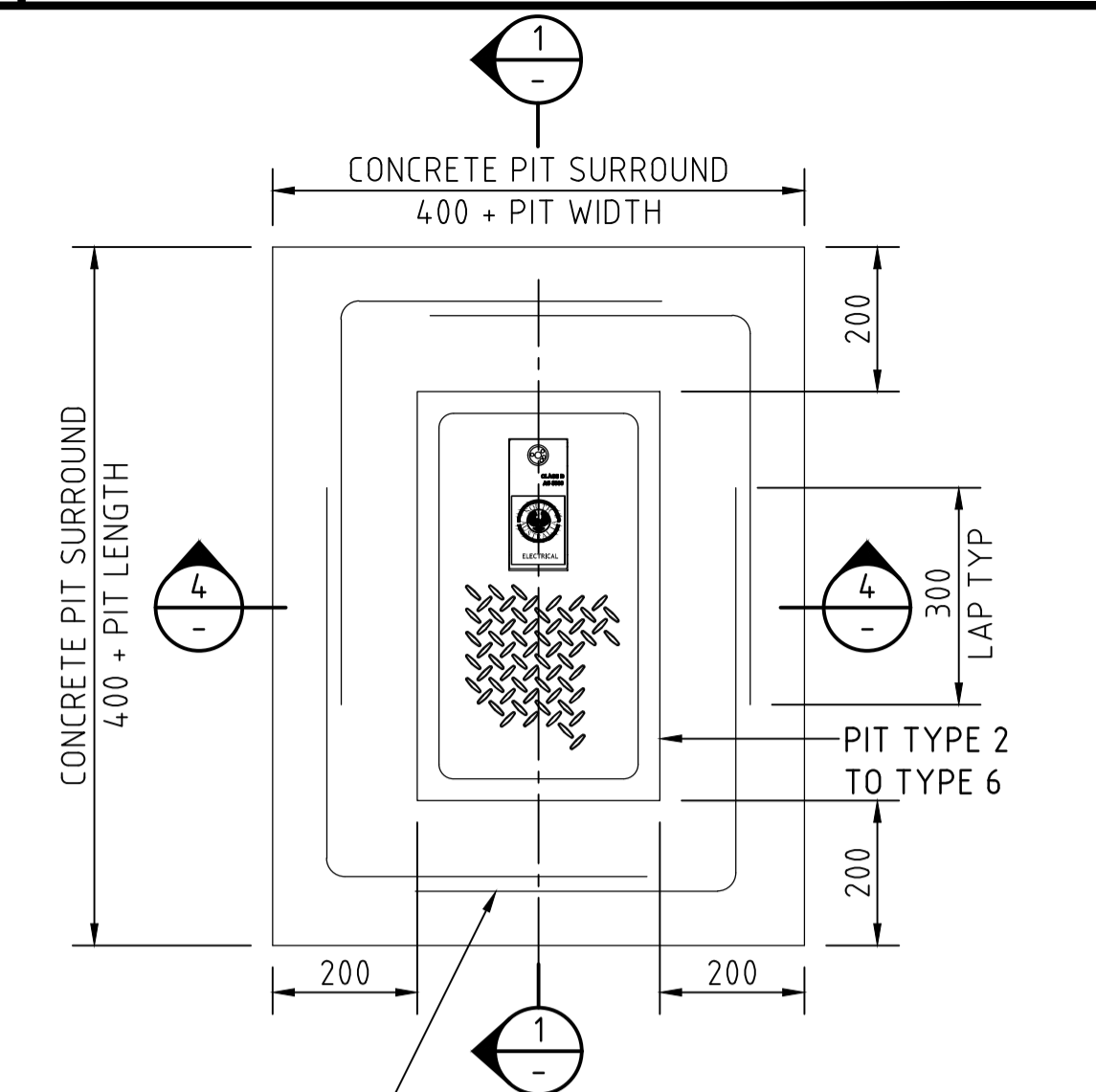
SECURITY SHROUD FOR SECURITY BOLT AND PADLOCK (OPTIONAL) DETAIL NOT TO SCALE



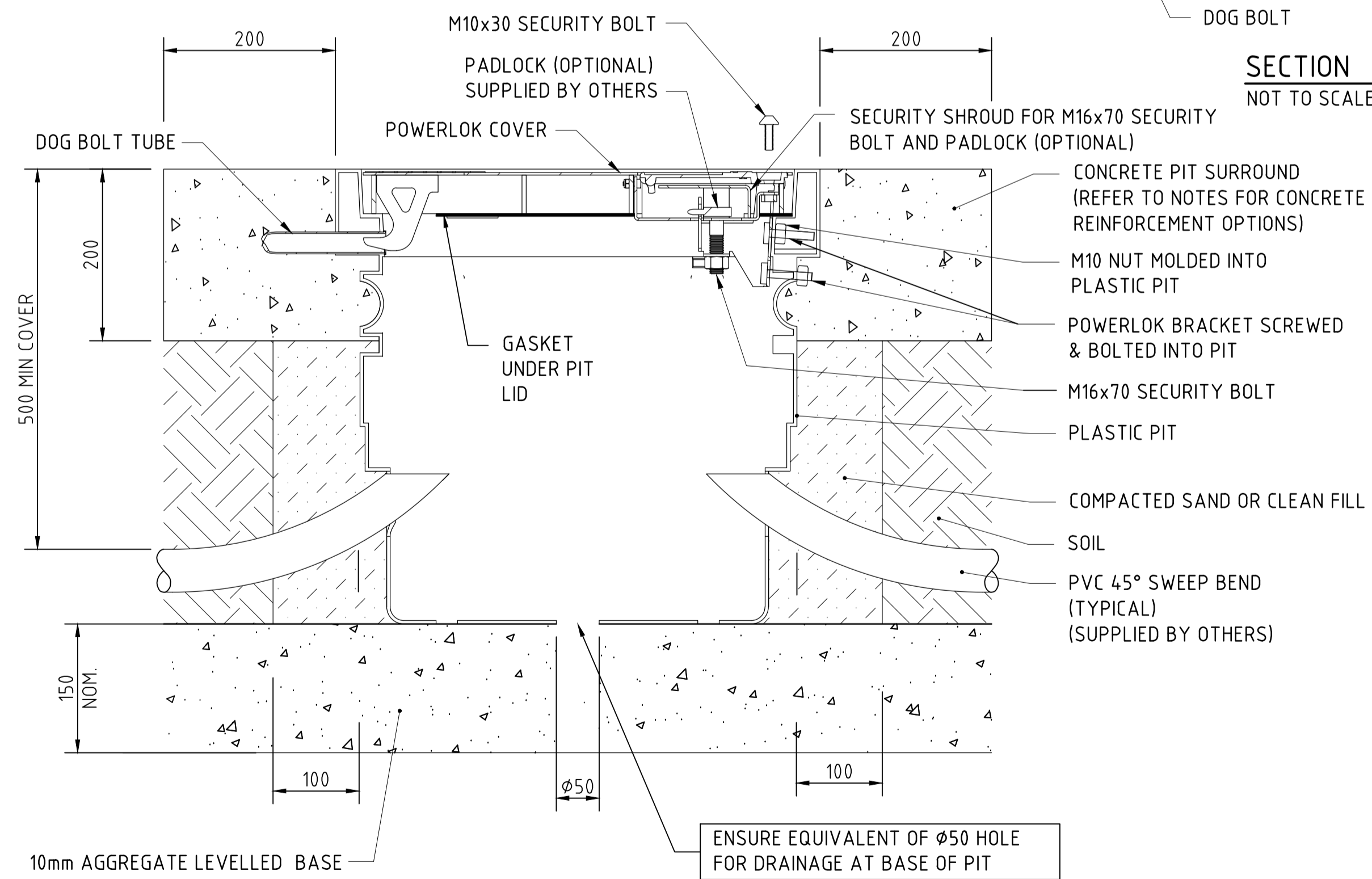
GASKET TO SUIT LOCKABLE STEEL LIDS  
NOTE: GASKET TO BE MADE FROM 3mm THICK CORFLUTE PLASTIC.



REINFORCED CONCRETE PIT SURROUNDS - OPTIONS 1 AND 2  
NOT TO SCALE



SECTION 3 SECTION 4 NOT TO SCALE



SECTION 1 SCALE 1:5

- NOTES**
- GENERAL**
- NOTES TO BE READ IN CONJUNCTION WITH DPTI MASTER SPECIFICATION.
  - REINFORCED CONCRETE SURROUND IS REQUIRED WITH ALL PIT INSTALLATIONS IRRESPECTIVE OF EXISTING GROUND SURFACE CONDITION.
  - BACKFILL AROUND PIT WITH SAND (REFER DPTI MASTER SPECIFICATION) & COMPACT TO 90% MODIFIED COMPACTION.
  - CONDUIT ENTRY SHALL BE SEALED INSIDE AND OUT WITH APPROVED SEALANT.
  - LIDS TO BE CLASS 'A' AND 'B' IN ACCORDANCE WITH AS 3996 CLAUSE 3.1.
  - FOR DETAILS OF LOCKABLE LIDS REFER TO DRAWINGS S-4055 SHEET 70.
  - ALL STEEL LIDS & COMPONENTS SHALL BE HOT DIP GALVANISED AFTER FABRICATION IN ACCORDANCE WITH AS/NZS 4680 & AS 1214 (BOLTS AND NUTS)
  - ALL NUTS TO BE TAPPED OVERSIZE TO SUIT GALVANISING.
  - LID CLASS TO BE PERMANENTLY LABELLED ON THE UNDERSIDE OF THE LID.
  - SIMILAR LID & LOCKING MECHANISM IS SUBJECT TO DPTI APPROVAL
- REINFORCED CONCRETE SURROUND OPTIONS**
- OPTION 1 - REINFORCEMENT AS PER DETAIL ON THIS SHEET.**
- COVER TO REINFORCEMENT: 100mm AGAINST SOIL & PIT.
  - MINIMUM LAP 25 DIA FOR 500N BARS, UNO.
  - REINFORCING BAR SHALL BE GRADE D500N IN ACCORDANCE WITH AS/NZS4671. STANDARD HOOKS AND BENDS SHALL BE IN ACCORDANCE WITH AS 3600.
  - CONCRETE SHALL BE GRADE N32 MINIMUM, WITH MAXIMUM SLUMP OF 80mm.
- OPTION 2 - FIBRE REINFORCEMENT**
- CONCRETE SHALL BE IMPREGNATED WITH 'FORTA FERRO' OR ALTERNATIVE APPROVED FIBRE PRODUCED FROM 100% VIRGIN COPOLYMER/POLYPROPYLENE. DOSAGE RATE FOR 'FORTA FERRO' IS 5KG/M<sup>3</sup> OF CONCRETE MIX. FIBRE TOUGHNESS RE 3% TO BE AT LEAST 40%.
  - CONCRETE SHALL BE GRADE N32 MINIMUM, WITH MAXIMUM SLUMP OF 80mm. THE CONCRETE MIX TO BE DESIGNED FOR SPECIFIC FIBRE USED.
- INSTALLATION OF LID**
- BEFORE CASTING REINFORCED CONCRETE PIT SURROUND INSTALL DOG BOLT TUBE IN PREDRILLED HOLES & ATTACH POWERLOK BRACKET ONTO PIT USING 4 M10 BOLTS (2 NUTS MOLDED INTO PIT).
  - CAST REINFORCED CONCRETE PIT SURROUND.
  - INSTALL M16X70 SECURITY BOLT & PADLOCK.
  - CLOSE POWERLOK RECESSED HATCH AND SECURE WITH M10X30 SECURITY BOLT.
  - SECURITY BOLTS TO BE SUPPLIED BY DPTI. CONTRACTOR TO SUPPLY EQUIVALENT D-BOLTS
  - ENSURE ANTI-SEIZE COMPOUND IS USED ON BOLT THREADS

FILE: H:\04 - STANDARDS\4-055 - LIGHTING\4-055 Sheet 0069-AMD 1.dwg

No.	AMENDMENT DESCRIPTION	BY	CHECK	ACCEPTANCE	DATE
1	SHEET NUMBER NOTE AMENDED NOTES UPDATED PITS ADDED	MD	ED	S. PASCALE	5/4/16

THIS SHEET SUPERSEDES SHEETS 59 TO 62

Department of Planning, Transport and Infrastructure

STANDARD DRAWING  
ELECTRICAL ASSETS  
ELECTRICAL SERVICES AND COMMUNICATION

**PLASTIC PITS AND LOCKABLE STEEL LIDS CLASS A AND B & SURROUNDS**

DESIGNED: AP	DRAFTED: MD	ACCEPTED FOR USE: PHIL MOLLOY	ACCEPTANCE FORM KNET No.: 9973285	DRAWING No.: S - 4055	SHEET No.: 69	AMEND No.: 1
CHECKED: AP	REVIEWED: PM	MGR, ENGINEERING SERVICES DATE: 01/12/2015		LATITUDE: N/A	LONGITUDE: N/A	