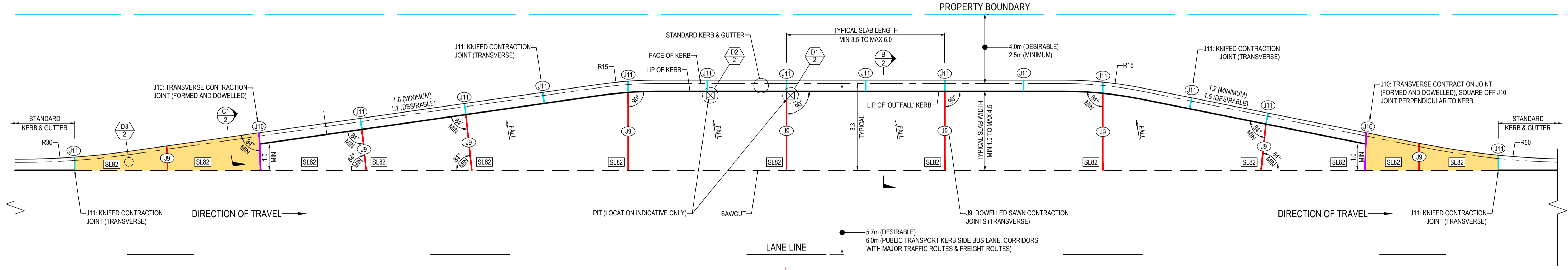


INDENTED BUS BAY
POSITIVE CROSSFALL
RIGID PAVEMENT JOINT LAYOUT DESIGN



INDENTED BUS BAY
NEGATIVE CROSSFALL
RIGID PAVEMENT JOINT LAYOUT DESIGN

NOTES:

1. CONCRETE PAVEMENT TYPE OPTIONS INCLUDE: JOINTED REINFORCED CONCRETE PAVEMENT (JRCP) OR STEEL FIBRE CONCRETE PAVEMENT (SFPC).
2. FOR KERB & GUTTER & DISH DRAIN DETAILS REFER TO STANDARD DRAWING S-4070 SHEET 7.
3. FOR TYPICAL SECTIONS AND DETAILS REFER TO STANDARD DRAWING 95271 SHEET 2.
4. FOR TYPICAL JOINTING DETAILS REFER TO STANDARD DRAWING 95271 SHEET 3.
5. FOR TYPICAL NOTES AND TABLES REFER TO STANDARD DRAWING 95271 SHEET 4.

LEGEND

- J11 JOINT TYPE
- SL82 MESH SIZE
- EXTENT PAVEMENT TYPE RP1 (JRCP OR SFPC)
- PAVEMENT TYPE RP1 WITH INTEGRAL KERB.

| | | | | | | | | | | | | |
|--------------------------------------|--|--------------------------------------------------------------------------------------------------|--|--------------------------------------|--------------|--------------------------------------------------------------------------------------------------------|--------------|------------------------------------|---------------------------|----------------|------------|-----------------|
| INDEX SHEET REFERENCE: N/A SHEET N/A | | Government of South Australia Department of Planning, Transport and Infrastructure | | PROJECT No.: | FILE No.: | STANDARD DRAWING RIGID PAVEMENTS INDENTED BUS BAYS TYPICAL LAYOUTS SHEET 1 OF 4 | | | | | | |
| | | | | DESIGN No.: | SURVEY No.: | | | | | | | |
| | | | | PROJECT START ROAD RUNNING DISTANCE: | | | | | | | | |
| | | | | PROJECT END ROAD RUNNING DISTANCE: | | | | | | | | |
| | | | | SCALES: | NOT TO SCALE | DESIGNED: PAS | DRAFTED: GE | ACCEPTED FOR USE: COSTA TSEMTSIDIS | ACCEPTANCE FORM KNET No.: | DRAWING No.: | SHEET No.: | AMEND No.: |
| | | | | | | CHECKED: PAS | CHECKED: PAS | DATE: 9/10/2019 | 14058151 | 95271 | 1 | 1 |
| | | | | | | | | IN ACCORDANCE WITH DP013 | | SHEET LATITUDE | | SHEET LONGITUDE |

CAD FILE NAME: 95271 SHEET 0001.DWG