

RIVERBANK ENTERTAINMENT PRECINCT

Adelaide Convention Centre Redevelopment

Introduction

The Adelaide Convention Centre is undergoing a \$397 million redevelopment and expansion.

The project includes construction of two new iconic buildings, with striking shapes inspired by the cliffs, rock formations and escarpments of the Flinders Ranges and South Australian landscape.

The first building (Stage 1) expands the existing facility westwards over the railway line to link with Montefiore Bridge. The second building (Stage 2) will replace the current plenary hall with a new multi-purpose facility.



Artist's Impression of Stage 1 expansion.

The project is being delivered by a multi-disciplinary consortium including Woods Bagot (architects), Lend Lease (construction), Aurecon (structural and rail engineering), Bestec (mechanical and electrical engineering) and Thinc Projects (project management).



Artist's Impression of Stage 1 and Stage 2 of redevelopment with existing facility.

Construction Works

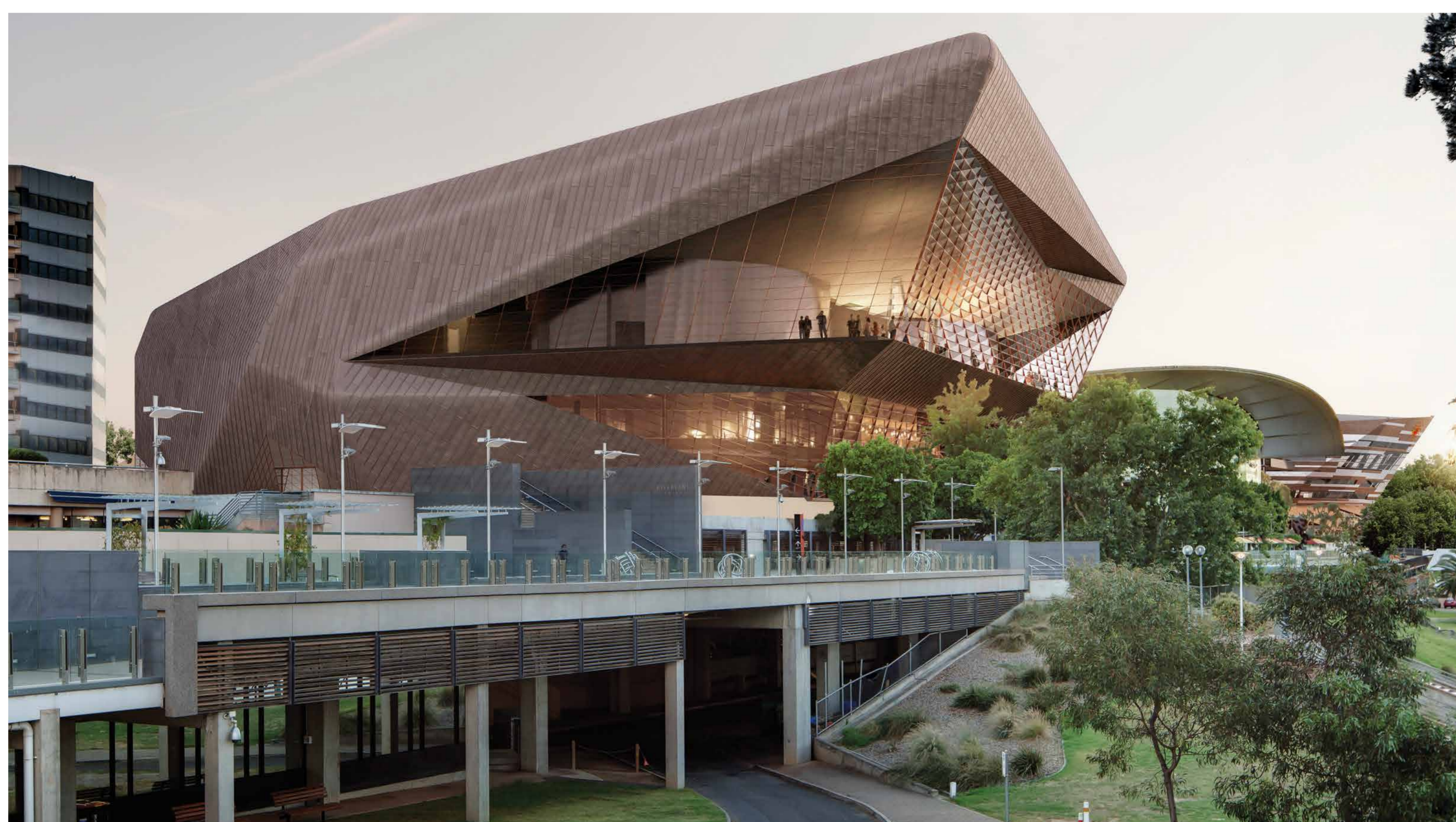
Construction of Stage 1 started in 2011 and will be completed in late 2014/early 2015.

Preliminary works for Stage 2 commenced in late 2013 within the car park and external plaza areas, and will continue through 2014. The main demolition and construction works will occur from late 2014 through to mid 2017.

The Adelaide Convention Centre is continuing to operate throughout the construction period.

As construction proceeds, temporary changes to traffic and pedestrian movements in and around the Riverbank Entertainment Precinct will be required.

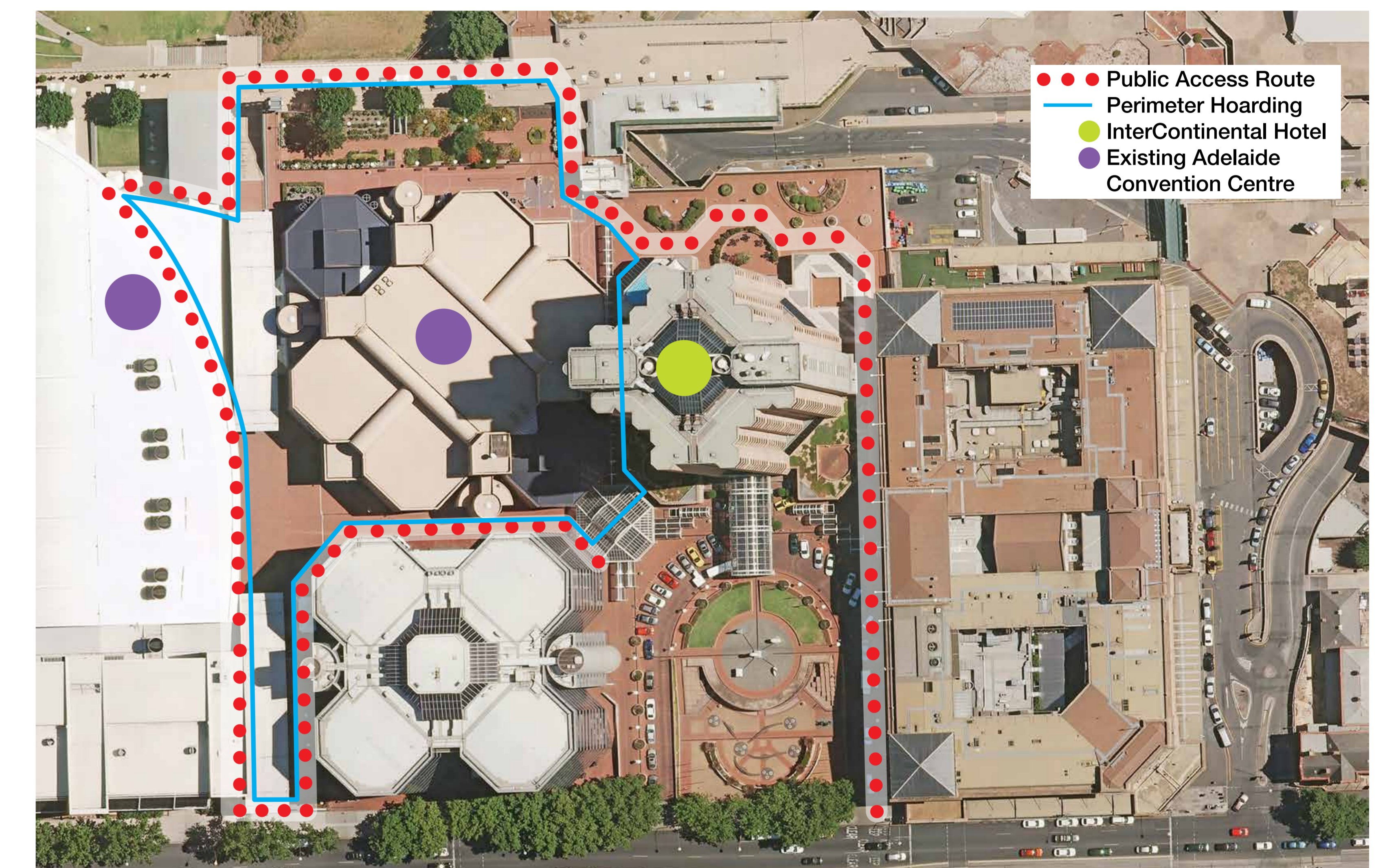
Pedestrians are advised to be aware of trucks entering and exiting the plaza area.



Artist's Impression of Stage 2 new Plenary Building overlooking River Torrens Precinct.

Pedestrian Detours

Directional signage will be in place for pedestrian detours during construction with the primary detour route for pedestrians shown in red on the map below. Some alterations to this detour will be required as construction progresses with signage in place to direct pedestrians.



Project Overview

The redevelopment of the Adelaide Convention Centre:

- will further enhance Adelaide's national and international brand – the 'post card' image for the City and South Australia
- will re-establish Adelaide as a premier national and international conference destination
- will provide Adelaide with two remarkable buildings, providing a dramatic face to the Riverbank Precinct
- complements other State Government investment to revitalise the Greater Riverbank Precinct including the redevelopment of the Adelaide Oval, footbridge over the River Torrens and construction of the new Royal Adelaide Hospital
- will create and enhance linkages and pedestrian connections within the surrounding entertainment and cultural precinct.

Further information

Phone: 1300 306 254

Email: DPTI.ConventionCentreProjectTeam@sa.gov.au

Web: www.thebigbuild.sa.gov.au (Riverbank)



Government of South Australia

Department of Planning,
Transport and Infrastructure