

# Darlington Upgrade Project

## Shepherds Hill, Ayliffes & South Road intersection partial closures, October 2019

As part of road resurfacing and utility service works for the Darlington Upgrade Project, partial closures of the Shepherds Hill Road, Ayliffes Road and South Road intersection will be in place on the below dates. The traffic arrangements for the works are outlined below. Please refer to the plans overleaf for further details.

### **STAGE 1**

#### **8pm Friday 11 October – 6am Monday 14 October**

- Access to Shepherds Hill Road from South Road will not be available. Motorists will be required to detour via Main South Road and Sturt Road.
- Access to South Road and Ayliffes Road from Shepherds Hill Road will not be available. Motorists will be required to detour via Sturt Road and Main South Road.
- Access to the lowered motorway and Southern Expressway will not be available from Ayliffes Road or the Main South Road on-ramp adjacent Flinders Drive. Motorists will need to use the on-ramp at Marion Road.

### **STAGE 2**

#### **8pm Thursday 10 October – 6am Friday 11 October**

- Access to South Road and Ayliffes Road from Shepherds Hill Road will not be available. Motorists will be required to detour via Sturt Road and Main South Road.
- Access to Shepherds Hill Road from South Road will not be available. Motorists will be required to detour via Main South Road and Sturt Road.
- Access to the lowered motorway and Southern Expressway will not be available from Ayliffes Road or the Main South Road on-ramp adjacent Flinders Drive. Motorists will need to use the on-ramp at Marion Road.

The Stage 2 arrangements may also need to be implemented from 8pm Monday 14 October – 6am Tuesday 15 October if works above are unable to be completed as scheduled.

Northbound traffic travelling via Main South Road, the lowered motorway and the Southern Expressway will not be impacted during these works.

The right turn from Sturt Road travelling westbound to Main South Road will be permanently reinstated from 8pm Friday 4 October.

Traffic signals at the Shepherds Hill Road, Ayliffes Road and South Road intersection will not be operational during the works – they will flash amber. Motorists will be directed by signage, barriers and traffic controllers.

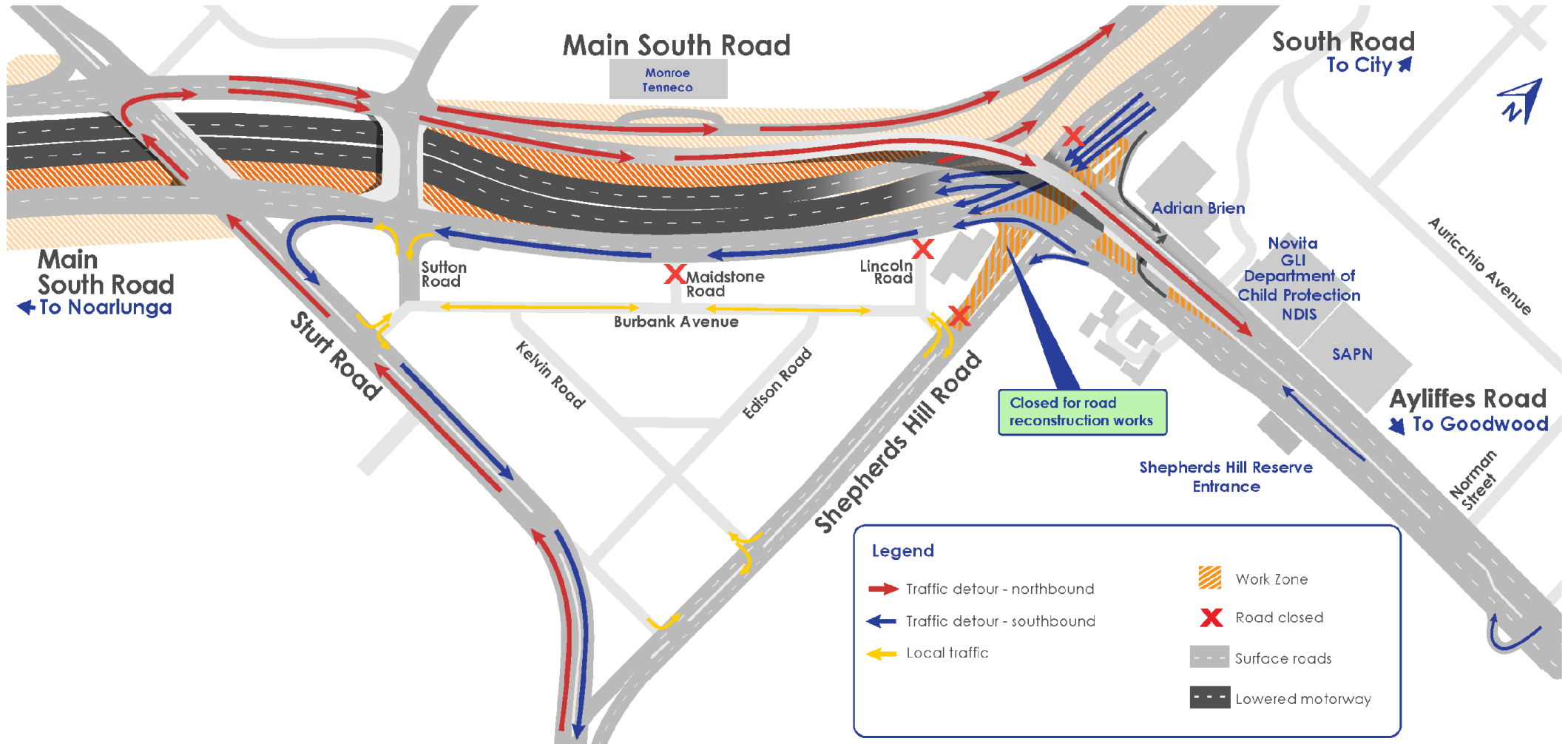
Pedestrian access along Ayliffes Road, Shepherds Hill Road and South Road will be retained.

A profiler, crane, excavator, asphalt truck and lighting towers will be used. There will be some noise disturbance while these works are completed, however the work will be managed to minimise disturbance to local residents as much as possible.

Please plan ahead, allow extra travel time and observe onsite signage and speed restrictions. The works are weather dependant and may need to be rescheduled in the case of excessive rain.

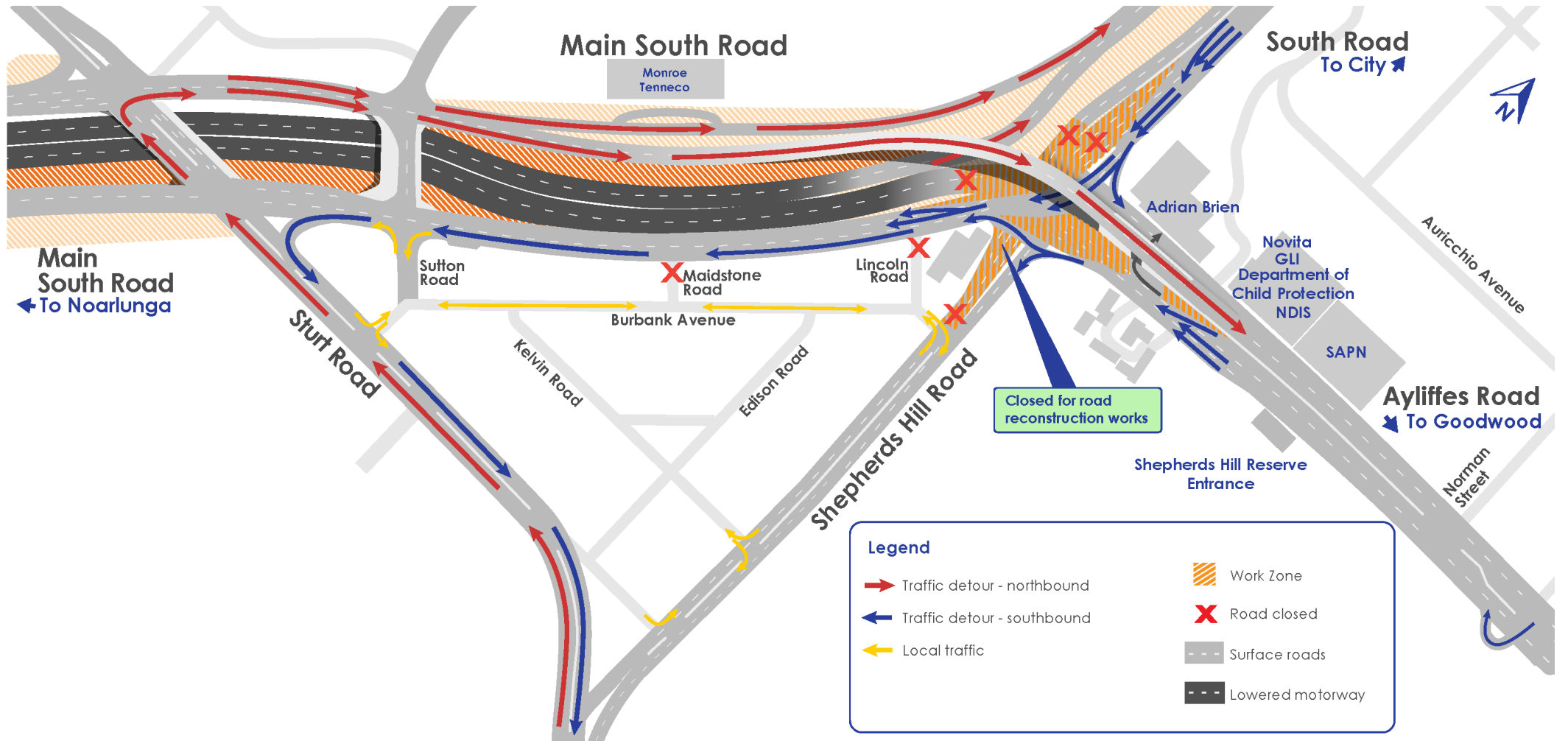
# STAGE 1: Ayliffes Road intersection works

October 2019



# STAGE 2: Ayliffes Road intersection works

October 2019





## Ayliffes Road partial closure

A partial closure of Ayliffes Road will be implemented from 6am Tuesday 8 October to complete barrier, kerbing and pavement construction works.

The closure will be in place for three weeks and will affect a 150m section of the eastbound carriageway of Ayliffes Road (from immediately east of the South Road intersection).

During this time, eastbound vehicles in the closed section of road will be detoured onto the westbound carriageway of Ayliffes Road.

The right turn from Shepherds Hill Road into Ayliffes Road will be reduced to one lane and motorists will be directed onto the westbound carriageway, as outlined above.

Entry to the businesses at 15-31 Ayliffes Road (Novita, Department for Child Protection, NDIS and GLI) will not be possible from Ayliffes Road during this time. Entry will be via The Crescent. Motorists will be able to exit the businesses and turn left onto Ayliffes Road.

Access to Adrian Brien will be maintained via Ayliffes Road and South Road.

## Further weekend works

Road resurfacing works at the Shepherds Hill Road, Ayliffes Road, Main South Road intersection will be staged in order to ensure that the intersection remains partially operational during the works.

Further works will be undertaken following the activities outlined in this notification.

We will provide you with detailed information on these works in the near future.

## For more information

**Call:** 1300 759 334

**Email:** [enquiries@gatewaysouth.com.au](mailto:enquiries@gatewaysouth.com.au)

**Visit:** [infrastructure.sa.gov.au/darlington](http://infrastructure.sa.gov.au/darlington)

### Drop in to the project site office:

We are now located at 15-31 Ayliffes Road, St Marys (next to Novita).

For real time delay information, please visit: [www.addinsight.com.au](http://www.addinsight.com.au) and download the app.