

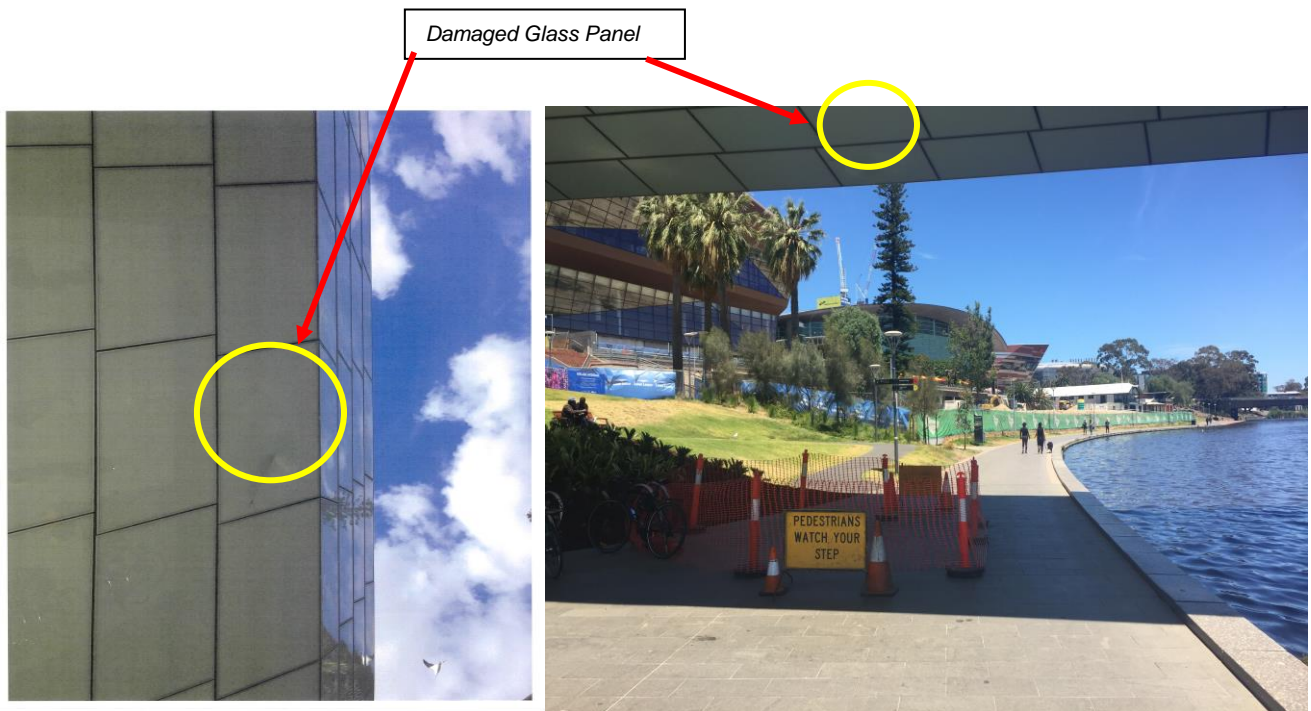
SAFETY ALERT

Incident Title:
Footbridge Damage

Date of Incident:
December 2016

Incident Description and Details:

A contractor was unloading mulch from a truck into garden beds adjacent the footbridge when the top of the truck's tray made contact with the bridge. This caused damage to one of the glass panels. No risk assessment was done for the task involved and there was no dedicated spotter.



Recommendations/Lessons

- No one was actively spotting and taking responsibility to communicate with the driver during the task.
- Working under the bridge was not raised as a hazard during the pre-start meeting or recorded in the contractor's Job Safety Analysis/Safe Work Method Statement (JSA/SWMS).
- The landscape material to be used under the bridge should have been tipped either side of the bridge and wheel barrowed into the designated area. This would have been the safest option.

A REMINDER TO ALL STAFF

- Always identify site specific hazards and risk assess before the task begins.
- Ensure a spotter is available to watch when plant and equipment is in use near structures.