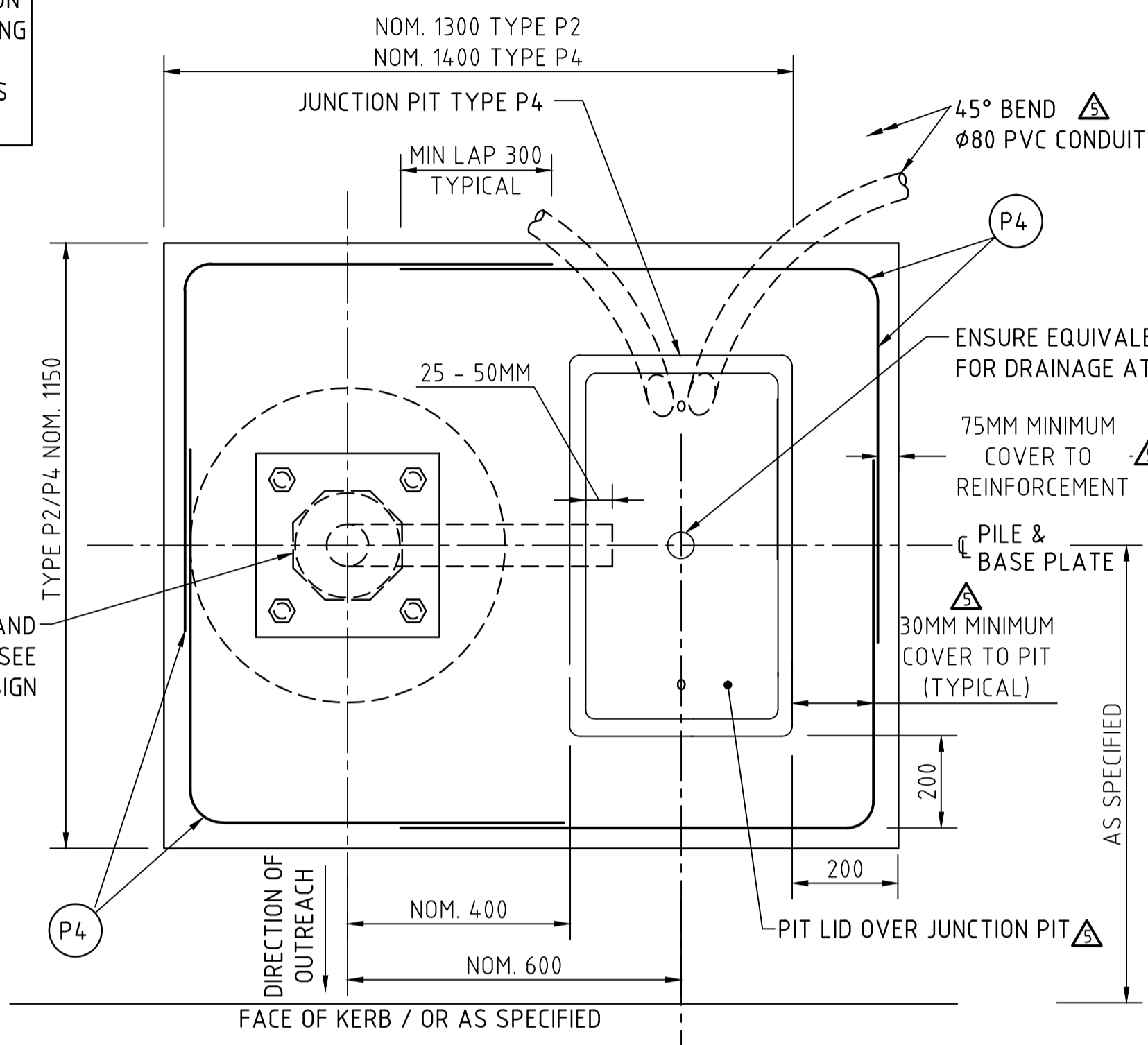


PILE AND ANCHORAGE DETAILS  
SCALE 1:10

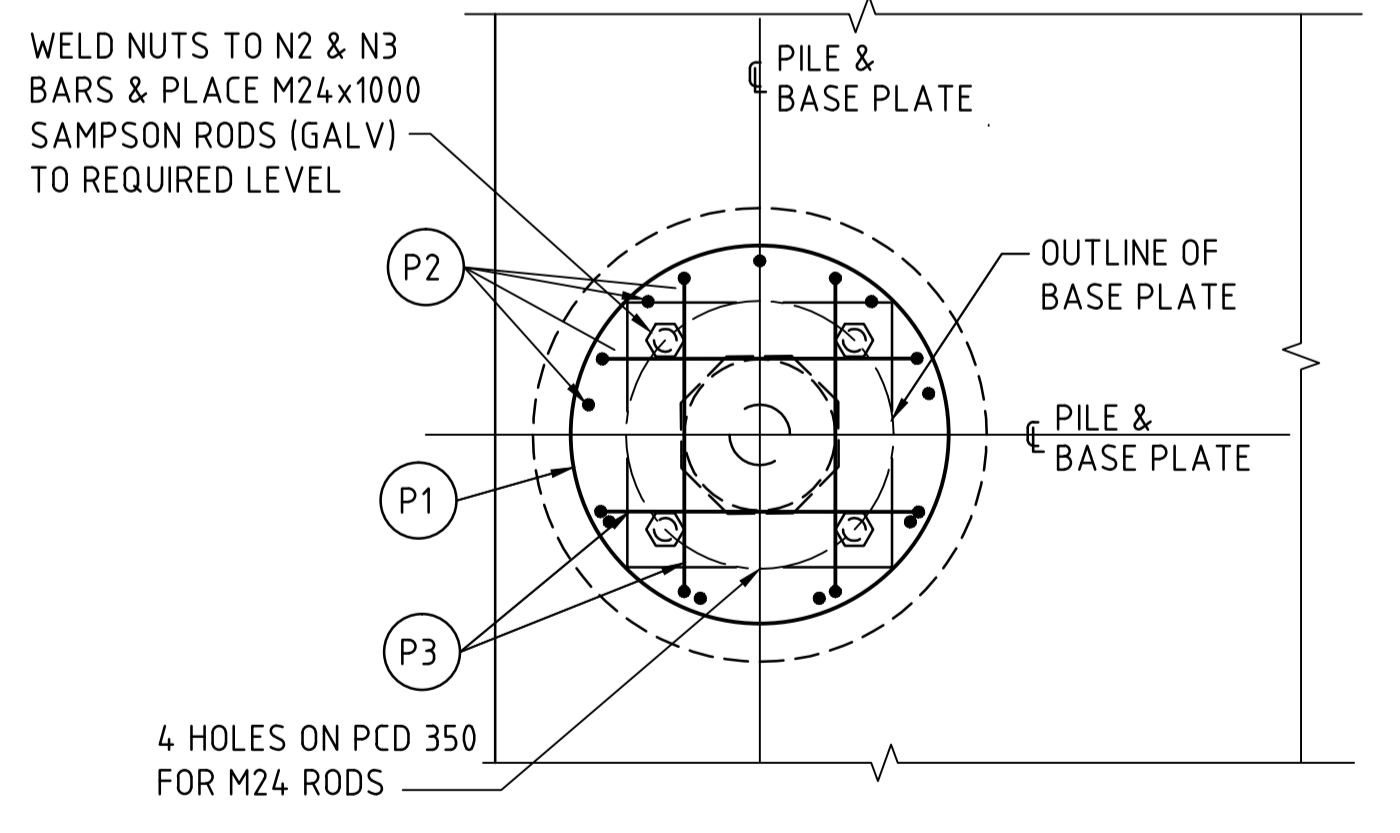
DESCRIPTION	No.	Date	Resp	Examined	Approved for Exec Director	Date
AMENDMENTS TO ANNOTATION & REINFORCEMENT, DWG SUPERSEDES SHT 63 ADDED.	1	14/6/17	HD	P. MOLLOY	P. MOLLOY	14/6/17
NOTE & DIMENSIONS ADDED	2	30/11/15	M/MD	P. MOLLOY	S. PASCALE	5/4/16
THIN NUT ADDED TO THREADED RODS & LENGTH IN P1 BAR REINFORCEMENT CHANGED	3	21/6/13	A.P.	P. MOLLOY	P. MOLLOY	21/6/13
REINFORCEMENT & NOTES AMENDED	4	30/04/08	A.P.	P. MOLLOY	P. D. WILSON	05/05/08
DRAWING REDRAWN IN DIFFERENT FORMAT REINFORCEMENT CHANGED DIMENSIONS ADDED & CHANGED P4 PIT REPLACING P2 PIT	5	22/11/07	A.P.	R. BURT	P. D. WILSON	23/11/07
P1 REPLACED BY P2 IN PLAN VIEW	6	4/12/01	C.E.	R. BURT	P. BLAKE	7/12/01

**JUNCTION PIT NOTES:**  
 TYPE P2 PIT TO BE USED FOR IMPACT ABSORBING ROAD LIGHTING POLE.  
 TYPE P4 PIT TO BE USED FOR TRAFFIC SIGNAL MAST ARMS AND COMBINATION TRAFFIC SIGNALS / IMPACT ABSORBING ROAD LIGHTING POLE.  
 REFER TO DPTI STANDARD DRAWINGS FOR PIT INSTALLATION



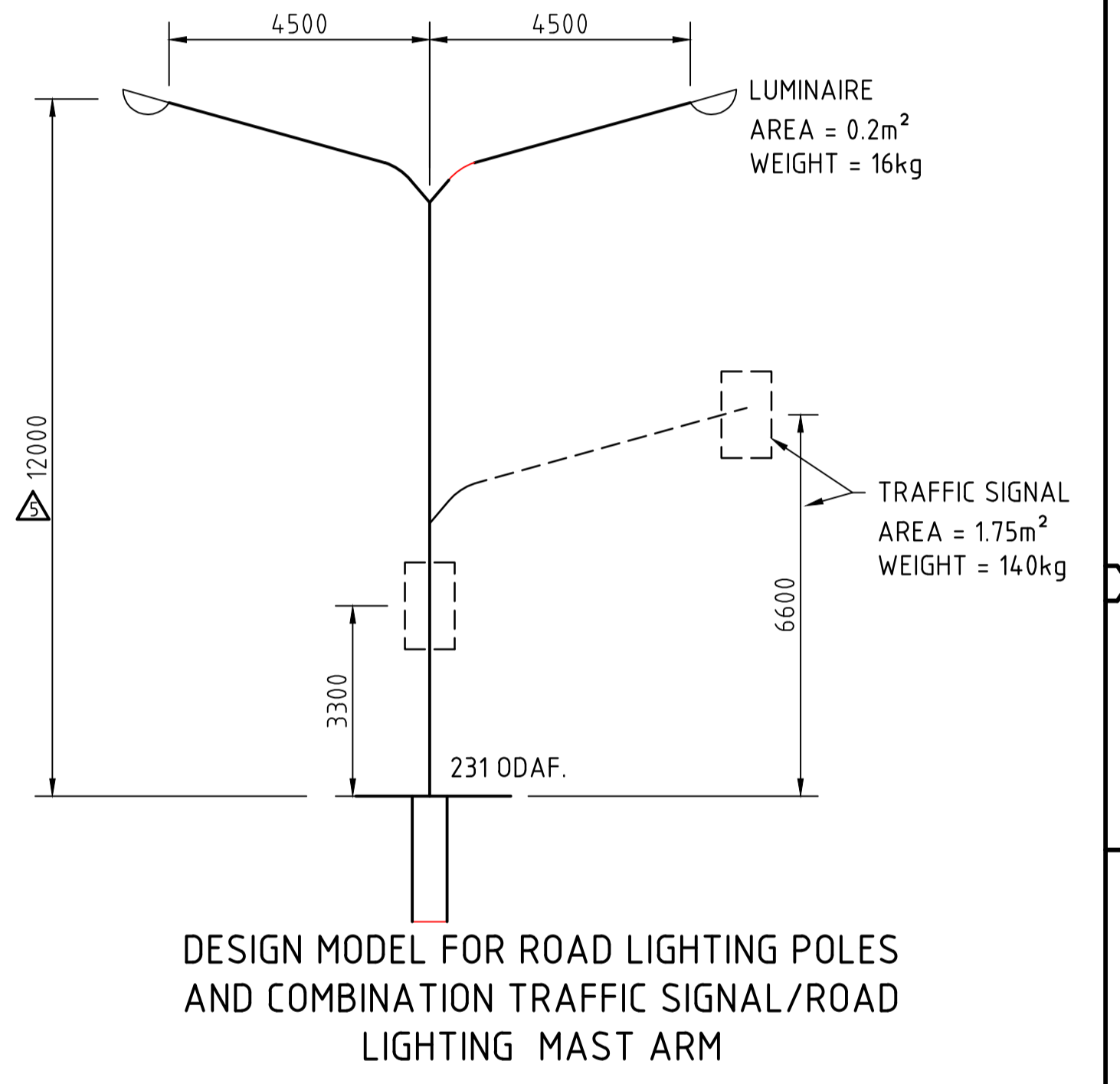
SECTION 1  
SCALE 1:10

**FOOTING FOR COMBINATION TRAFFIC SIGNAL ROAD LIGHTING MAST ARM POLES & MAST ARMS, AND FOR REPLACEMENT OF EXISTING ABOVE GROUND STANDARD & COMBINATION ROAD LIGHTING POLES.**



SECTION 2  
SCALE 1:10

BAR	DESCRIPTION	NO. REQD.	SHAPE CODE	BENDING
P1	RW6	1	SP	
P2	N16	9	S	
P3	N16	4	UT	
P4	N16	4	L	



DESIGN MODEL FOR ROAD LIGHTING POLES AND COMBINATION TRAFFIC SIGNAL/ROAD LIGHTING MAST ARM

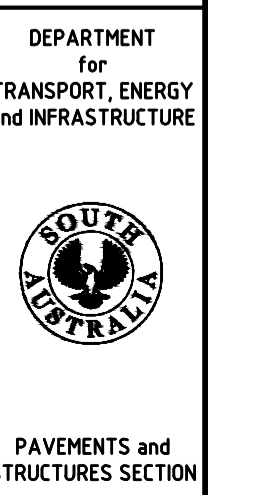
**NOTES**

**DESIGN**  
 1. THIS FOOTING IS SUITABLE FOR LIGHT POLES AND TRAFFIC SIGNAL MAST ARMS AS SHOWN ON DIAGRAM ABOVE.  
**MATERIALS**  
 1. CONCRETE TO BE GRADE N32.  
 2. MINIMUM COVER TO REINFORCEMENT TO BE 75mm UNLESS SHOWN OTHERWISE.  
 3. REINFORCEMENT BARS SHALL BE D500N AND D500L(RW) IN ACCORDANCE WITH AS/NZS 4671. STANDARD HOOKS AND BENDS IN ACCORDANCE WITH AS 3600.  
 4. THREADED ANCHOR RODS TO BE GRADE 8.8, NUTS AND WASHERS IN ACCORDANCE WITH AS 1252. ANCHOR RODS, NUTS AND WASHERS SHALL BE HOT DIP GALVANISED IN ACCORDANCE WITH AS 1214 (BOLTS AND NUTS), AND AS/NZS 4680 (WASHERS). ALL NUTS TO BE TAPPED OVERSIZE TO ACCOMMODATE GALVANISING.  
 5. PROJECTION OF THREADED RODS FROM THE TOP AND BOTTOM NUT FACE SHALL BE 6MM MINIMUM IN ACCORDANCE WITH AS4100  
**FOUNDATION**  
 1. FOOTINGS NOT TO BE INSTALLED IN LOOSE SAND OR FILL, SOFT CLAY, WET SOILS NEAR TO UNDERGROUND SERVICES OR ON SLOPES GREATER THAN 10 DEGREES. FOR SUCH LOCATIONS ADVICE TO BE SOUGHT FROM STRUCTURAL ENGINEER.  
**ELECTRICAL WIRING**  
 1. FOR DETAILS OF JUNCTION PIT AND POLE WIRING REFER TO STANDARD DRAWING S-4055, SHEET 46.

**SUPERSEDES DRAWING S-4055, SHEET 28 & 63**

DESIGN	ENDORSED
DESIGN UNIT	
DRAWN	
DESIGN UNIT	
CHECKED	APPROVED
R. L.	R. LEWTH
EXAMINED	for Executive Director
A. PIRESKOWSKI	Date: 24/06/19
Unit Head	CONSTRUCTED
ENDORSED	
D. WILFORD	
Manager, Structures Group	

STANDARD DRAWING	
ROAD LIGHTING / TRAFFIC SIGNALS	
COMBINATION T-S ROAD LIGHTING MAST ARMS & EXISTING IMPACT ABSORBING LIGHT POLES, BASE PLATE MOUNTED PILE FOOTING AND ANCHOR DETAILS	
AMEND 6	SHEET 30
DRG S - 4055	



100 MILLIMETRES ON ORIGINAL DRAWING

ALL DIMENSIONS ARE IN MILLIMETRES UNLESS SHOWN OTHERWISE

LIGHTING

PAVEMENTS and STRUCTURES SECTION