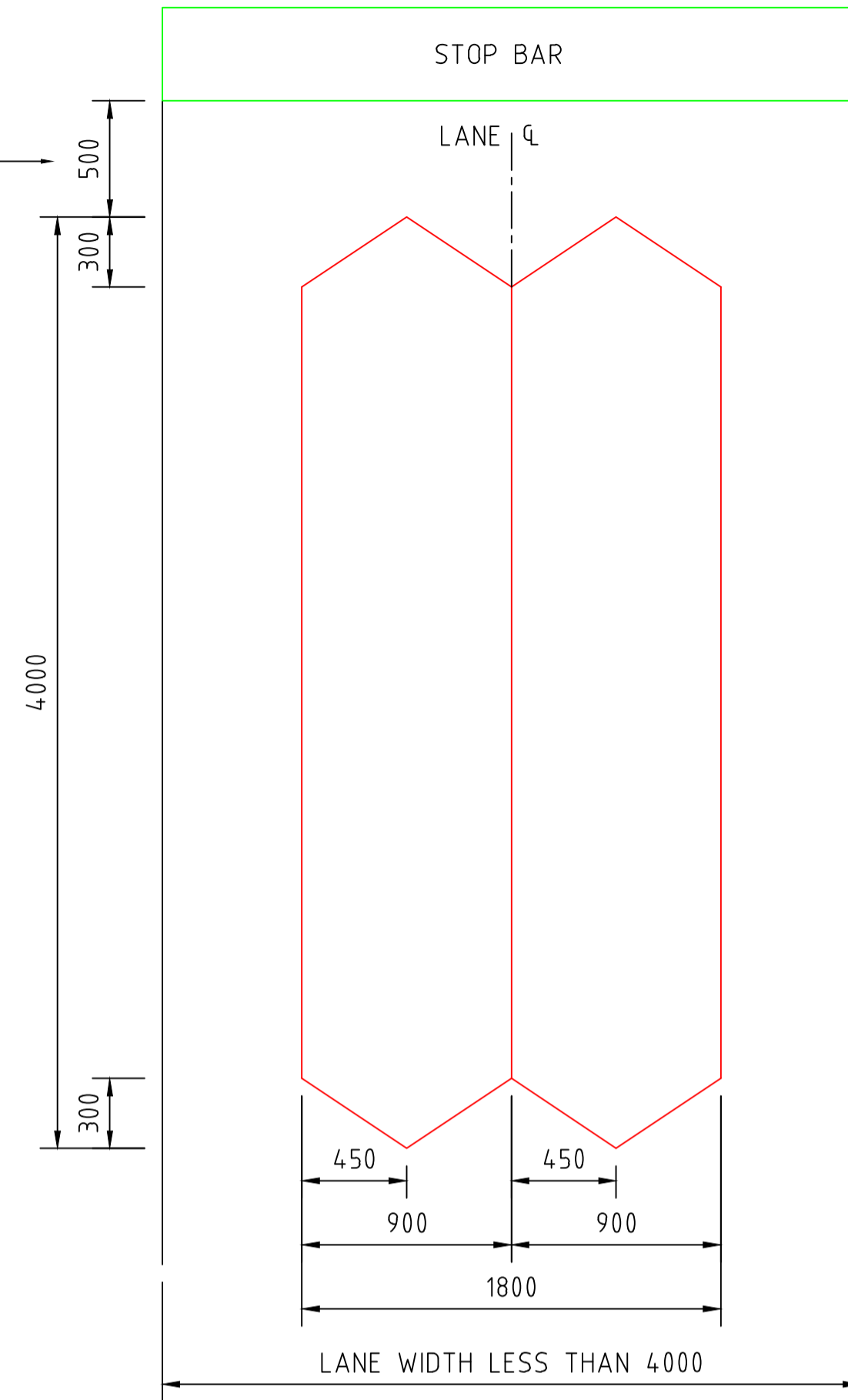
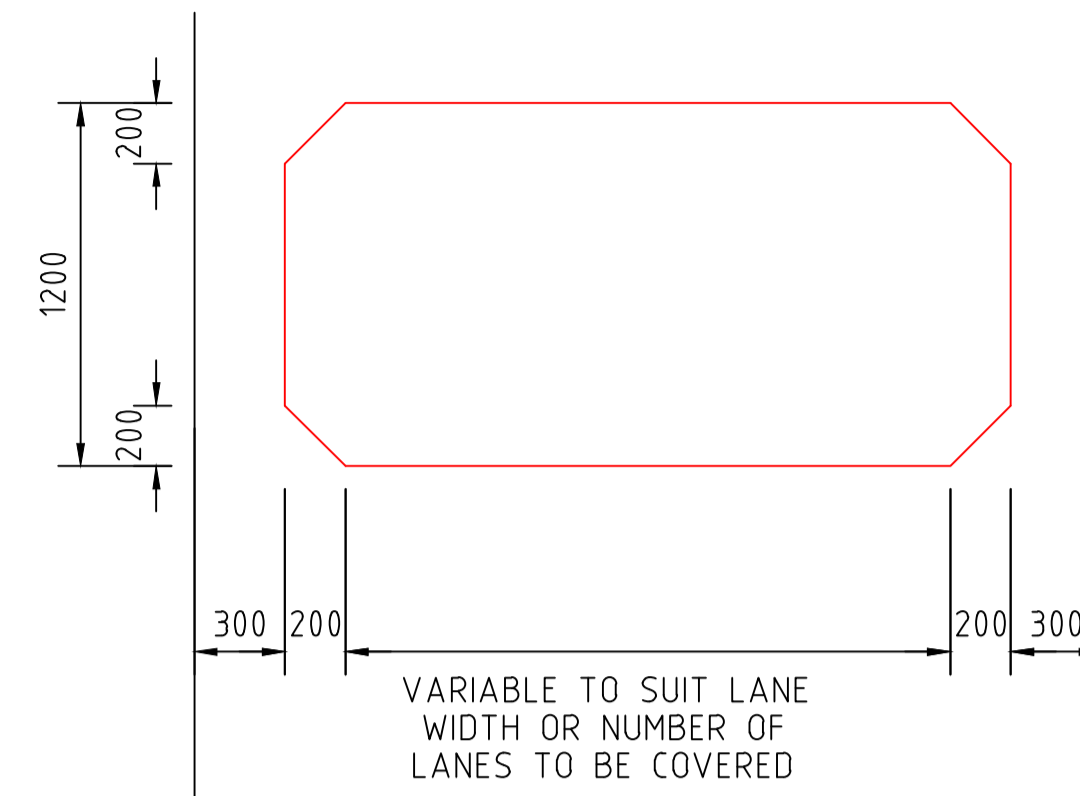


A - STANDARD QUADRUPOLE

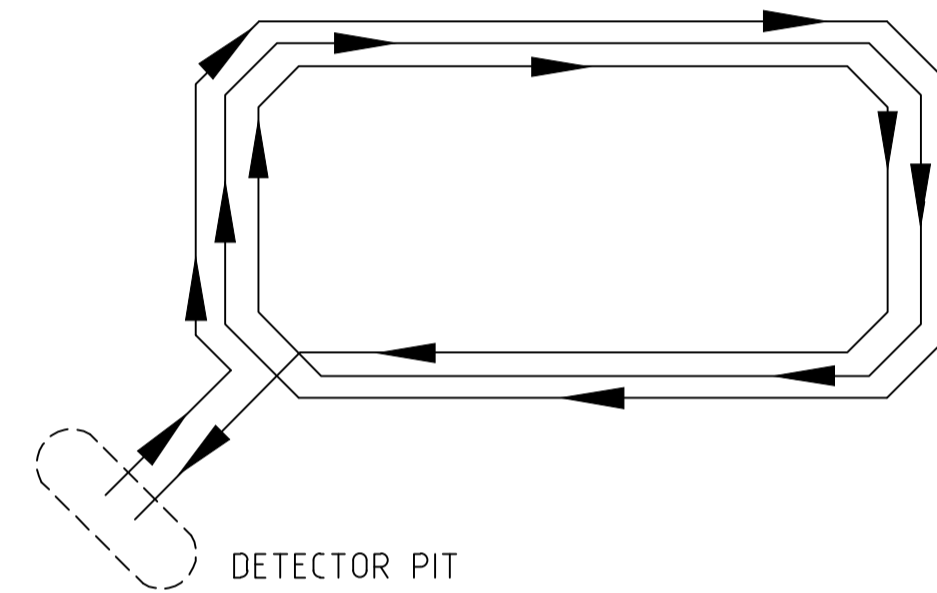
△ FOR 'BUS ONLY LANE' THIS DIMENSION IS TYPICALLY 6m



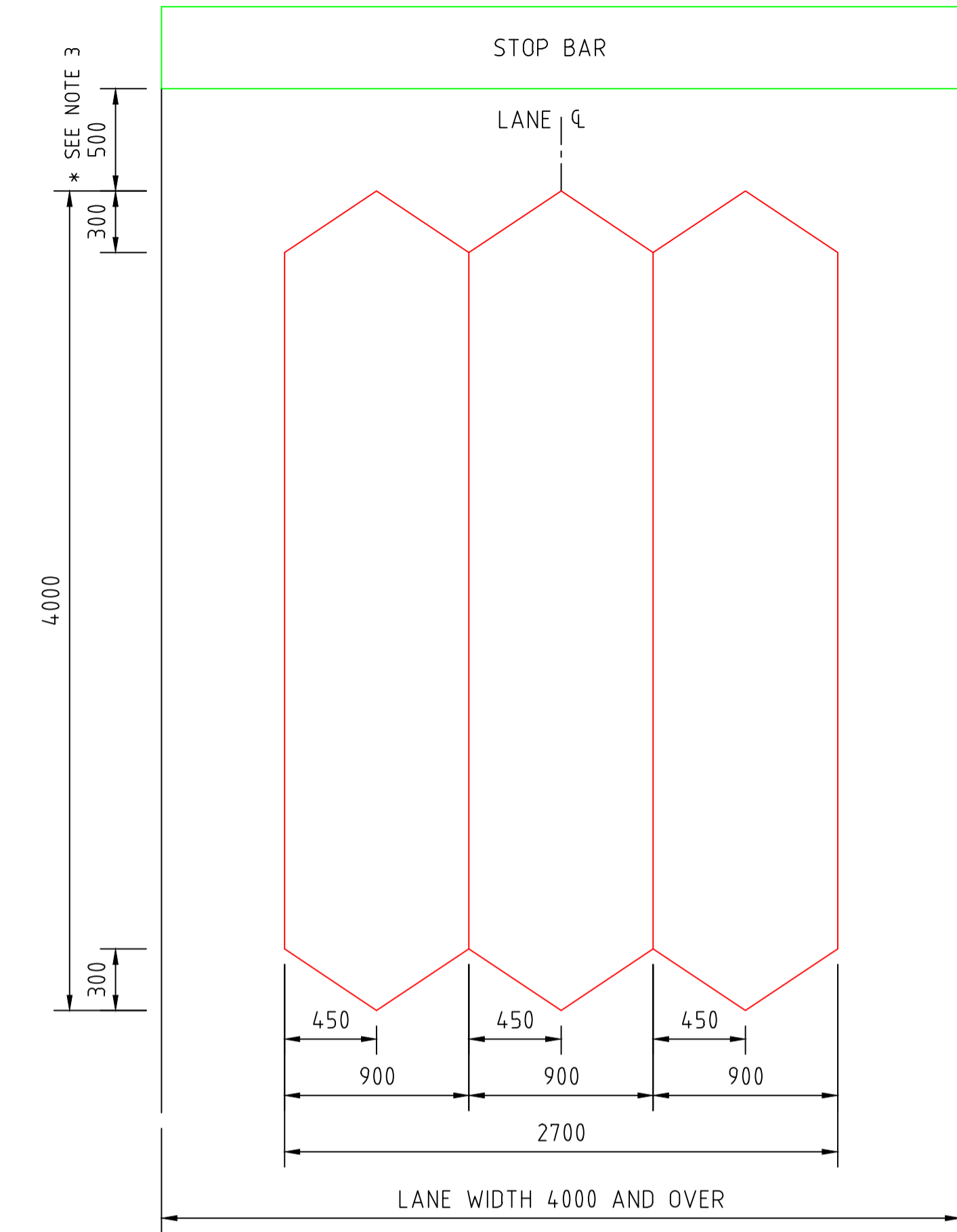
B - PASSAGE LOOP



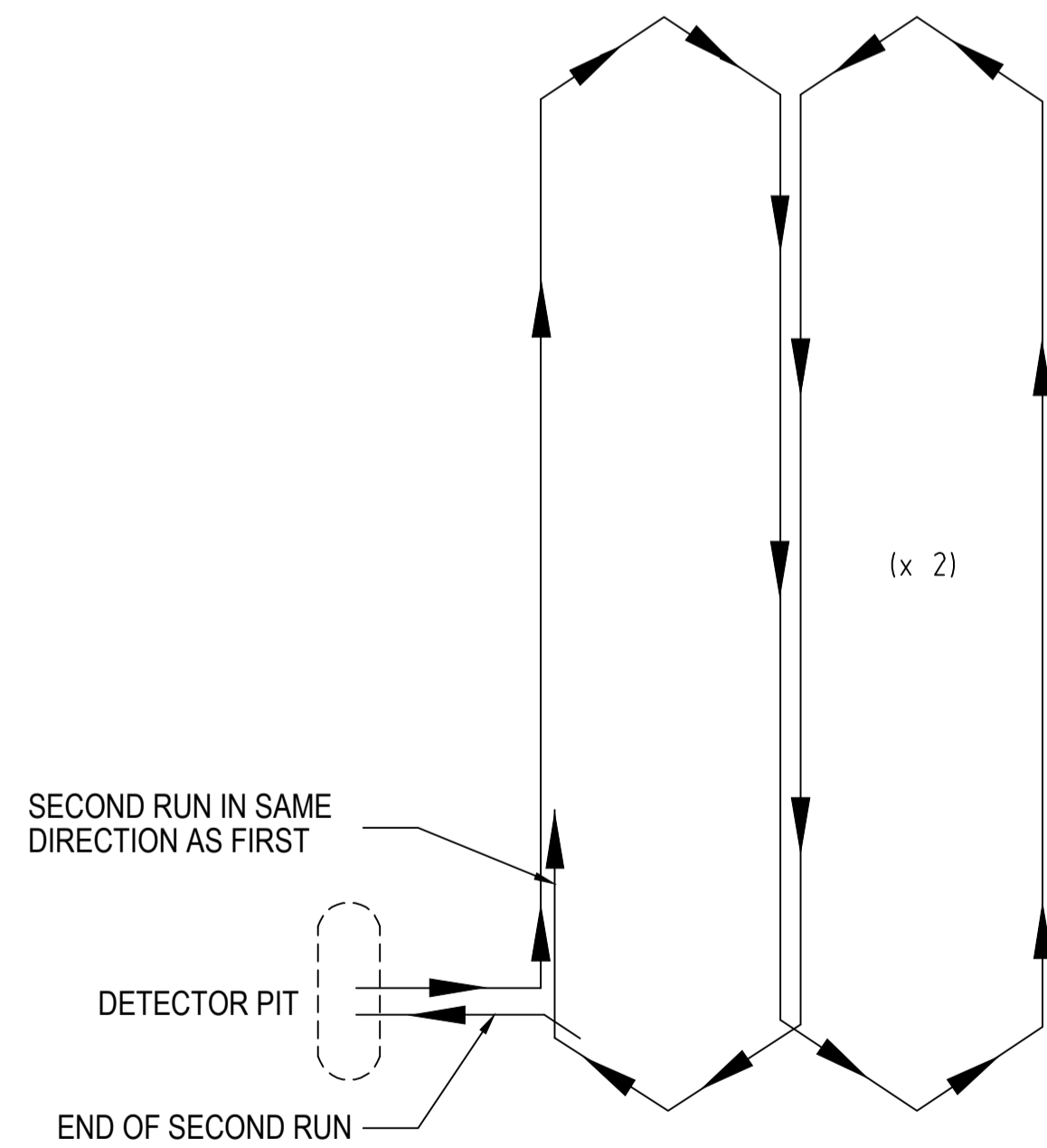
CABLE LAYOUT OF PASSAGE LOOPS



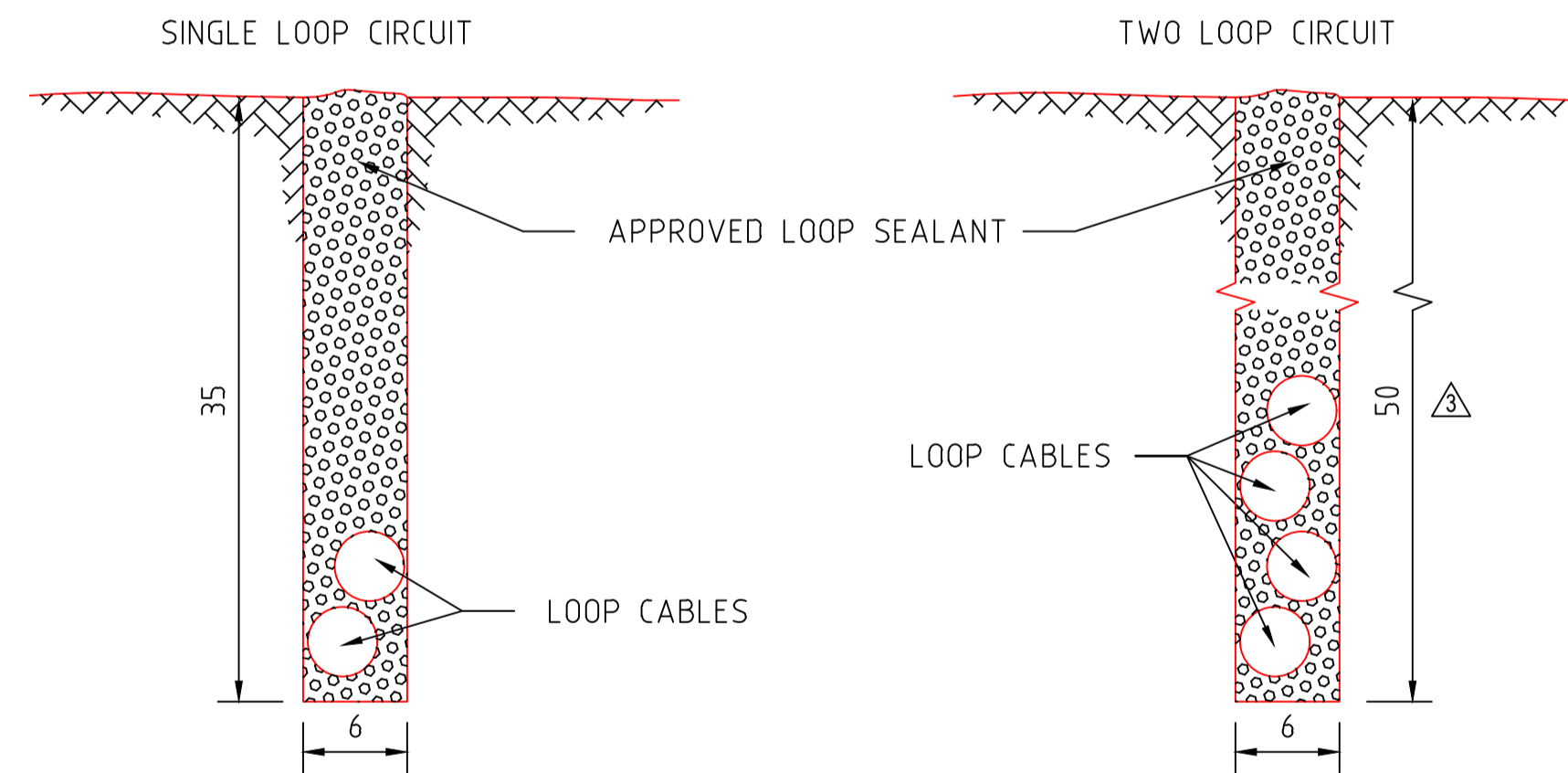
C - THREE SECTION QUADRUPOLE



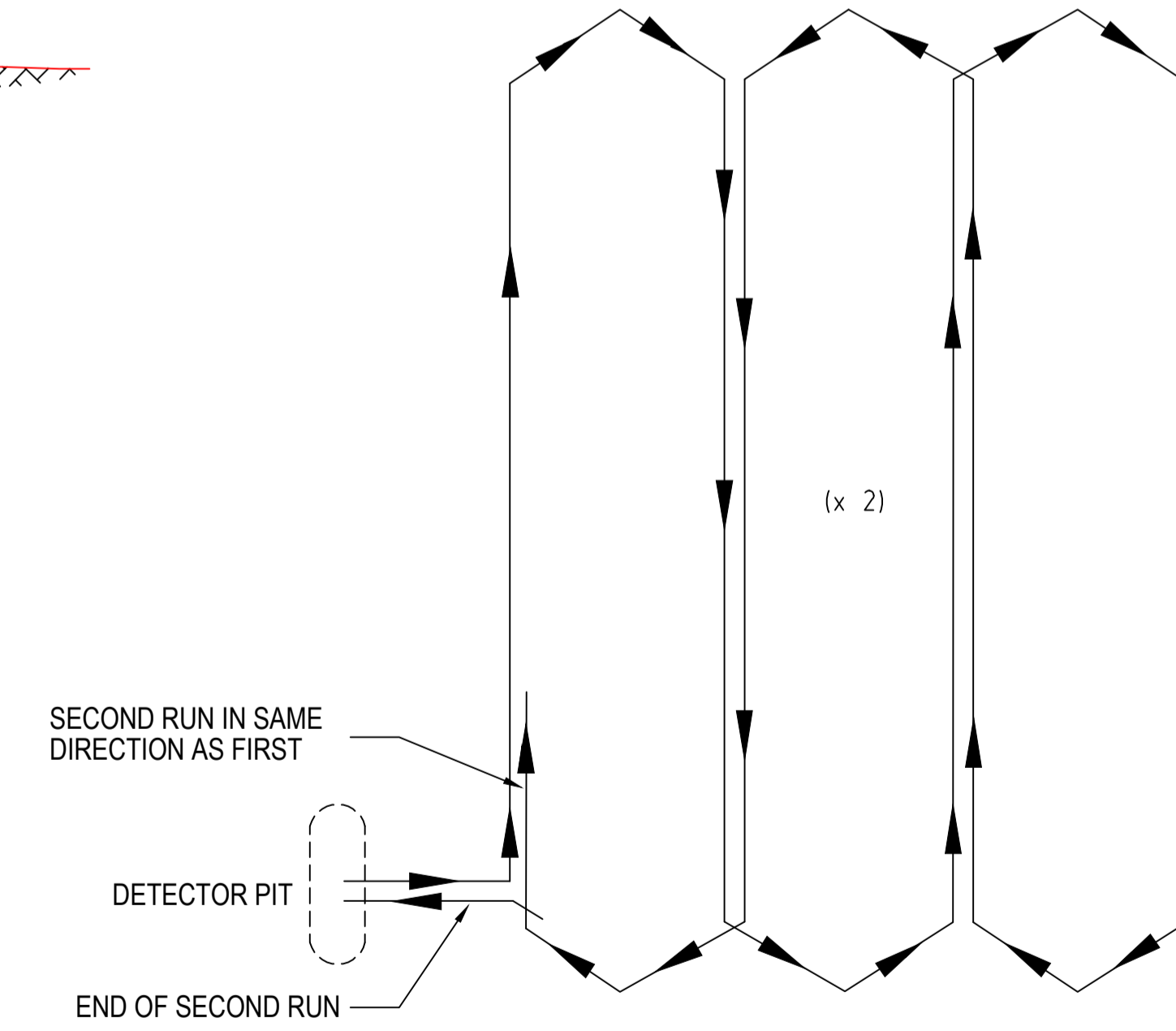
CABLE LAYOUT OF QUADRUPOLE LOOPS



ENLARGED VIEW OF CABLE SLOT



CABLE LAYOUT OF THREE QUADRUPOLE LOOPS



NOTES:

1. ALL LOOP CABLES SHALL BE IN ACCORDANCE WITH AS2276.3
2. ALL LOOP CABLES BENDING INTERNAL ANGLE SHALL BE GREATER THAN OR EQUAL TO 90°.
- △ 3. IN A BUS ONLY LANE, THE DETECTOR LOOP IS LOCATED (TYPICALLY) 6.0m BACK FROM STOP BAR.

SCALE 1 : 25

100 MILLIMETRES ON ORIGINAL DRAWING

FILE NAME : H:\PROJDATA\

INDEX/LOCALITY	GEOM. LAYOUT	SURFACE LEVELS	LONG. SECTION	CROSS SECTION	DRAINAGE	SERVICES	SURVEY MARKS	MED. IS. S/BS.	PIPE/T. MARKING	SIGNS	Lighting	T. CONTROL LAYOUT	T. CONTROL INST.	'SECTION. JUNC.	TRAFFIC SIGS	P.A.C./S. XING	DUCT LOCATION	TREE REMOVAL	VEG. SURVEY	LANDSCAPE
----------------	--------------	----------------	---------------	---------------	----------	----------	--------------	----------------	-----------------	-------	----------	-------------------	------------------	-----------------	--------------	----------------	---------------	--------------	-------------	-----------

CONSTRUCTED DATE	DESIGN R.C.C
	DRAWN T.J.C.
	CHECKED G.J.D.
	APPROVED C.B.
FOR EXECUTIVE DIRECTOR DATE 16/3/88	

TRANSPORT SA
STANDARD DRAWING
ROAD DESIGN STANDARD

DETECTOR LOOP LAYOUT

PROJECT START : PRP.	PROJECT END : PRP.		
PROJECT NO	SURVEY FILE	AMEND SHEET 01	DRG S-4500

4500_SHT1.dwg 12/9/2001

DESCRIPTION	NO.	DATE	RESP	AUTHORISED	TCD AMENDTS APPROVED FOR E.D.	TSA 27 DATE	TECH. DETAILS APPROVED FOR E.D.	CONSTRUCTED DATE
BUS LANE DETECTOR LOCATION ADDED.	△ 1	30.10.12	LM			15.2.18	Y XIAO	
DIMENSION ON CABLE SLOT ALTERED	△ 2	29.12.11	LM	K NOBLE	P BLAKE	12.4.12	P BLAKE	
REDRAWN TO AUTOCAD & DETAIL ADDED	2	9/01	MPL	BJM/RB	P BLAKE	7.12.01	P BLAKE	
PLAN AMMENDED	1	3/92	T.J.C.	G.W.	J.F.	12.3.92	D FITZIMMONS	

AMENDMENTS