

ROAD SAFETY IN THE YORKE AND MID-NORTH REGION

A report of road crashes in the Yorke and Mid-North Region 2014-2018

Road Trauma in South Australia

The annual number of road deaths and serious injuries is traditionally used as an indicator of road safety in South Australia. The South Australian Road Safety Strategy 2020 – *Towards Zero Together* has a target to reduce fatalities and serious injuries by at least 30% by 2020.

There were 80 fatalities recorded on South Australian roads in 2018. This is 20 fewer than the 100 fatalities recorded in 2017 and 19 fewer than the previous 5 year average (2013 – 2017) of 99 fatalities.

Serious injuries have decreased from 622 in 2017 to 576 in 2018, the lowest recorded total of serious injuries in a given year. The number is also 13% lower than the previous 5 year average (2013 – 2017) of 715 serious injuries per year.

Road Trauma in the Yorke and Mid-North Region

Each year on average 15 people are killed and 57 are seriously injured on roads in the Yorke and Mid-North region. Residents of the region represent 4% of the total population of South Australia and account for 14% of fatalities in South Australia and 8% of all serious injuries.

Table 1 shows the number and percentage of casualty crashes in 2014-2018 by district council.

Table 1 –Casualty crashes, Yorke and Mid-North Councils, South Australia, 2014-2018

Local Government Areas	Fatal Crashes	Serious crashes	Minor crashes	Total
Orroroo Carrieton (DC)	1 (2%)	4 (2%)	7 (1%)	12
Port Pirie (RC)	9 (17%)	20 (10%)	105 (16%)	134
Peterborough (DC)	0 (0%)	11 (6%)	18 (3%)	29
Northern Areas (DC)	2 (4%)	19 (10%)	47 (7%)	68
Goyder (DC)	7 (13%)	23 (12%)	40 (6%)	70
Mount Remarkable (DC)	4 (7%)	9 (5%)	38 (6%)	51
Copper Coast (DC)	2 (4%)	13 (7%)	98 (15%)	113
Barunga West (DC)	0 (0%)	12 (6%)	23 (3%)	35
Yorke Peninsula (DC)	9 (17%)	32 (16%)	91 (14%)	132
Wakefield (DC)	13 (24%)	36 (18%)	96 (14%)	145
Clare and Gilbert Valleys (DC)	7 (13%)	18 (9%)	100 (15%)	125
TOTAL	54	197	663	914

There was a total of 914 casualty crashes in the Yorke and Mid-North region in the 5 years 2014 – 2018.

Wakefield District Council recorded the highest number of casualty crashes in the region and also saw the most fatal crashes in the last 5 years.

Figure 1 and Table 2 shows the contribution of each council to the overall number of casualty crashes by year in the Yorke and Mid-North Region for the last 5 years.

Figure 1 – Number of casualty crashes, 2014-2018

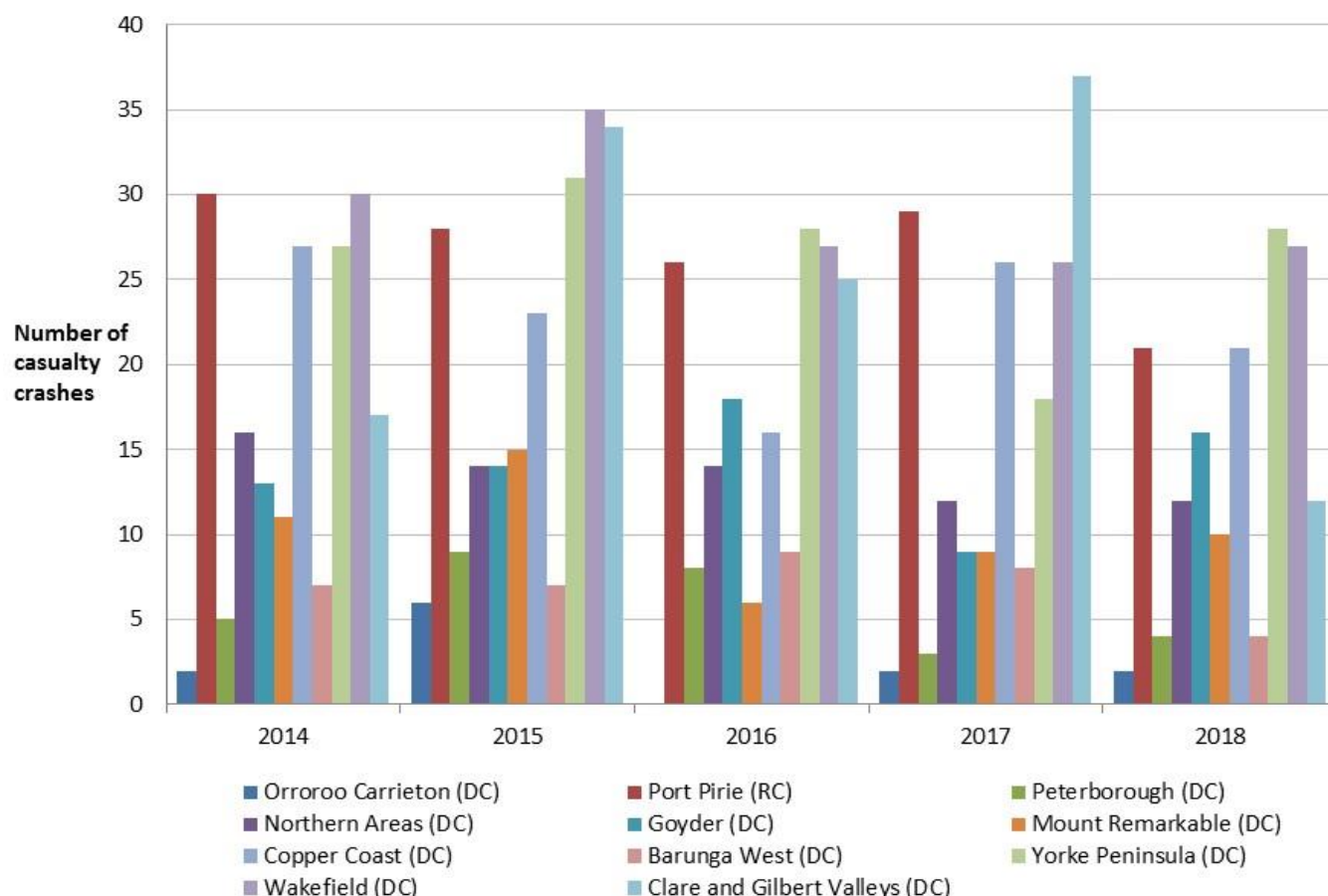


Table 2 – Number of casualty crashes, 2014-2018

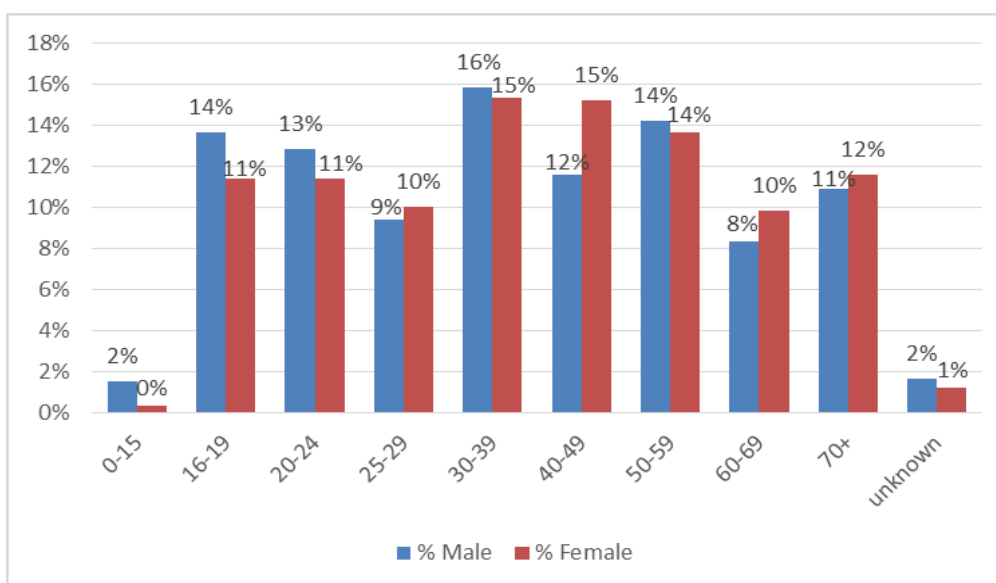
Local Government Areas	2014	2015	2016	2017	2018	Total
Orroroo Carrieton (DC)	2	6	0	2	2	12 (1%)
Port Pirie (RC)	30	28	26	29	21	134 (15%)
Peterborough (DC)	5	9	8	3	4	29 (3%)
Northern Areas (DC)	16	14	14	12	12	68 (7%)
Goyder (DC)	13	14	18	9	16	70 (8%)
Mount Remarkable (DC)	11	15	6	9	10	51 (6%)
Copper Coast (DC)	27	23	16	26	21	113 (12%)
Barunga West (DC)	7	7	9	8	4	35 (4%)
Yorke Peninsula (DC)	27	31	28	18	28	132 (14%)
Wakefield (DC)	30	35	27	26	27	145 (16%)
Clare and Gilbert Valleys (DC)	17	34	25	37	12	125 (14%)
TOTAL	185	216	177	179	157	914

Table 3 shows the contribution of each council to the overall number of casualties as opposed to crashes in the Yorke and Mid-North Region. There were 1,316 casualties as a result of the 914 casualty crashes in the Yorke and Mid-North region.

Table 3 - Number of casualties (fatalities, serious and minor injuries), 2014-2018

Local Government Areas	2014	2015	2016	2017	2018	Total
Orroroo Carrieton (DC)	2	7	0	2	4	15 (1%)
Port Pirie (RC)	38	44	44	37	23	186 (14%)
Peterborough (DC)	12	16	10	4	5	47 (4%)
Northern Areas (DC)	21	20	21	14	20	96 (7%)
Goyder (DC)	20	20	25	14	21	100 (8%)
Mount Remarkable (DC)	20	15	8	15	20	78 (6%)
Copper Coast (DC)	42	30	25	44	31	172 (13%)
Barunga West (DC)	10	7	18	8	5	48 (4%)
Yorke Peninsula (DC)	46	44	36	27	33	186 (14%)
Wakefield (DC)	41	55	35	51	44	226 (17%)
Clare and Gilbert Valleys (DC)	24	41	34	48	15	162 (12%)
TOTAL	276	299	256	264	221	1316

Figure 2 – Percentage of casualties by age and gender, 2014-2018



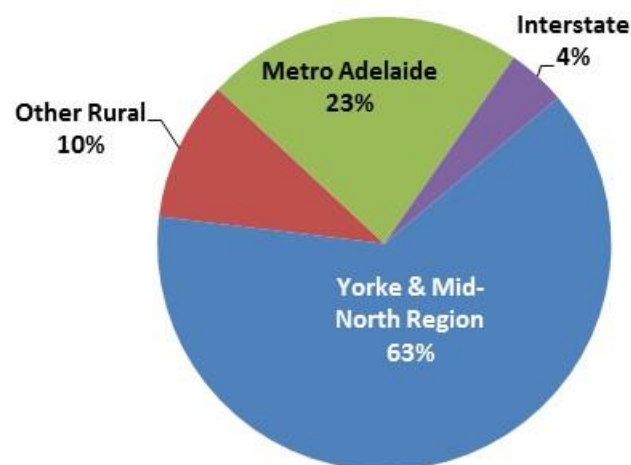
- There were a total of 1,316 casualties for the 5 year period 2014-2018.
- 56% of casualties were male and 44% were female.
- Casualty numbers were high in the younger age groups, 16-24 year olds representing the highest numbers.
- 26% of road user casualties in this region are 16-24 year olds.
- People aged 16 to 24 year old in this region make up 7% of the population, but accounted for 17% of all fatalities and 22% of all serious injuries for the years 2014-2018.

Table 4 – Casualties by age and type of casualty, 2014-2018

Road User	0-15	16-19	20-24	25-29	30-39	40-49	50-59	60-69	70+	Unknown	Total
Driver	0	92	103	71	118	101	119	74	103	9	790
Passenger	0	49	44	44	69	54	39	31	29	5	364
Motor cyclist (including pillion)	3	20	11	6	14	16	23	9	7	2	111
Cyclist	5	3	1	2	3	1	1	4	2	1	23
Pedestrian	5	2	3	4	4	1	1	0	6	2	28
Total	13	166	162	127	208	173	183	118	147	19	1316

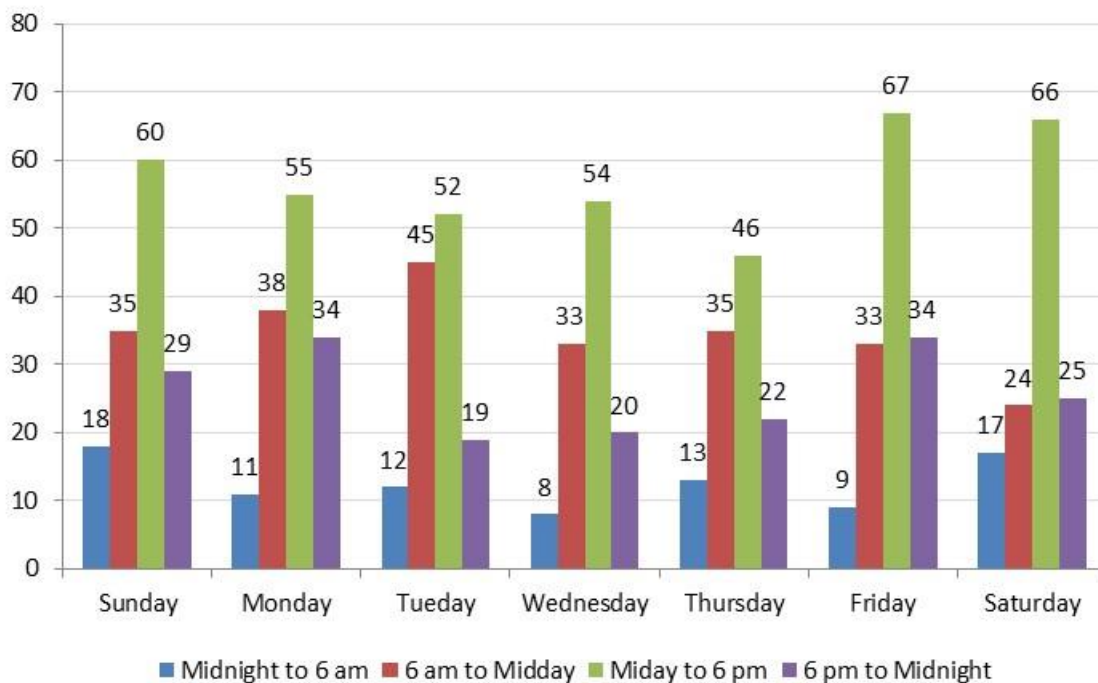
- Like most areas, drivers and passengers (vehicle occupants) make up the majority of road user casualties in the Yorke and Mid-North region.
- 46 (5%) of the vehicle occupant casualties were not wearing a seatbelt at the time of the crash.

Figure 3 – Residence of driver and rider casualties, 2014-2018



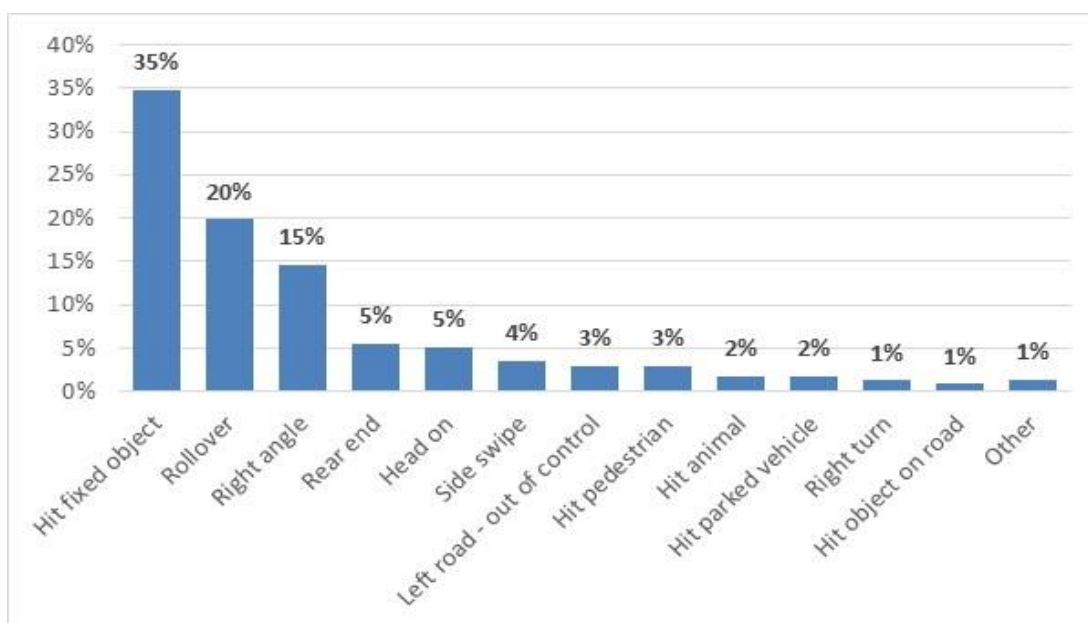
- 63% of driver and rider casualties that occur in the Yorke and Mid-North region are residents of the region.
- 10% are from other rural areas in South Australia.
- 23% are residents in the Adelaide Metropolitan area.
- 4% are from interstate.

Figure 4 – Casualty crashes by time of day/day of week, 2014-2018



- While crashes can occur at any time, the most common time for a casualty crash to occur in the Yorke and Mid-North Region is midday to 6 pm.

Figure 5 – Casualty crashes by crash type, 2014-2018



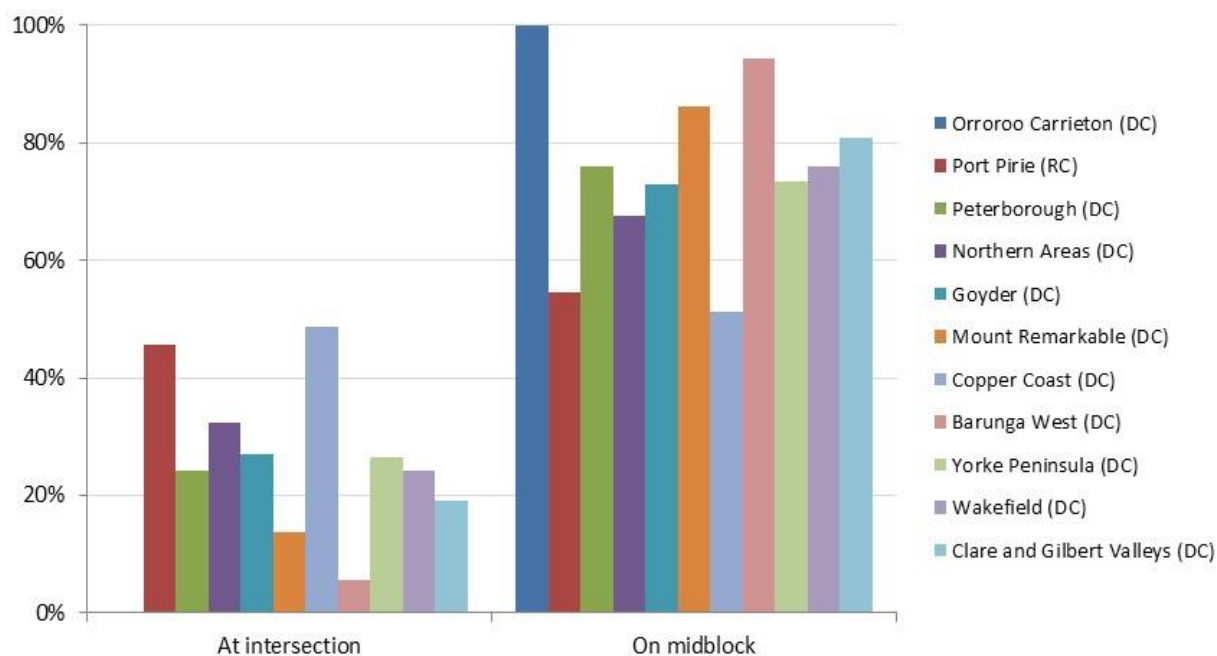
- The majority of casualty crashes are the result of a vehicle hitting a fixed object or a rollover.

Figure 6 – Casualty crashes by speed limit of road, 2014-2018



- 91% of all casualty crashes in the Yorke and Mid-North region occur on roads where speed limit is ≥ 100 km/h.
- 54% of the fatal crashes occurred on roads posted at 100 km/h and 35% on 110 km/h roads.

Figure 7 – Where the casualty crashes occurred within the councils of the Yorke and Mid-North Region, 2014-2018



- 29% of all casualty crashes in the Yorke and Mid-North region occur at intersections, while the remaining 71% occur at 'midblock' sections where there are no intersecting roads.
- The highest percentage of crashes occurring at 'midblock' sections was 100% in Orroroo/ Carrieton, followed by 86% in Mount Remarkable. The highest percentage of crashes occurring at intersections is in the Copper Coast (49%), followed by Port Pirie (46%).

Definitions for crash and casualty types:

Casualty Crash - A crash where at least one fatality, serious injury or minor injury occurs.

Casualty – A fatality, serious injury or minor injury.

Fatal Crash - A crash for which there is at least one fatality.

Fatality - A person who dies within 30 days of a crash as a result of injuries sustained in that crash.

Serious Injury Crash - A non-fatal crash in which at least one person is seriously injured.

Serious Injury - A person who sustains injuries and is admitted to hospital for a duration of at least 24 hours as a result of a road crash and who does not die as a result of those injuries within 30 days of the crash.

Minor Injury Crash - A crash for at least one person sustains injury but no person is admitted to hospital or dies within 30 days of the crash.

Minor Injury – A person who sustains injuries requiring medical treatment, either by a doctor or in a hospital, as a result of a road crash and who does not die as a result of those injuries with 30 days of the crash.