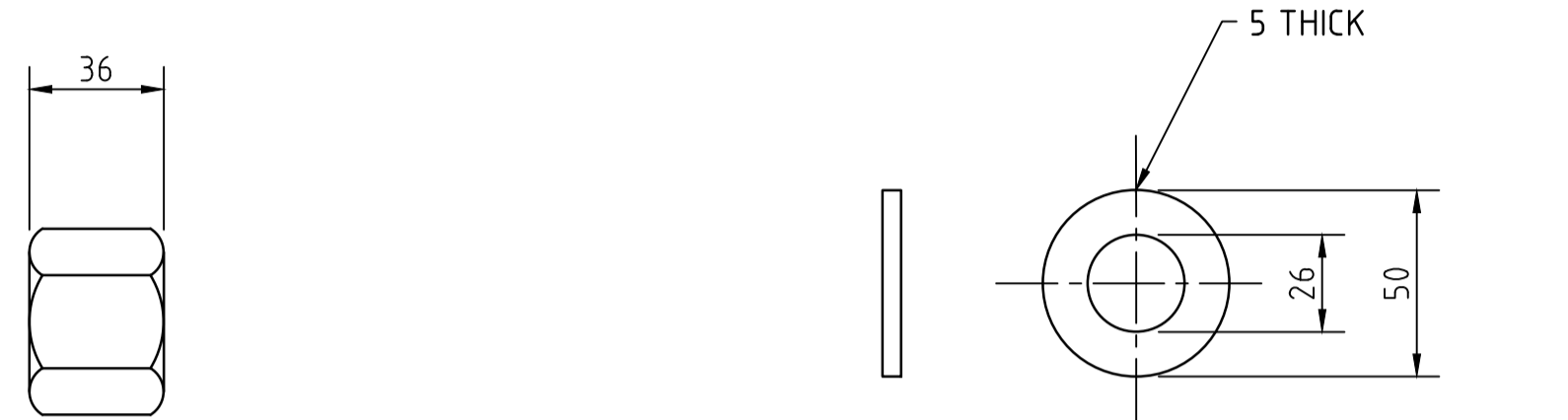


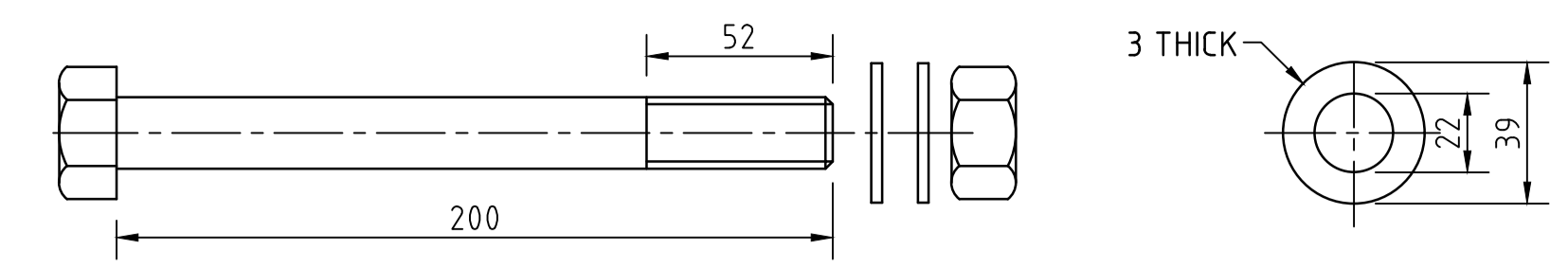
CABLE ASSEMBLY (FC01)
FOR MELT AND TRAILING TERMINAL
SCALE 1:5



M24 NUT (FN05)
FOR CABLE ASSEMBLY

24 GALV. ROUND WASHER (FW05)

CABLE ASSEMBLY FASTENERS
SCALE 1:2



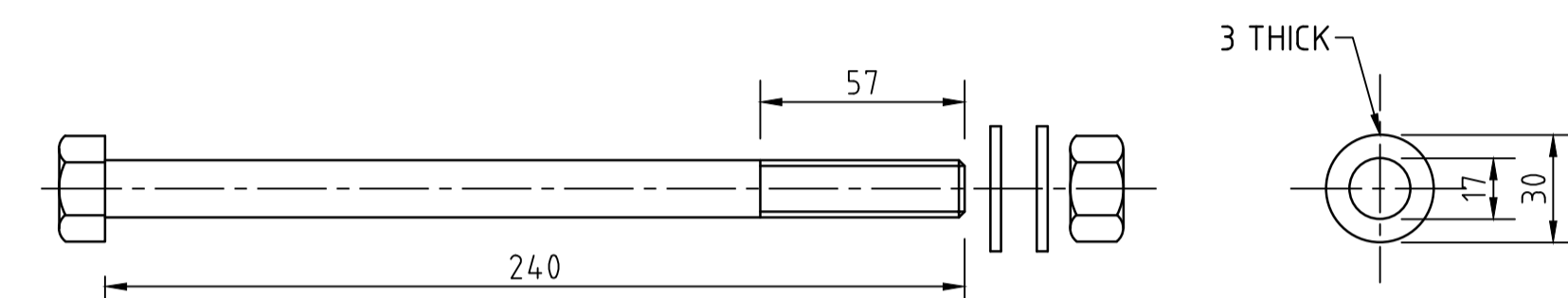
**M20x200 BOLT (FB08),
WASHERS (FW01) AND NUT (FN04)**
SOIL PLATE CONNECTION TO STEEL POSTS/TUBES - MELT

20 GALV. ROUND WASHER (FW01)



**M16x30 BOLT (FB02)
& NUT (FN01)**
BLOCKOUT CONNECTION TO C-POSTS

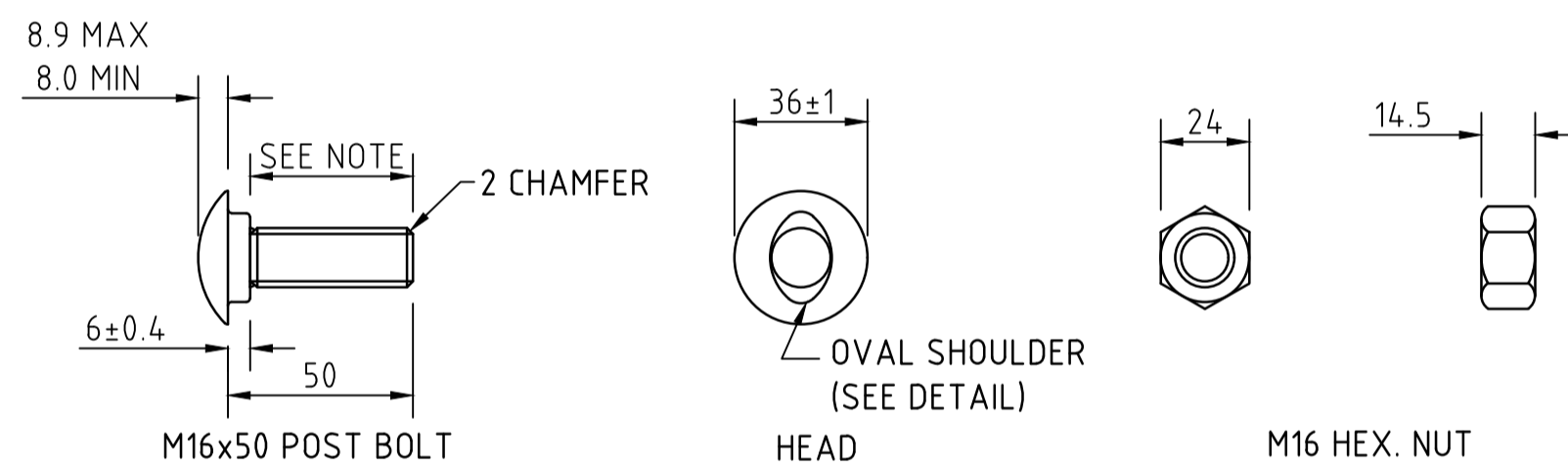
**M20x40 BOLT (FB09)
& NUT (FN04)**
SOIL PLATE CONNECTION TO C-POSTS - IN TRAILING TERMINALS



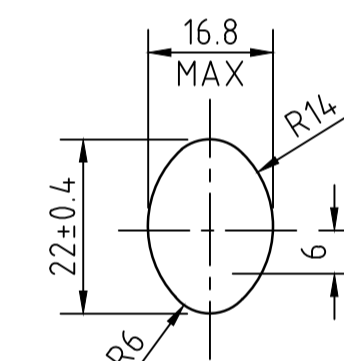
**M16x240 BOLT (FB06),
WASHERS (FW04) AND NUT (FN04)**
STRUT AND YOKE CONNECTION TO STEEL POSTS/TUBES - MELT

16 GALV. ROUND WASHER (FW04)

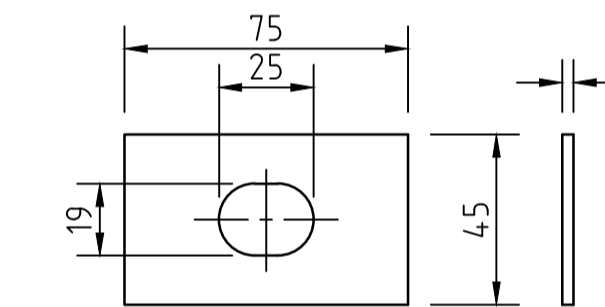
**FASTENER COMPONENTS FOR POSTS
- HEXAGON HEAD BOLTS, NUTS AND WASHERS**
SCALE 1:2



MUSHROOM HEAD POST BOLT (FB01) & NUT (FN01)
RAIL CONNECTION TO: BLOCKOUT, POST #1 IN MELT & END POST IN TRAILING TERMINAL

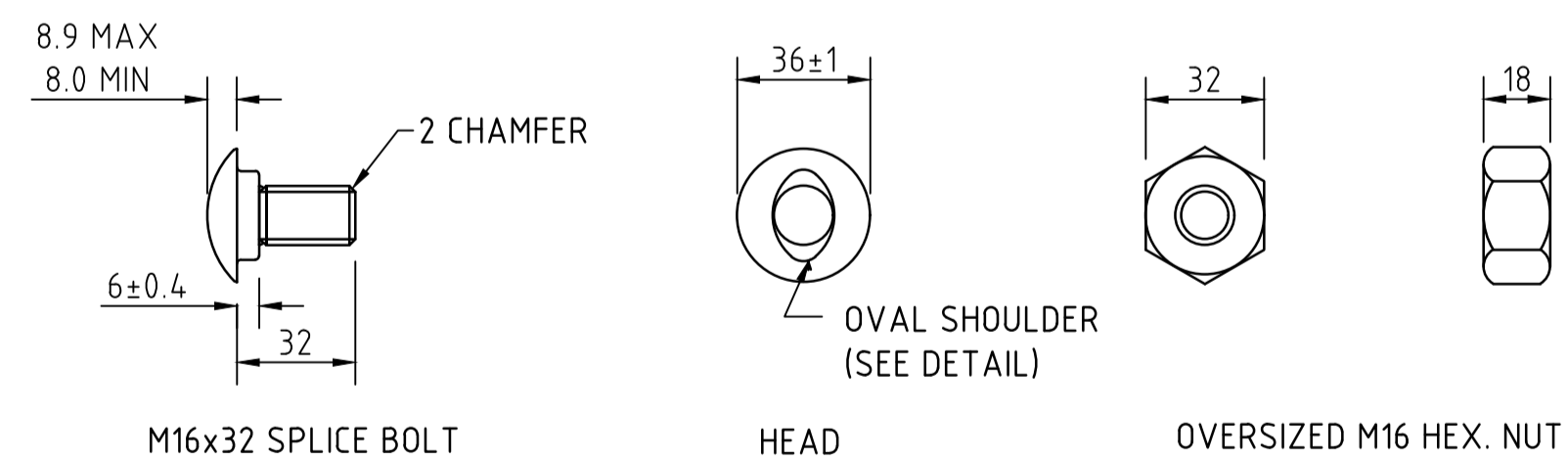


DETAIL OF BOLT SHOULDER
SCALE 1:1



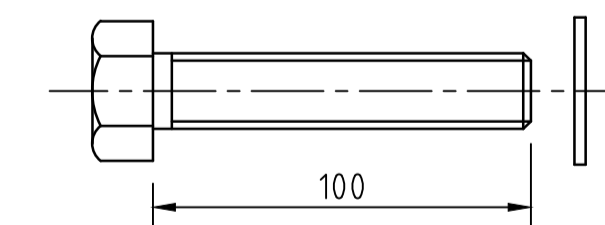
NOTE:
WASHER (FW03) TO BE USED ONLY IN CONNECTION OF RAIL TO FIRST POST OF TERMINALS, NOT ON MID SPAN LENGTHS OF RAIL.

RECTANGULAR WASHER (FW03)
SCALE 1:2



MUSHROOM HEAD SPLICE BOLT (FB03) AND OVERSIZED NUT (FN02)
RAIL CONNECTION: TO RAIL, ANCHOR BRACKET AND BUFFERED END
SHELF ANGLE CONNECTION: TO STEEL BLOCKOUT

M16 MUSHROOM HEAD BOLTS AND NUTS
SCALE 1:2



**M20x100 HEXAGON HEAD SCREW (FB11)
& WASHER (FW01)**
FOR BASE PLATE (PP01) CONNECTION TO CONCRETE SURFACE

**POST BASE PLATE HEXAGON
HEAD SCREW**
SCALE 1:2

NOTES:	
GENERAL	
1. POST BOLTS FB01 TO HAVE PHYSICAL PROPERTIES IN ACCORDANCE WITH AS/NZS 1111 (GRADE 4.6). HEXAGON NUT FN01 TO AS 1112.1. SPLICE BOLT FB03 AND NUT FN02 TO HAVE PHYSICAL PROPERTIES IN ACCORDANCE WITH AS/NZS 1252 (CLASS 8.8). NUTS SHALL BE TAPPED TO SUIT GALVANISED THREADS. THE LENGTH OF THREAD ON MUSHROOM HEADED BOLTS FB01 & FB03 TO BE SUCH THAT THE NUT SHALL TOUCH THE OVAL SHOULDER WHEN TIGHTENED BY HAND.	
2. HEXAGON BOLTS AND SCREWS TO AS/NZS 1111 (GRADE 4.6).	
3. HEXAGON NUTS TO AS 1112 (GRADE 5). NUTS SHALL BE TAPPED TO SUIT GALVANISED THREADS.	
4. STEEL WASHERS, LARGE SERIES TO AS 1237.	
5. ALL BOLTS, NUTS, SCREWS AND WASHERS TO BE TREATED TO AS 1627 AND SHALL BE HOT DIP GALVANISED IN ACCORDANCE WITH THE REQUIREMENTS OF AS 1214.	
6. CABLE ASSEMBLY:	
6.1 CABLE TO BE MINIMUM 20 DIA. 6X19 OR 6X25 WIRE STRAND CORE OR INDEPENDANT WIRE ROPE CORE, GALVANISED, RIGHT REGULAR LAY TO AS 3569.	
6.2 CABLE SHALL BE SUPPLIED WITH TWO 36 THICK M24 GALVANISED STEEL NUTS AND TWO 5 THICK GALVANISED STEEL WASHERS.	
7. TIGHTENING OF NUTS: NUT FN05 TO CABLE ASSEMBLY TO BE TIGHTENED SO THAT THERE IS NO SLACK IN THE CABLE. ALL OTHER NUTS SHALL BE SNUG TIGHT TO AS 4100.	
8. DIMENSIONS ARE SUBJECT TO MANUFACTURER'S TOLERANCES EXCEPT WHERE ALLOWABLE TOLERANCES ARE NOMINATED.	

DESCRIPTION	No.	Date	Resp	Authorised	Approved for Exec Director	Date
M16 NUT & NOTE 1 UPDATED IDENTIFIER ADDED	21/9/17	4/8/05	SA	P. MOLLOY	P. MOLLOY	10/10/17
SUPERSEDE NOTE ADDED	27/6/05	27/6/05	AP	P D WILSON	G W CHAPLIN	4/8/05

△ SUPERSEDES DRG S-4050 SHEETS 29-35

100 MILLIMETRES ON ORIGINAL DRAWING

ALL DIMENSIONS ARE IN MILLIMETRES UNLESS SHOWN OTHERWISE

TRAFFIC BARRIERS

DESIGN A PYRZAKOWSKI	ENDORSED R RICHARDSON for MANAGER PROJECTS
DRAWN DESIGN UNIT	
CHECKED A PYRZAKOWSKI	APPROVED G W CHAPLIN for Executive Director Date: 06-08-2004
EXAMINED A E HOBBS Unit Head	CONSTRUCTED
ENDORSED G W CHAPLIN for Manager, Structural and Geotech.	TITLE: Date:

STANDARD DRAWING
STEEL BEAM GUARDFENCE

BOLTS, NUTS, SCREWS, WASHERS & CABLE ASSEMBLY

AMEND 3 SHEET 47 DRG S - 4050



GD 211