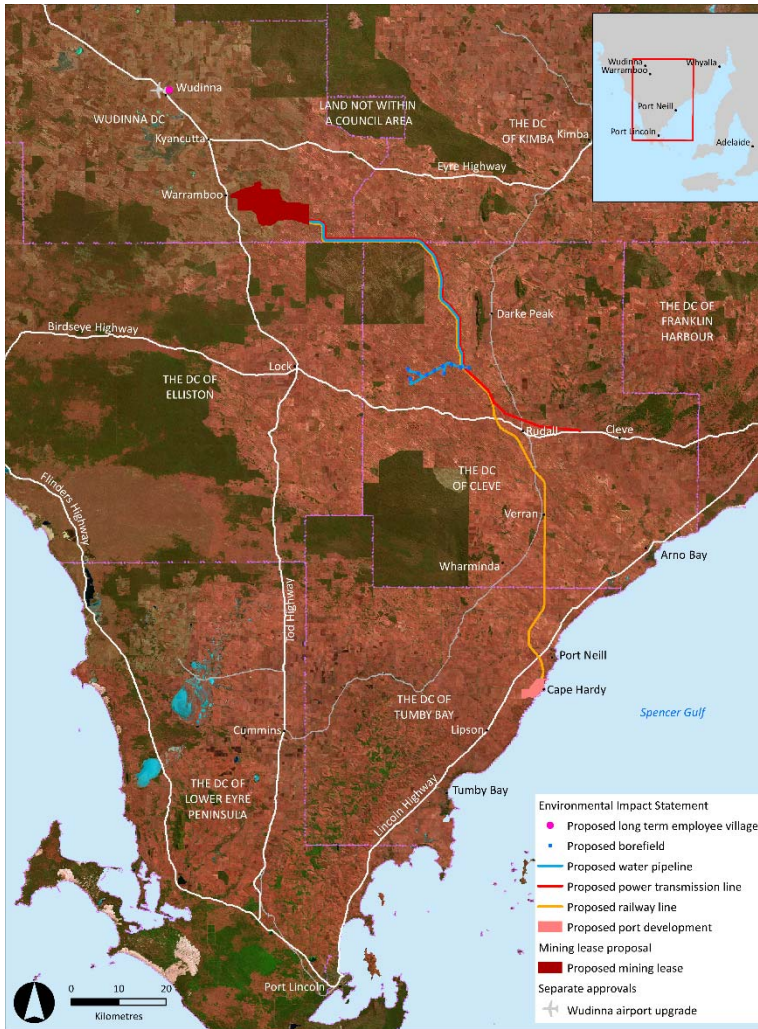




Central Eyre Iron Project

Cape Hardy and Wudinna (Iron Road)

SA MAJOR DEVELOPMENTS



Stage 3	APPROVED BY GOVERNOR
Applicant	Iron Road Limited
Use	Port development, rail corridor and worker village
Value	\$1 billion
Region	Eyre and Western

The Iron Road Project was declared as a Major Development in **August 2013**. The development consists of a multi billion dollar deep sea port at Cape Hardy, 150 kilometres of rail line to service an iron ore mine near Wudinna on the Eyre Peninsula.

The Governor gave development authorization on 3 May 2017.

[Read more about the Cape Hardy Deep-Sea Port on sa.gov.au](http://sa.gov.au)

